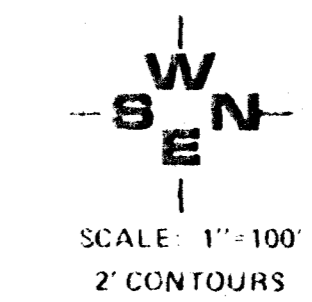
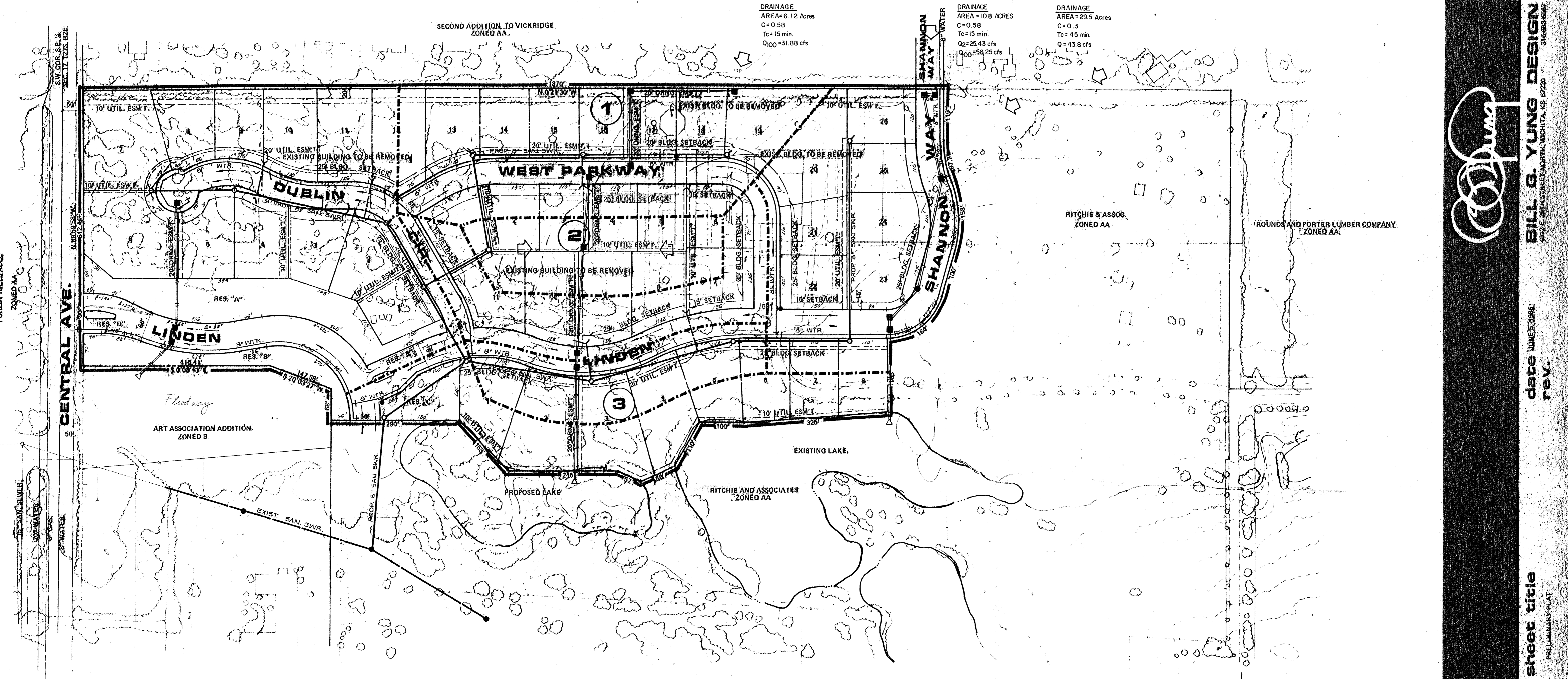


DRAINAGE
 AREA = 6.12 Acres
 C = 0.58
 Tc = 15 min.
 Q100 = 31.88 cfs

DRAINAGE
 AREA = 10.8 ACRES
 C = 0.58
 Tc = 15 min.
 Q2 = 25.43 cfs
 Q100 = 56.25 cfs

DRAINAGE
 AREA = 29.5 Acres
 C = 0.3
 Tc = 45 min.
 Q = 43.8 cfs



NOTES:
 RESERVES "A", "B" AND "C" FOR DRAINAGE, UTILITIES, LANDSCAPING,
 WALKS, OPEN SPACE AND ENTRY MONUMENTS.
 RESERVES "D" AND "E" ARE FOR DRAINAGE, UTILITIES, LANDSCAPING
 AND IRRIGATION.

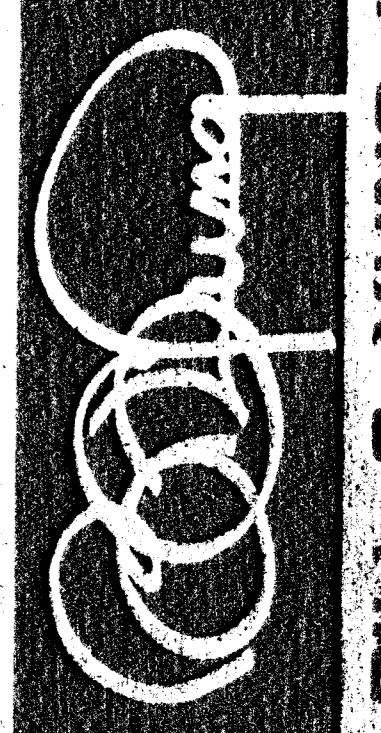
TOPOGRAPHY IS FROM AERIAL PHOTOGRAPHY TAKEN JUNE 1985.
 A DRAINAGE CONCEPT PLAN IS TO BE PREPARED BY M.K.E.C. AND
 SUBMITTED TO CITY ENGINEER.

MIN. PAD ELEV. FOR LOTS 1 - 8, BLOCK 3, WILL BE ESTABLISHED
 UPON COMPLETION OF THE LAKE DESIGN AND HYDROLOGY STUDY.

DRAINAGE & UTILITY CONCEPT

WOODLAND ESTATES

OWNER: RITCHIE AND ASSOCIATES, 3100 22ND ST. NO. SUITE 1400 WICHITA, KANSAS 67226



BILL G. YUNG DESIGN
 4912 S. 28TH STREET, NORTH WICHITA, KS 67220
 316-663-5565

date: JUNE 5, 1985
 rev.

sheet title
 PRELIMINARY PLAN

project