

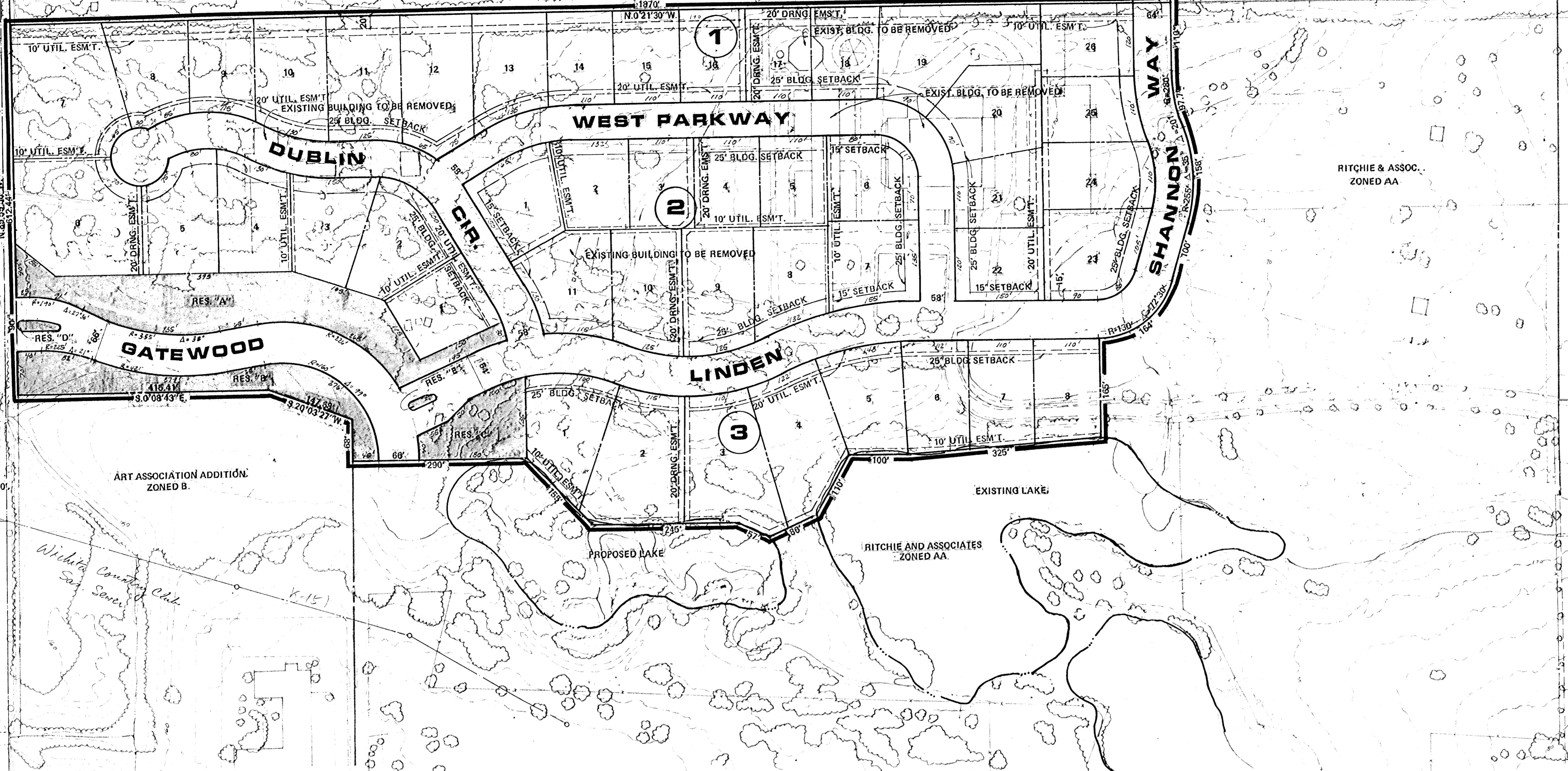
FOREST HILLS ADD.
ZONED AA

CENTRAL AVE.

SW COR. SE. 1/4
SEC. 17, T28N, R2E

SECOND ADDITION TO VICKRIDGE
ZONED AA.

SHANNON WAY

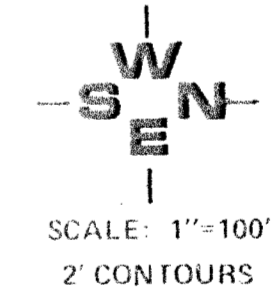


RITCHIE & ASSOC.
ZONED AA

ROUNDS AND PORTER LUMBER COMPANY
ZONED AA

ART ASSOCIATION ADDITION
ZONED B.

RITCHIE AND ASSOCIATES
ZONED AA



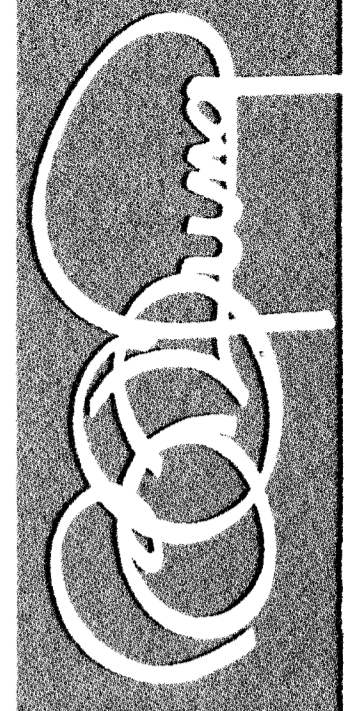
NOTES:
 RESERVES "A", "B" AND "C" FOR DRAINAGE, UTILITIES, LANDSCAPING, WALKS, OPEN SPACE AND ENTRY MONUMENTS.
 RESERVES "D" AND "E" ARE FOR DRAINAGE, UTILITIES, LANDSCAPING AND IRRIGATION.

TOPOGRAPHY IS FROM AERIAL PHOTOGRAPHY TAKEN JUNE 1985.
 A DRAINAGE CONCEPT PLAN IS TO BE PREPARED BY M.K.E.C. AND SUBMITTED TO CITY ENGINEER.

PRELIMINARY PLAT

WOODLAND ESTATES

OWNER: RITCHIE AND ASSOCIATES, 8100 22ND ST. NO. SUITE 1400 WICHITA, KANSAS 67226



BILL G. YUNG DESIGN
 4512 E. 25TH STREET NORTH, WICHITA, KS 67220
 316-663-5567

date JUNE 5, 1986:
 rev.

sheet title
 PRELIMINARY PLAT

project

sheet
 of