

SECOND ADDITION TO VICKRIDGE
ZONED AA.

DRAINAGE
AREA = 6.12 ACRES
C = 0.58
Tc = 15 min.
Q100 = 31.88 cfs

DRAINAGE
AREA = 10.8 ACRES
C = 0.58
Tc = 15 min.
Q2 = 25.43 cfs
Q100 = 54.25 cfs

DRAINAGE
AREA = 29.5 ACRES
C = 0.3
Tc = 45 min.
Q = 43.8 cfs

8" FIRE SERVICE & 2" DOMESTIC SERVICE
IS PRESENTLY CONNECTED TO THE END OF
THE 8" MAIN IN SHANNON WAY (VICKRIDGE)

RITCHIE ASSOCIATES
ZONED AA

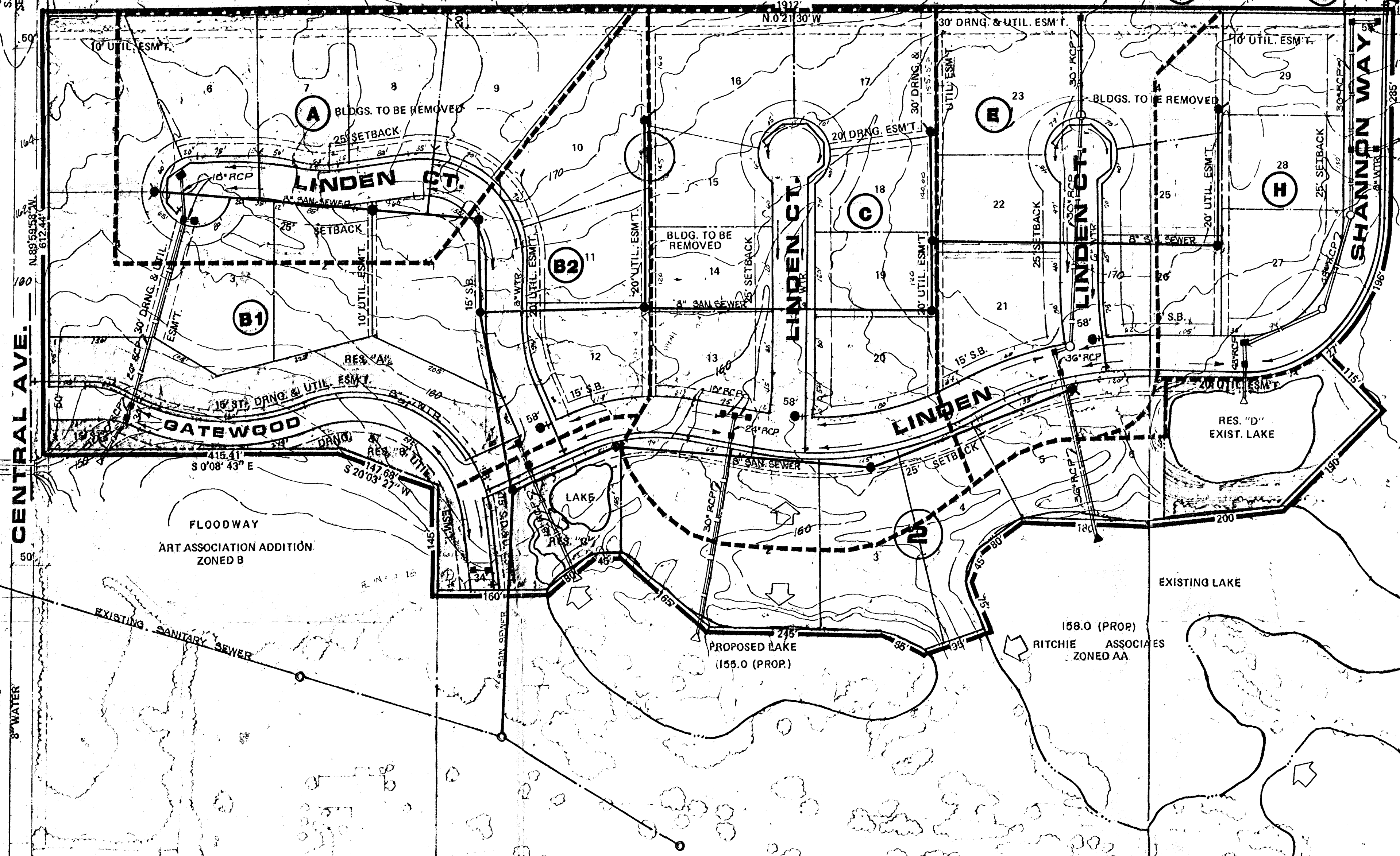
ROUNDS AND PORTER LUMBER COMPANY
ZONED AA

FOREST HILLS ADD.
ZONED AA

3-10' x 9' R.C. Bs
(Exist.)

CENTRAL AVE.
N. 89° 55' 30" W.
S12° 24' 30" E
100'

SHANNON WAY
S 89° 55' 30" W
100'



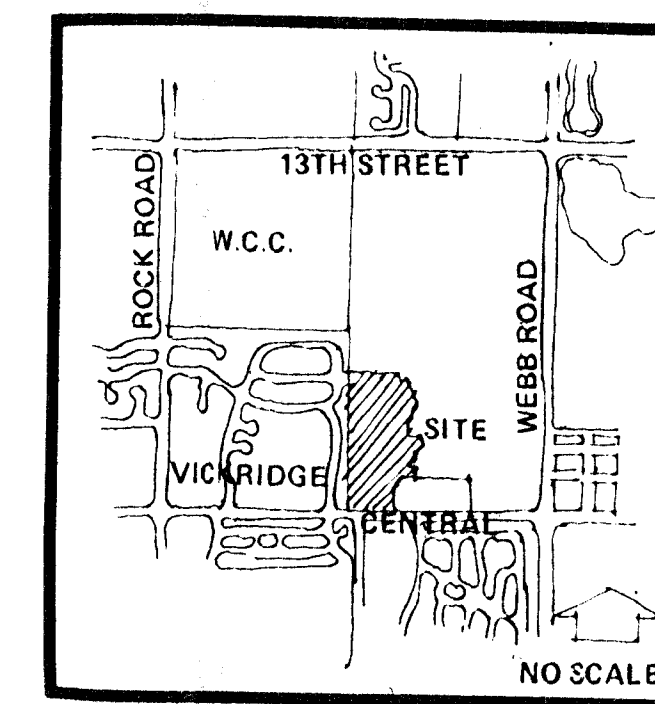
NOTES:

RESERVES "A", "B" AND "C" FOR DRAINAGE, LANDSCAPING,
WALKS, OPEN SPACE AND ENTRY MONUMENTS.
RESERVES "D" IS FOR DRAINAGE LANDSCAPING, WALKS,
AND OPEN SPACE.

TOPOGRAPHY IS FROM AERIAL PHOTOGRAPHY TAKEN JUNE 1985.
A DRAINAGE CONCEPT PLAN IS TO BE PREPARED BY M.K.E.C. AND
SUBMITTED TO CITY ENGINEER.



SCALE 1" = 100'
7' CONTOURS



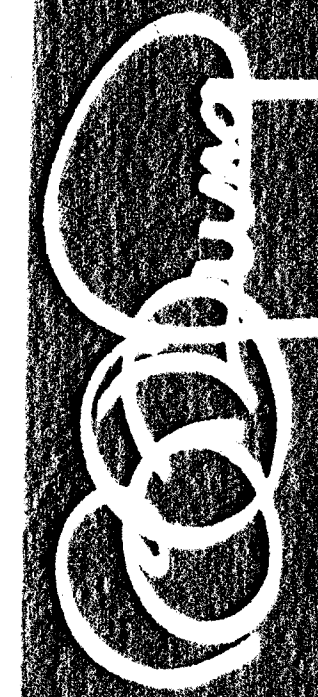
DRAINAGE & UTILITY PLAN FOR

WOODLAND ESTATES

OWNER: RITCHIE ASSOCIATES

8100 SAND ST. NO. SUITE 1400 WICHITA, KANSAS 67226

LOCATION MAP



BILL G. YUNG DESIGN
4912 E. 29TH STREET NORTH, WICHITA, KS 67220
316 865 5667

date JULY 17, 1986
rev. July 21, 1986

sheet title
PRELIMINARY PLAN

project
WOODLAND ESTATES REVISED