

FINAL PLAT OF WOODLAND LAKE ESTATES

AN ADDITION TO WICHITA, SEDGWICK COUNTY, KANSAS

N.E. CORNER S. 1/2
OF N.E. 1/4
SECTION 27, T27S R2E

N.W. CORNER S. 1/2
OF N.E. 1/4
SECTION 27, T27S R2E

$\Delta = 06^{\circ}22'18''$
R = 225.00'
L = 25.02'
CHD. = 25.00'
CHD. BRG. = N65°55'07"E

SCALE: 1" = 100'

LEGEND
• IRON

CENTER SECTION 27,
T27S R2E

$\Delta = 38^{\circ}55'19''$
R = 162.10'
L = 110.12'
CHD. = 108.01'
CHD. BRG. = S71°25'29"E

$\Delta = 38^{\circ}55'19''$
R = 197.72'
L = 134.31'

$\Delta = 26^{\circ}18'55''$
R = 350.00'
L = 160.75'
CHD. = 159.34'
CHD. BRG. = N87°11'37"E

$\Delta = 54^{\circ}00'00''$
R = 200.00'
L = 188.50'
CHD. = 181.60'
CHD. BRG. = N78°57'50"W

$\Delta = 29^{\circ}16'44''$
R = 197.72'
L = 101.04'
CHD. = 99.94'
CHD. BRG. = N76°14'47"W

60.00'
N0°45'37"W

40.00'
N0°49'49"W

388.50'
 $\Delta = 54^{\circ}00'00''$
R = 235.00'
L = 221.48'
254.47'

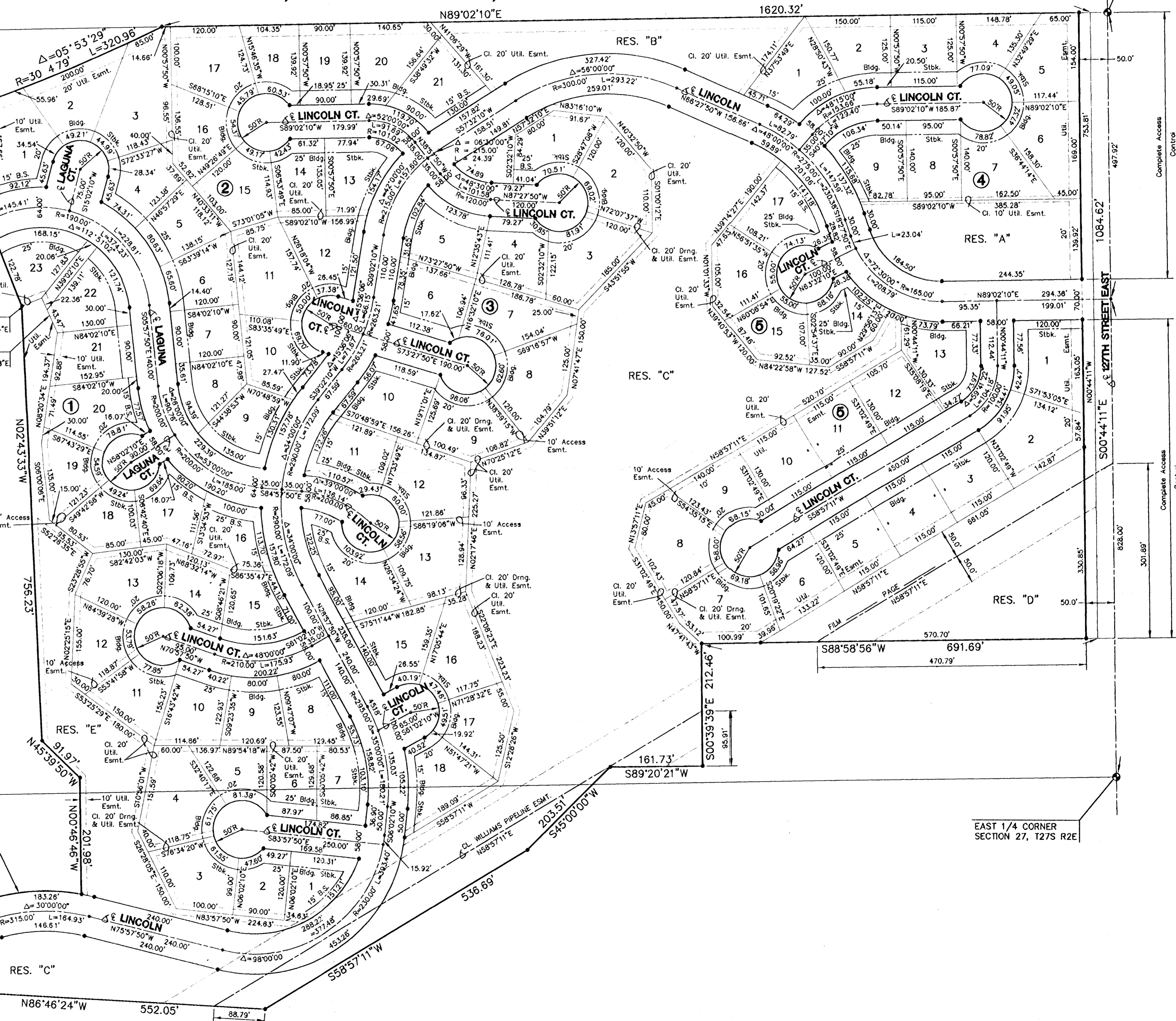
551°57'50"E 326.03'
N1°57'50"W 240.86'

551°57'50"E 326.03'
N1°57'50"W 240.86'

N74°02'10"E 150.00'
N74°02'10"E 150.00'

230.00'
S89°00'05"W

230.00'
S89°00'05"W



EAST 1/4 CORNER
SECTION 27, T27S R2E

1084.62'
S00°44'11"E

828.00'
S00°44'11"E

691.69'
S88°58'56"W

161.73'
S89°20'21"W

203.51'
S45°00'00"W

558°57'11"W

552.05'

88.79'

1620.32'

150.00'

115.00'

148.78'

65.00'

50.00'

1084.62'

1084.62'

1084.62'

1084.62'

1084.62'

1084.62'

1084.62'

1084.62'

1084.62'

1084.62'

1084.62'

1084.62'

1084.62'

1084.62'

1084.62'

1084.62'