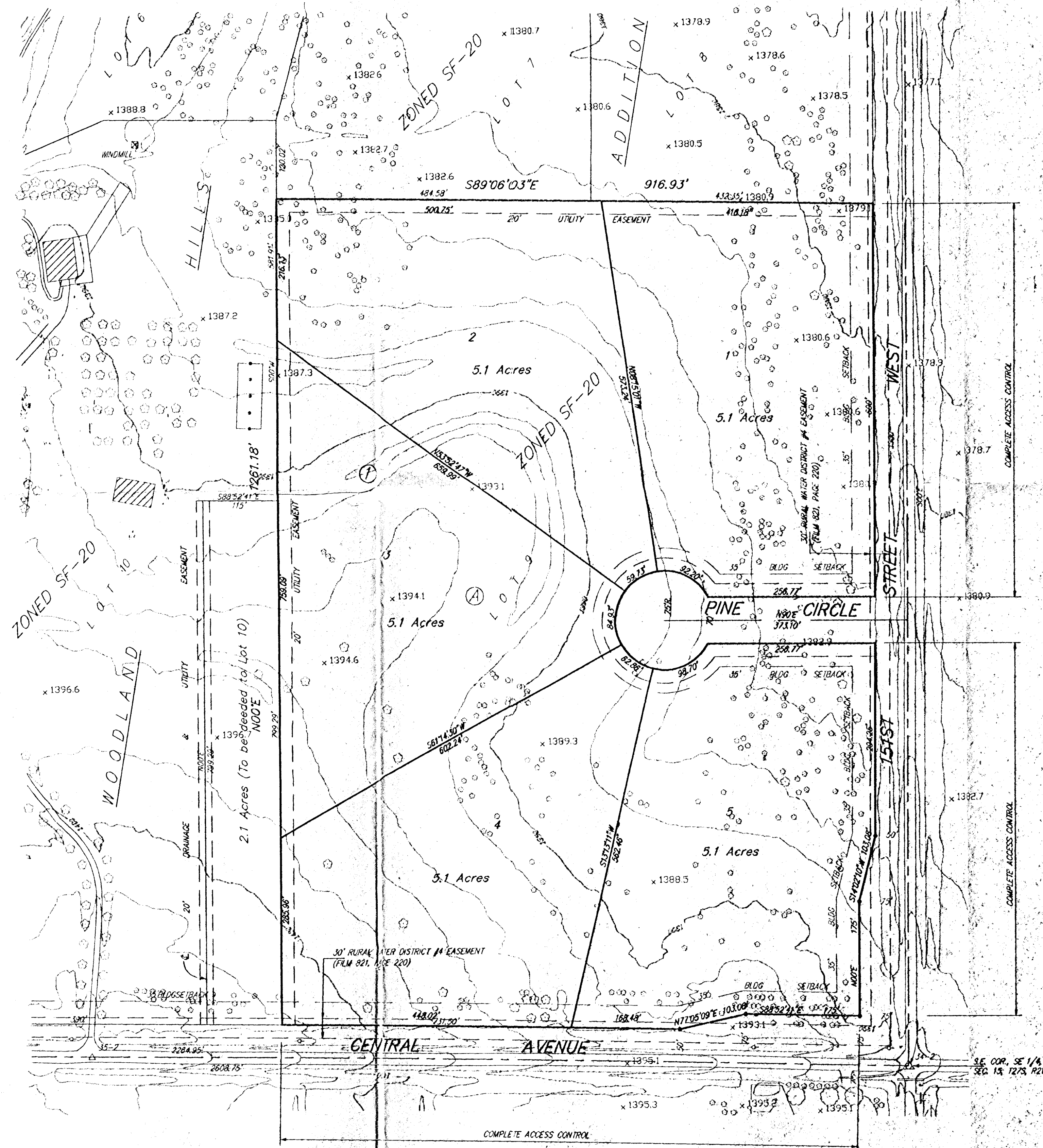


PRELIMINARY PLAT
WOODLAND HILLS 2ND ADDITION
SEDGWICK COUNTY, KANSAS



0 100 200

CONTOURS @ 2' INTERVALS
 Δ = 1/2" IRON PIPE OVER STONE (FOUND)
 □ = 1/2" IRON PIPE (FOUND)
 • = #4 REBAR W/ BAUGHMAN CAP (SET)

LEGAL
 A replat of Lot 8, Block A, Woodland Hills Addition, Sedgwick County, Kansas, EXCEPT the west 115 feet thereof.

BENCHMARK
 R.R. Spike on top of S.W. Wing, Wall Piling of W.P.B. 300' N. of 1/4 Corner. Elev. = 1371.79

OWNERS
 Interior Oil Co.
 Attn: Gene Folkowski
 212 N. Market, Suite 403
 Wichita, KS 67202
 (316) 264-3365

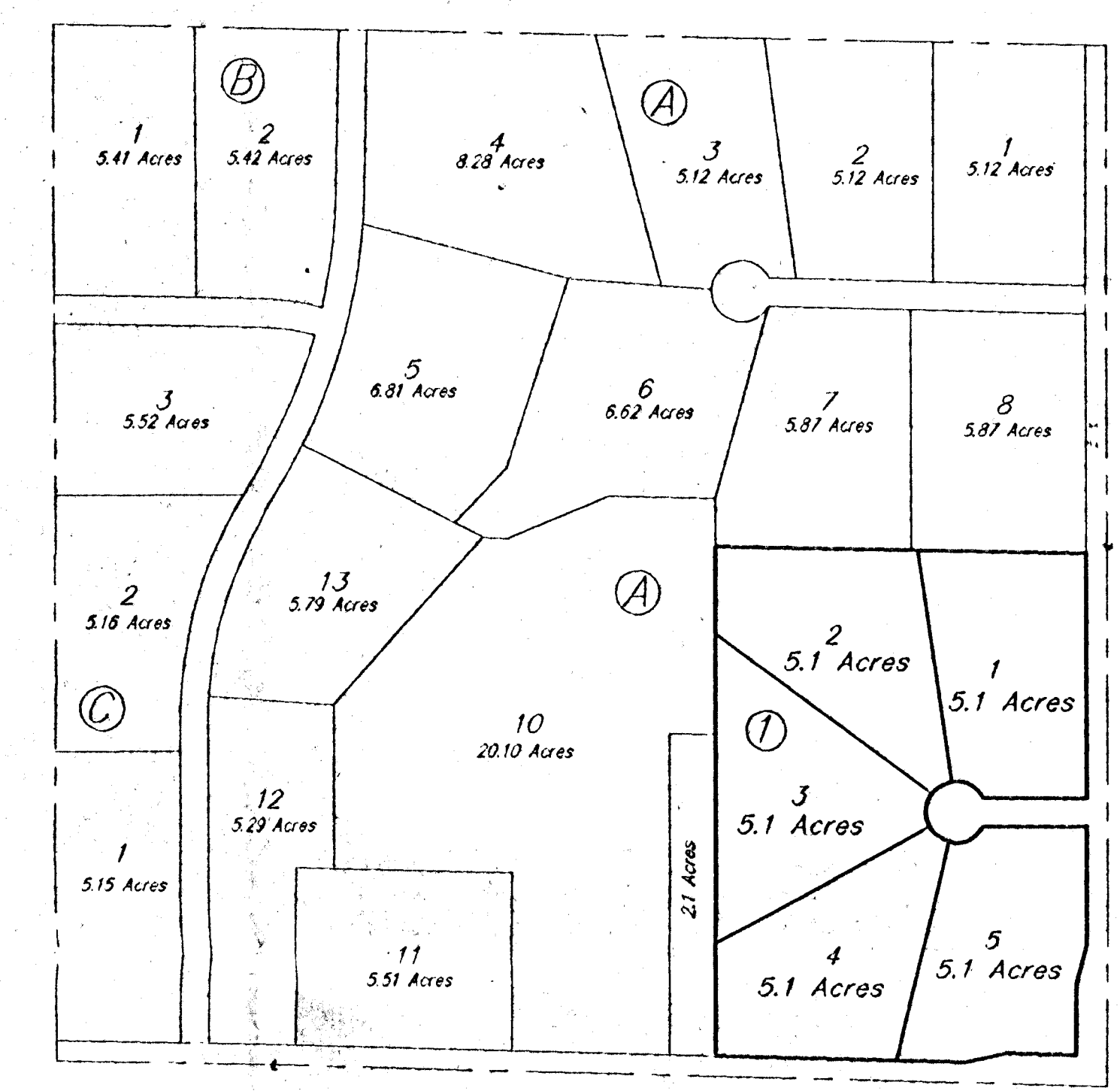
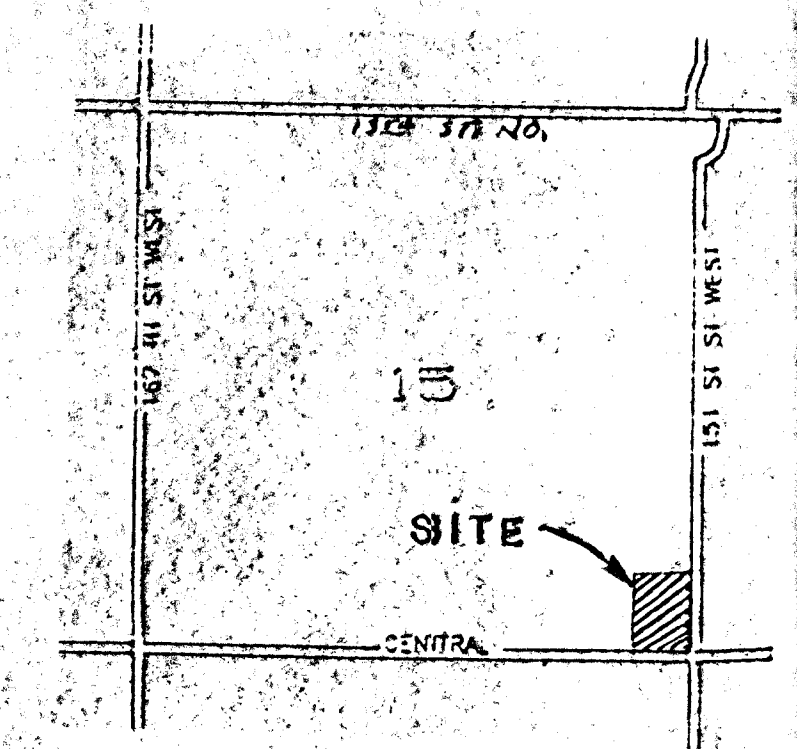


EXHIBIT
WOODLAND HILLS ADDITION
 (NO SCALE)



VICINITY MAP