



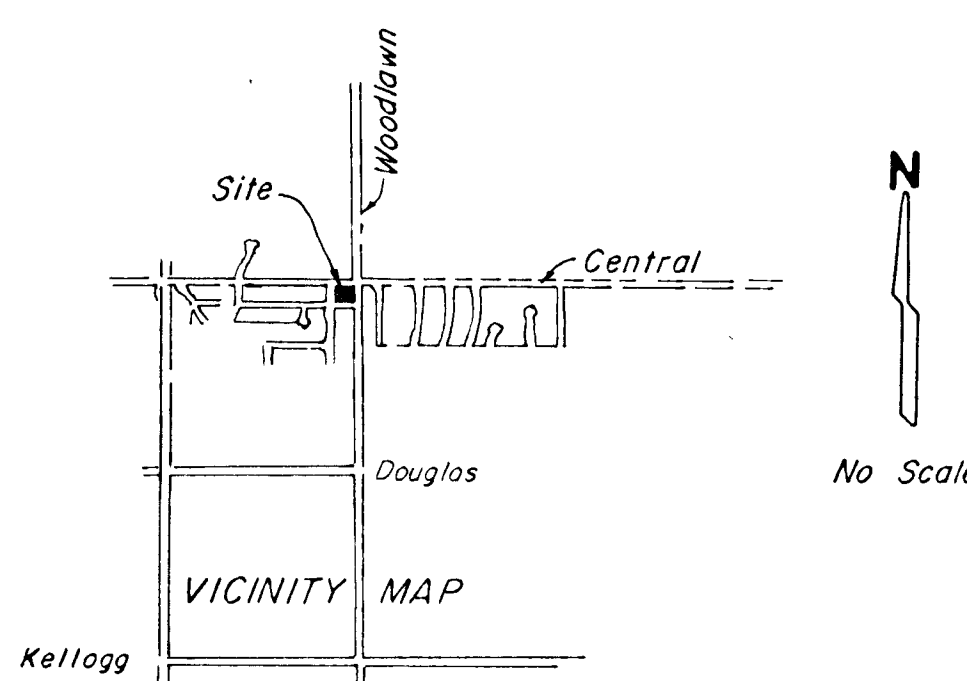
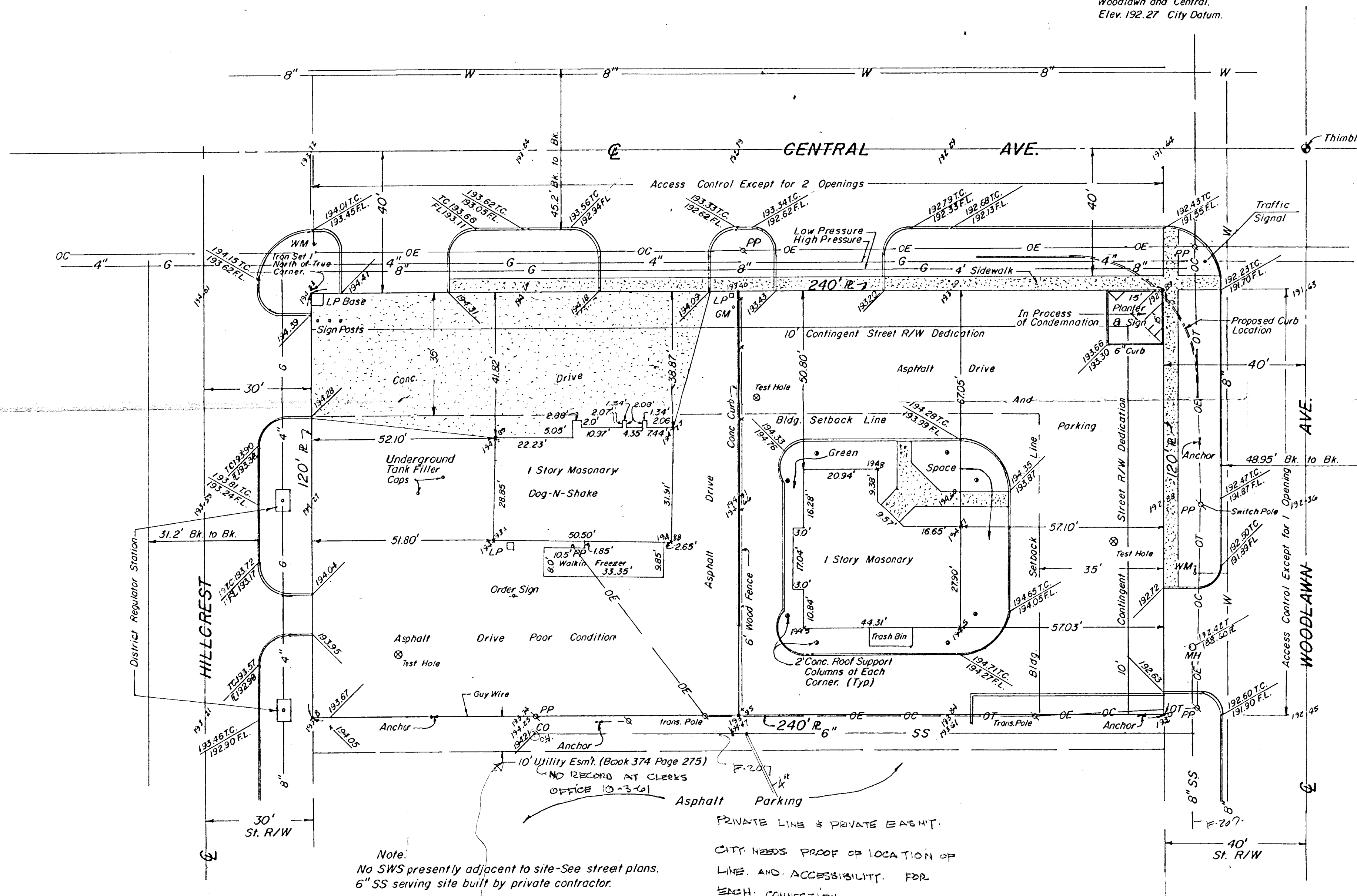
Scale 1"=20'

- LEGEND:**
- Iron
  - PP Power Pole
  - LP Light Pole
  - GM Gas Meter
  - UT Underground Tele.
  - OE Overhead Elec.
  - WM Water Meter
  - UE Underground Elec.
  - OC Overhead Cable T.V.
  - OT Overhead Tele.
  - SS Sanitary Sewer
  - CO Clean Out
  - FH Fire Hydrant
  - SWS Storm Water Sewer

BM  
 Benchmark:  
 City Standard Disc 44" W  
 and 56" N. of G both  
 Woodlawn and Central.  
 Elev. 192.27 City Datum.

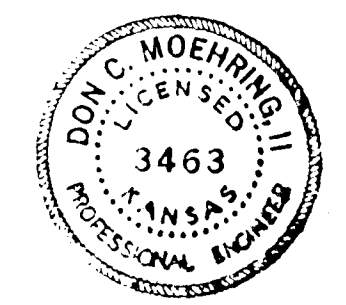
PRELIMINARY PLAT  
**WORLD SAVINGS 1st ADDITION**  
 To Wichita, Kansas

The West 120' of the North 120', & The East 120'  
 of the North 120' of "RESERVE" in Oakwood  
 Estates Second Addition to Wichita, Kansas



Note:  
 No SWS presently adjacent to site-See street plans.  
 6" SS serving site built by private contractor.

- Note:
1. Lot Area - 28,800 sq. ft.
  2. Adjacent Property Zoned Light Commercial.
  3. Setbacks by City Code, 10' to 25'.
  4. Street Widening - See attached plan for proposed Improvements.
  5. Area not in flood hazard area.



Moehring & Associates  
 Consulting Engineers  
 Wichita  
 May 18, 1983 83-035-AS