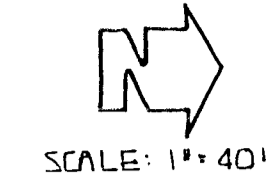


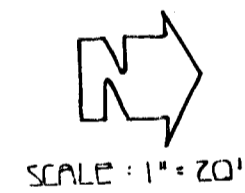
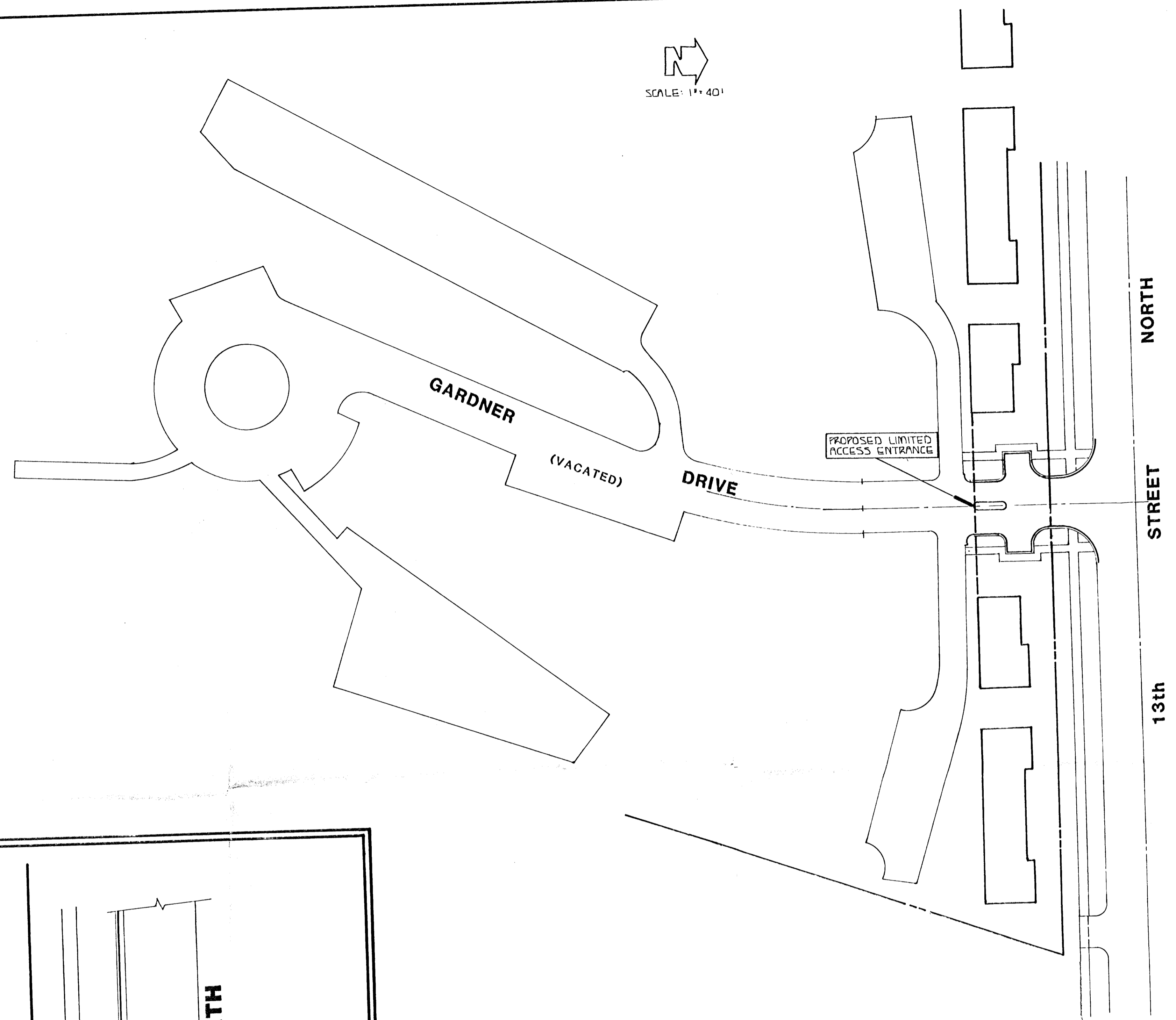
WORLD IMPACT ADDITION

BEING A REPLAT OF LOTS 1, 2, & 3, GARDNER PLAZA, AN ADDITION TO WICHITA, KANSAS, AND GARDNER DRIVE LYING BETWEEN SAID LOTS, BEING VACATED BY VIRTUE OF K.S.A. 12-512(b).

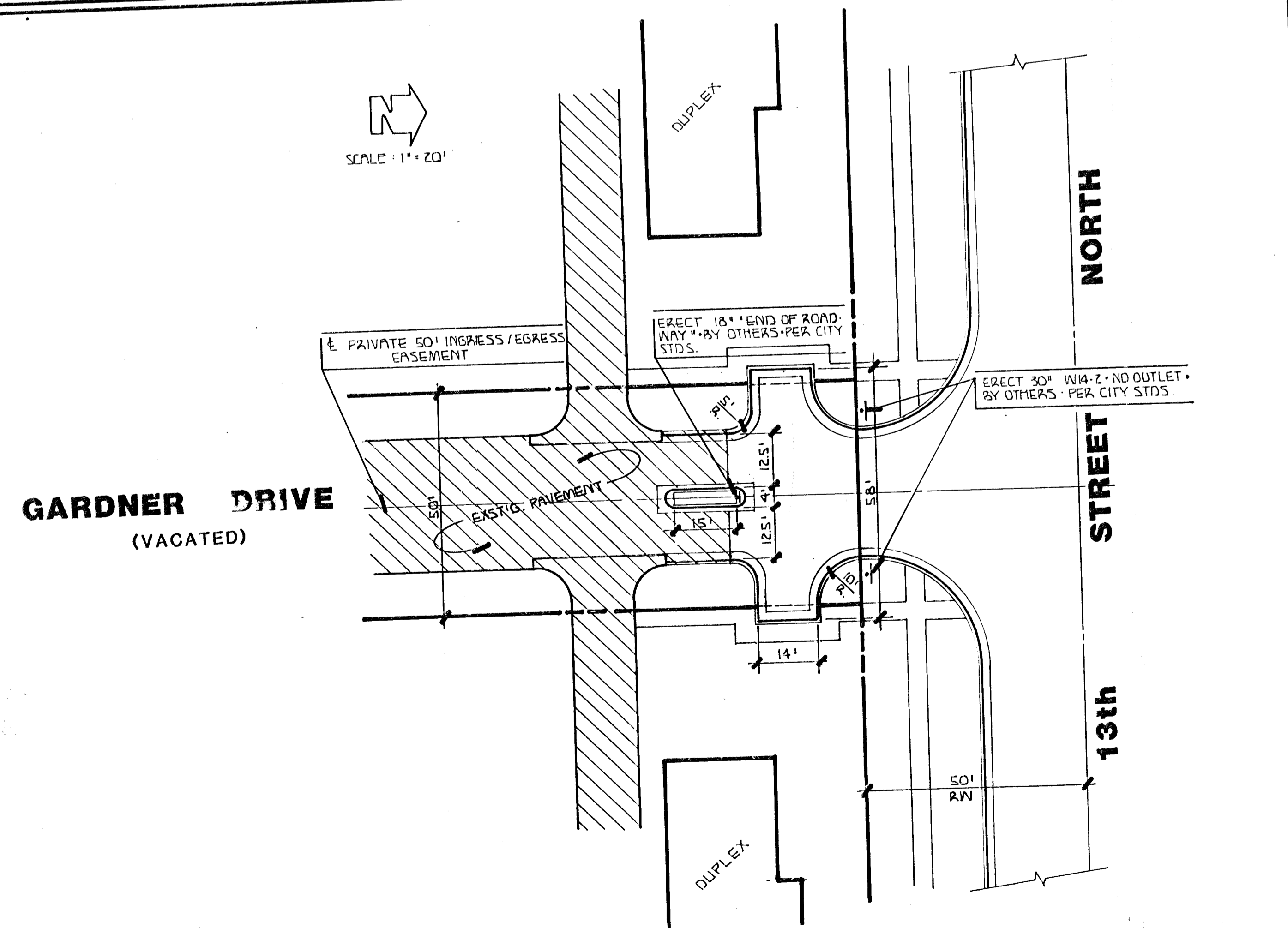
OWNER: WORLD IMPACT INC.



SCALE: 1" = 40'



SCALE: 1" = 20'



CUL-DE-SAC STREET CLOSURE ON GARDNER DRIVE