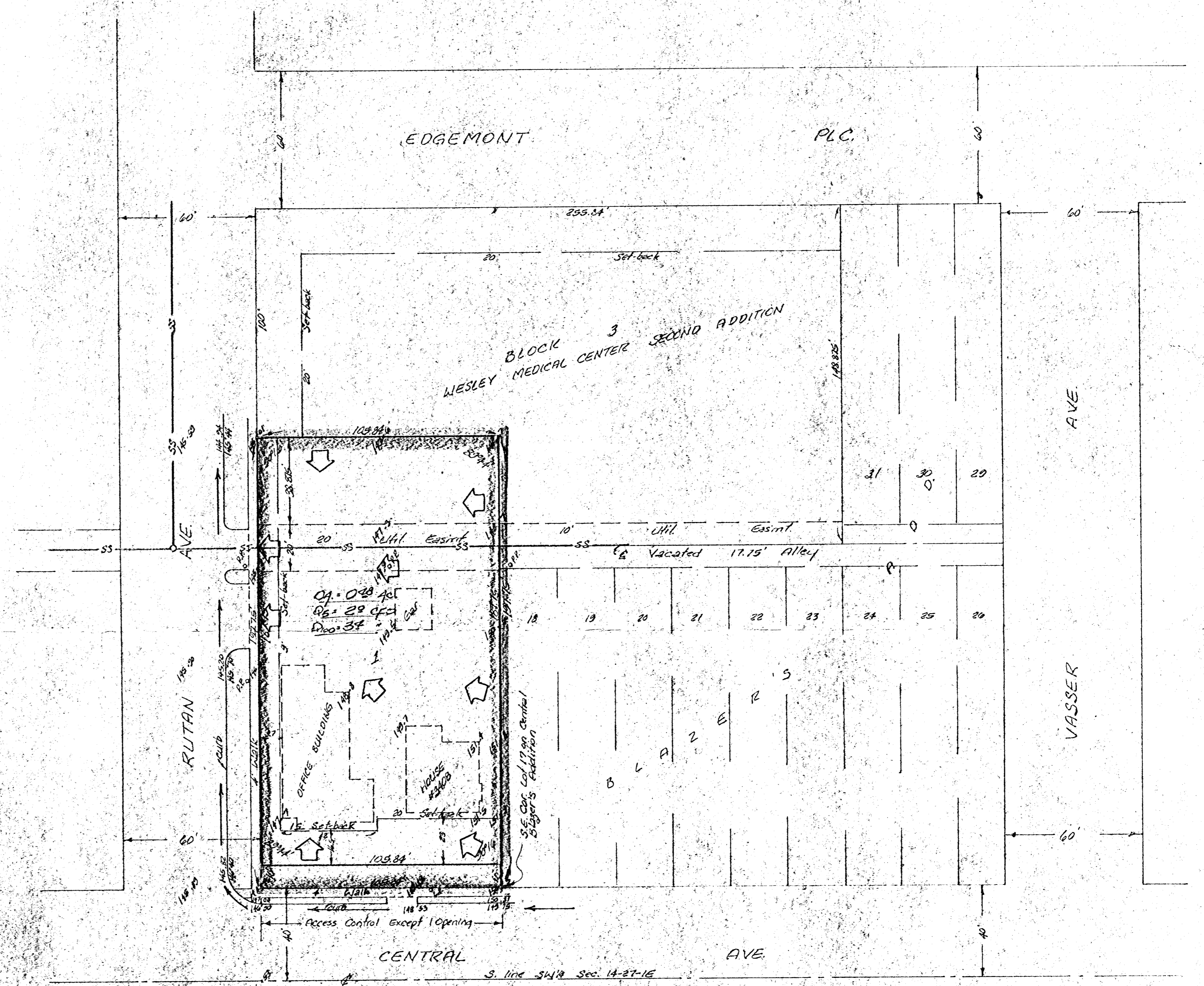


1" = 30'
Elev. = City Datum

BENCH MARK:
X cross on rim of M.H. in E of walk
at NE corner of Central & Hillside
Elev. = 144.20 City Datum



SKETCH PLAT
WESLEY ENDOWMENT ADDITION

The east 584 feet of Lot 13 and all of Lots 14, 15, 16 and 17 on Central Ave, together with the S 1/2 of vacated alley adjacent on the north and the south 40 feet of lots 38, 39, 40 and 41 and the south 40 feet of the east 584 feet of Lot 42, on Edgemont Plc together with the N 1/2 of vacated Alley adjacent on the south, in Blazer's Addition, Wichita, Sedgwick County, Kansas.

WESLEY MEDICAL ENDOWMENT FOUNDATION
ACCENT ON KIDS, INC.
MRS. H. C. WEAR

**Drainage
plan**