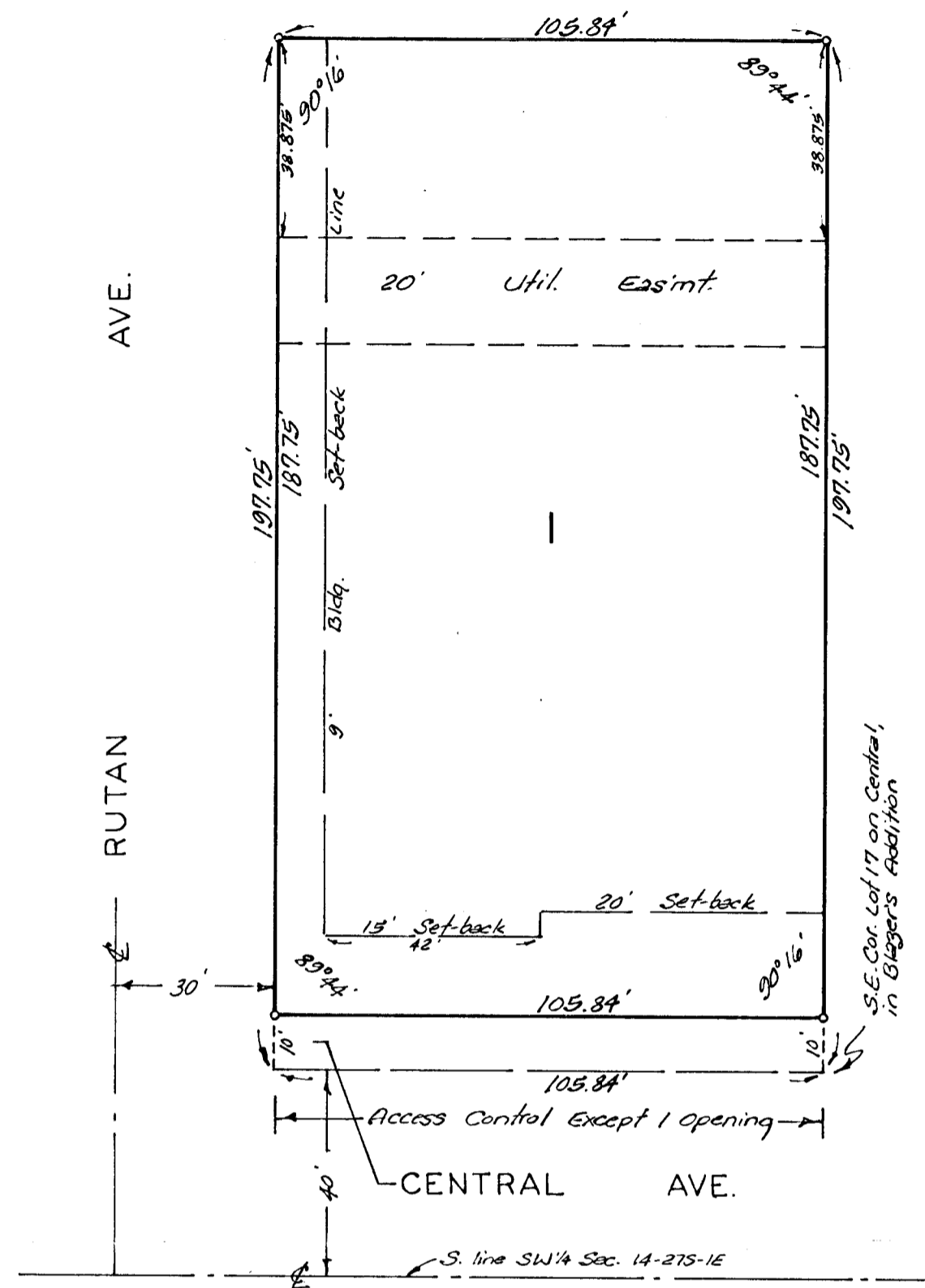


# WESLEY ENDOWMENT ADDITION

WICHITA, KANSAS.



N  
↑  
1" = 30'  
○ = iron

State of Kansas } S.S. We, Baughman Company, P.A. Surveyors in aforesaid county and state do hereby certify that we, have surveyed and platted "WESLEY ENDOWMENT ADDITION" Wichita, Kansas and that the accompanying plat is a true and correct exhibit of the property surveyed, described as and being a replat of the east 5.84 feet of Lot 13 and all of Lots 14, 15, 16 and 17 on Central Ave., together with the S 1/2 of vacated alley adjacent on the north and the south 40 feet of Lots 38, 39, 40 and 41, and the south 40 feet of the east 5.84 feet of Lot 42 on Edgemont Plc., together with the N 1/2 of vacated alley adjacent on the south, all in Blazer's Addition, Wichita, Sedgwick County, Kansas All being situated in the SW 1/4 of Sec. 14, Twp. 27 N, R-1-E.

Baughman Company, P. A.

Date \_\_\_\_\_  
William L. Korber Surveyor

Know all men by these presents that we, the undersigned, have caused the land described in the surveyors certificate to be platted into a Lot and Street to be known as "WESLEY ENDOWMENT ADDITION", Wichita, Kansas. The utility easement is hereby granted as indicated for the construction and maintenance of all public utilities. The street is hereby dedicated to and for the use of the public. All abutters rights of access to or from Central Ave., over and across the south line of Lot 1 are hereby granted to the City of Wichita, provided however that Lot 1 shall have access to Central Ave. at 1 point over the south line of Lot 1, as shall be determined by the City Engineer of the City of Wichita, Kansas.

This plat of "WESLEY ENDOWMENT ADDITION", Wichita, Kansas, has been submitted to and approved by the Wichita-Sedgwick County Metropolitan Area Planning Commission, Wichita, Kansas.  
Dated this \_\_\_\_\_ day of \_\_\_\_\_, 1982.  
Wichita-Sedgwick County Metropolitan Area Planning Commission.

\_\_\_\_\_  
James L. Gardner II Chairman  
\_\_\_\_\_  
Robert A. Lakin Secretary

This plat approved and all dedications shown hereon accepted by the Board of Commissioners of the City of Wichita, Kansas, this \_\_\_\_\_ day of \_\_\_\_\_, 1982.

\_\_\_\_\_  
Albert J. Kirk Mayor  
\_\_\_\_\_  
Donald C. Givick City Clerk

This plat approved and all dedications shown hereon accepted by the Board of Commissioners of Sedgwick County, Kansas, this \_\_\_\_\_ day of \_\_\_\_\_, 1982.

\_\_\_\_\_  
Jack Spratt Chairman  
\_\_\_\_\_  
Tom Scott Commissioner  
\_\_\_\_\_  
Donald E. Grogg Commissioner  
\_\_\_\_\_  
Dorothy K. White County Clerk

Entered on transfer record, this \_\_\_\_\_ day of \_\_\_\_\_, 1982.

\_\_\_\_\_  
Dorothy K. White County Clerk

\_\_\_\_\_  
Mrs. H.C. Wear  
Wesley Medical Endowment Foundation  
by \_\_\_\_\_  
Mrs. H.C. Wear  
Accent on Kids, Inc.  
\_\_\_\_\_  
Jerry T. Elliott President

State of Kansas } S.S. The foregoing instrument acknowledged before me, this \_\_\_\_\_ day of \_\_\_\_\_, 1982, by Mrs. H.C. Wear, a single person and by Mrs. H.C. Wear for Wesley Medical Endowment Foundation and by Jerry T. Elliott, president of Accent on Kids, Inc.

\_\_\_\_\_  
Notary Public  
My App't. Exp. \_\_\_\_\_

State of Kansas } S.S. This is to certify that this plat has been filed for record in the office of the Register of Deeds, this \_\_\_\_\_ day of \_\_\_\_\_, 1982, at \_\_\_\_\_ o'clock \_\_\_\_\_ M; and is duly recorded.

\_\_\_\_\_  
Bette F. McCart Register of Deeds  
\_\_\_\_\_  
Pat Kettler Deputy