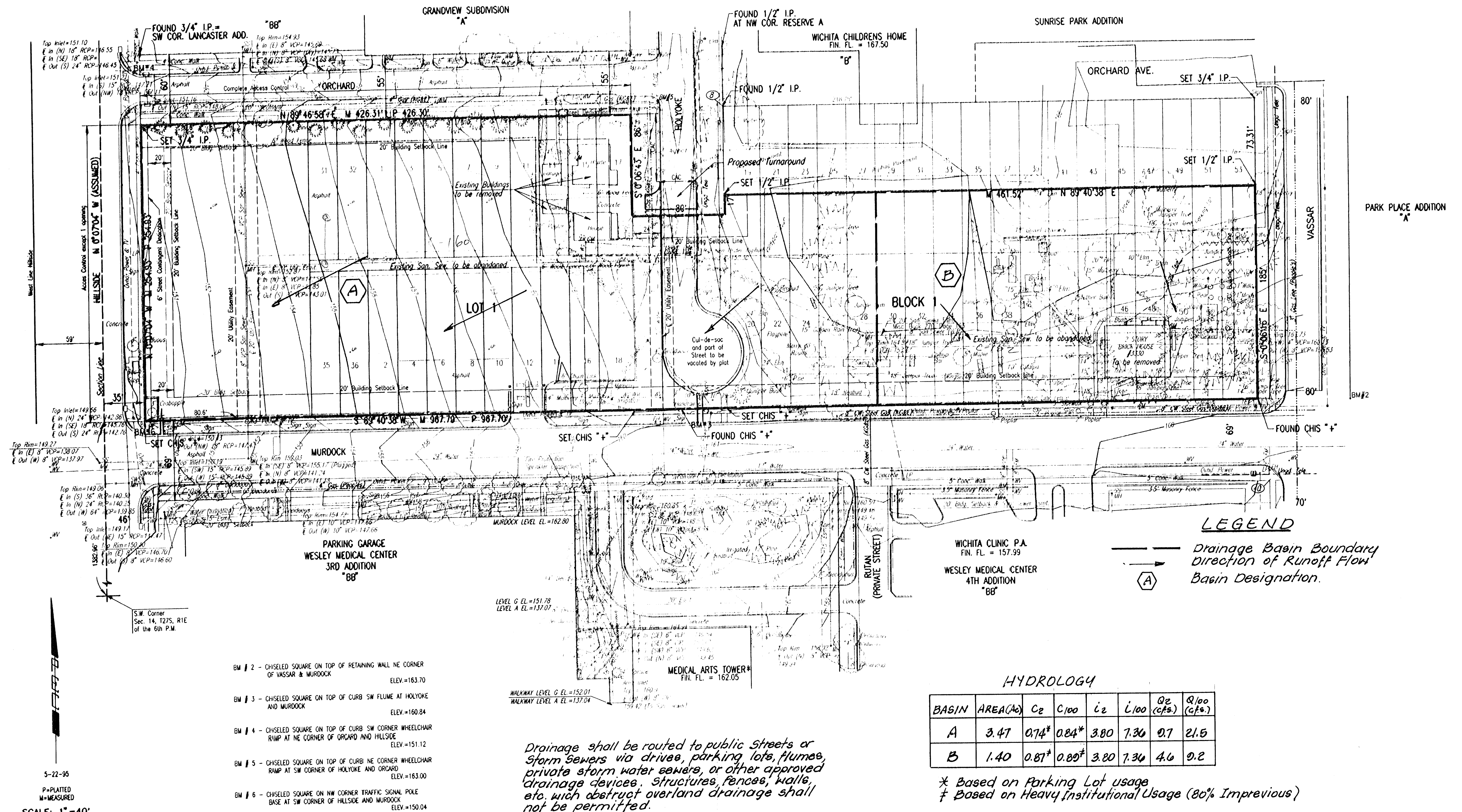


# DRAINAGE PLAN OF WESLEY MEDICAL CENTER 5TH ADDITION

OWNER: H.C.A. HEALTH SERVICES OF KANSAS, INC.  
c/o THOMAS L. NESTER  
550 N. HILLSIDE  
WICHITA, KANSAS 67218

ENGINEER: PROFESSIONAL ENGINEERING CONSULTANTS, P.A.  
303 S. TOPEKA  
WICHITA, KANSAS 67202



**LEGEND**

— Drainage Basin Boundary  
 → Direction of Runoff Flow  
 (A) Basin Designation.

**HYDROLOGY**

BASIN	AREA(Ac)	C <sub>2</sub>	C <sub>100</sub>	i <sub>2</sub>	i <sub>100</sub>	Q <sub>2</sub> (cfs.)	Q <sub>100</sub> (cfs.)
A	3.47	0.74*	0.84*	3.80	7.36	0.7	21.5
B	1.40	0.87*	0.89†	3.80	7.36	4.6	0.2

\* Based on Parking Lot usage  
 † Based on Heavy Institutional Usage (80% Impervious)

Drainage shall be routed to public streets or storm sewers via drives, parking lots, flumes, private storm water sewers, or other approved drainage devices. Structures, fences, walls, etc. which obstruct overland drainage shall not be permitted.

- BM # 2 - CHISELED SQUARE ON TOP OF RETAINING WALL NE CORNER OF VASSAR & MURDOCK ELEV.=163.70
- BM # 3 - CHISELED SQUARE ON TOP OF CURB SW FLUME AT HOLYOKE AND MURDOCK ELEV.=160.84
- BM # 4 - CHISELED SQUARE ON TOP OF CURB SW CORNER WHEELCHAIR RAMP AT NE CORNER OF ORCARD AND HILLSIDE ELEV.=151.12
- BM # 5 - CHISELED SQUARE ON TOP OF CURB NE CORNER WHEELCHAIR RAMP AT SW CORNER OF HOLYOKE AND ORCARD ELEV.=163.00
- BM # 6 - CHISELED SQUARE ON NW CORNER TRAFFIC SIGNAL POLE BASE AT SW CORNER OF HILLSIDE AND MURDOCK ELEV.=150.04

SCALE: 1" = 40'

LST/USA/4/9/1995/95022/prof/ma.dgn  
 date printed: 6/12/95  
 dwg no: 1001