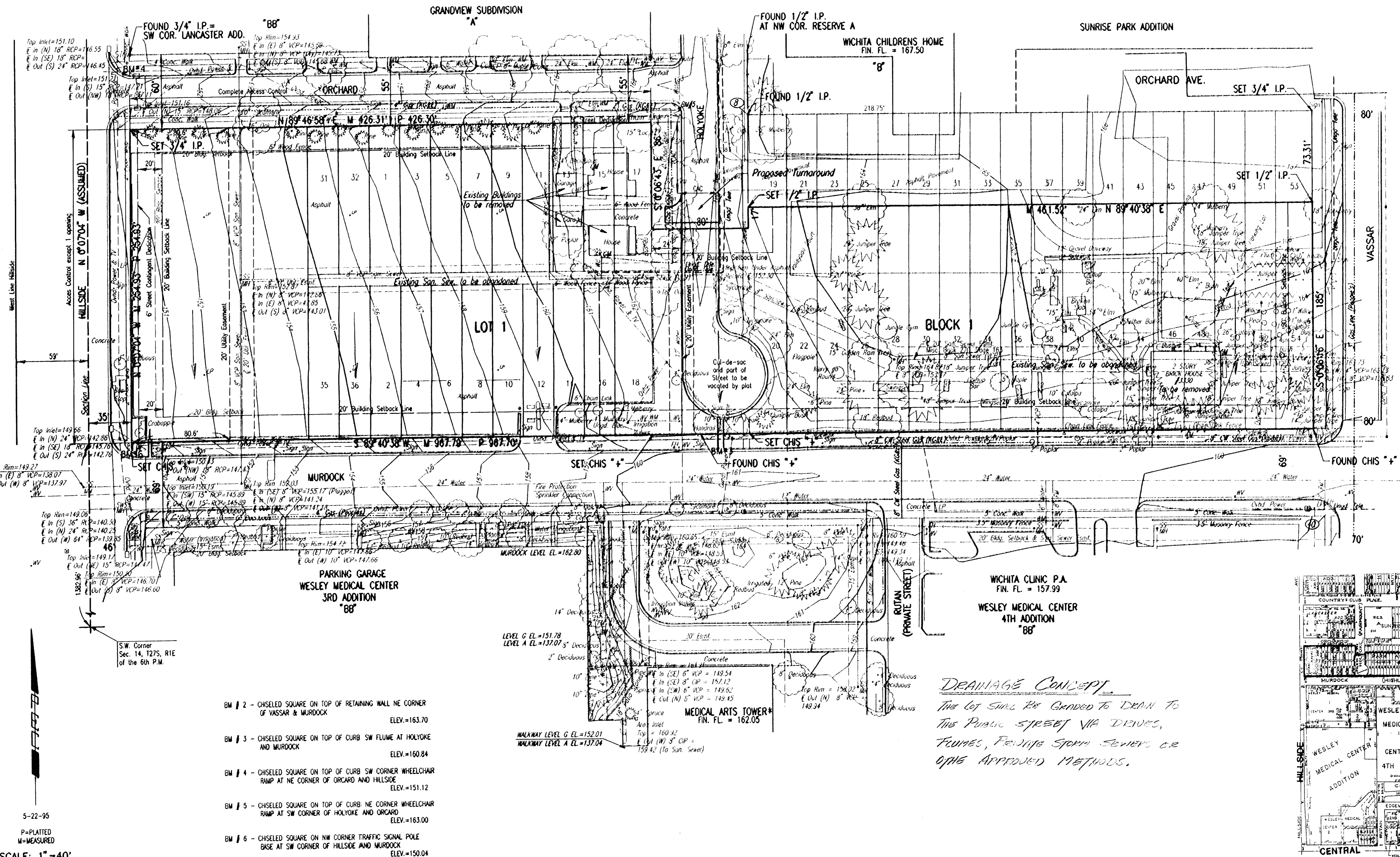


PRELIMINARY PLAT OF WESLEY MEDICAL CENTER 5TH ADDITION

OWNER: H.C.A. HEALTH SERVICES OF KANSAS, INC.
c/o THOMAS L. NESTER
550 N. HILLSIDE
WICHITA, KANSAS 67218

ENGINEER: PROFESSIONAL ENGINEERING CONSULTANTS, P.A.
303 S. TOPEKA
WICHITA, KANSAS 67202

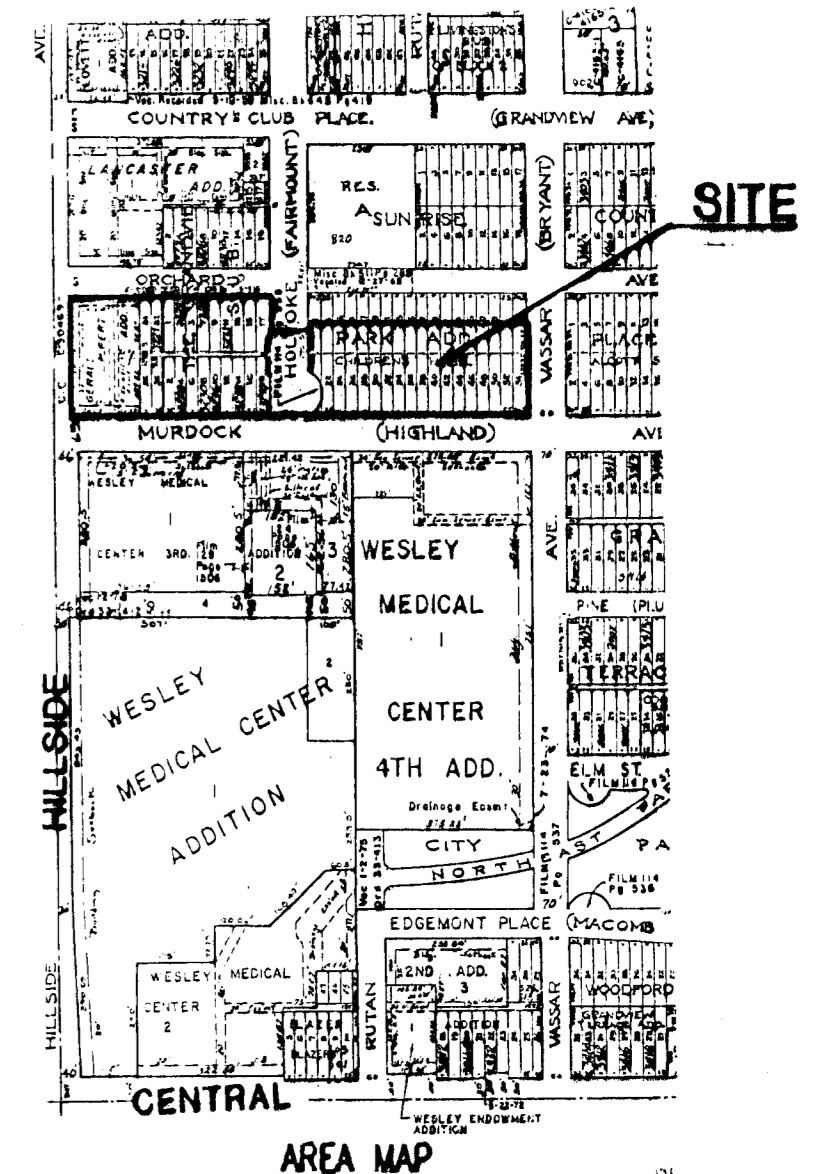


PARK PLACE ADDITION
"A"

BM #2

WICHITA CLINIC P.A.
FIN. FL. = 157.99
WESLEY MEDICAL CENTER
4TH ADDITION
"BB"

DRAINAGE CONCEPT
The lot shall be graded to drain to the public streets via drives, flumes, private storm sewers or other approved methods.



- BM # 2 - CHISELED SQUARE ON TOP OF RETAINING WALL NE CORNER OF VASSAR & MURDOCK
ELEV.=163.70
- BM # 3 - CHISELED SQUARE ON TOP OF CURB SW FLUME AT HOLYOKE AND MURDOCK
ELEV.=160.84
- BM # 4 - CHISELED SQUARE ON TOP OF CURB SW CORNER WHEELCHAIR RAMP AT NE CORNER OF ORCAD AND HILLSIDE
ELEV.=151.12
- BM # 5 - CHISELED SQUARE ON TOP OF CURB NE CORNER WHEELCHAIR RAMP AT SW CORNER OF HOLYOKE AND ORCAD
ELEV.=163.00
- BM # 6 - CHISELED SQUARE ON NW CORNER TRAFFIC SIGNAL POLE BASE AT SW CORNER OF HILLSIDE AND MURDOCK
ELEV.=150.04

SCALE: 1" = 40'

5-22-95

P=PLATTED
M=MEASURED

WST/USA/dgr: 885/95102/prelim.dgn
 date plotted: 5/18/95
 plotted by: sonchay