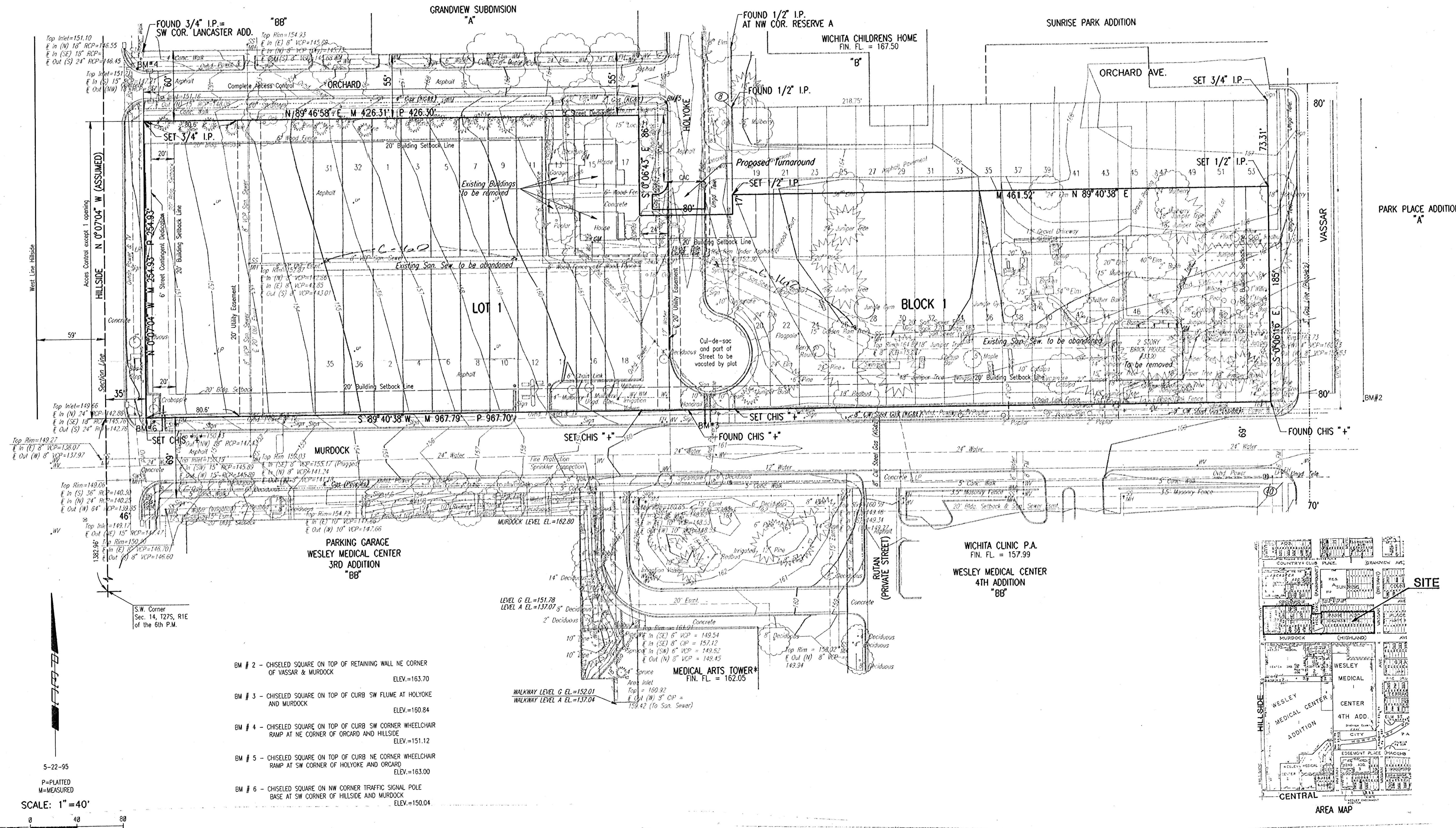


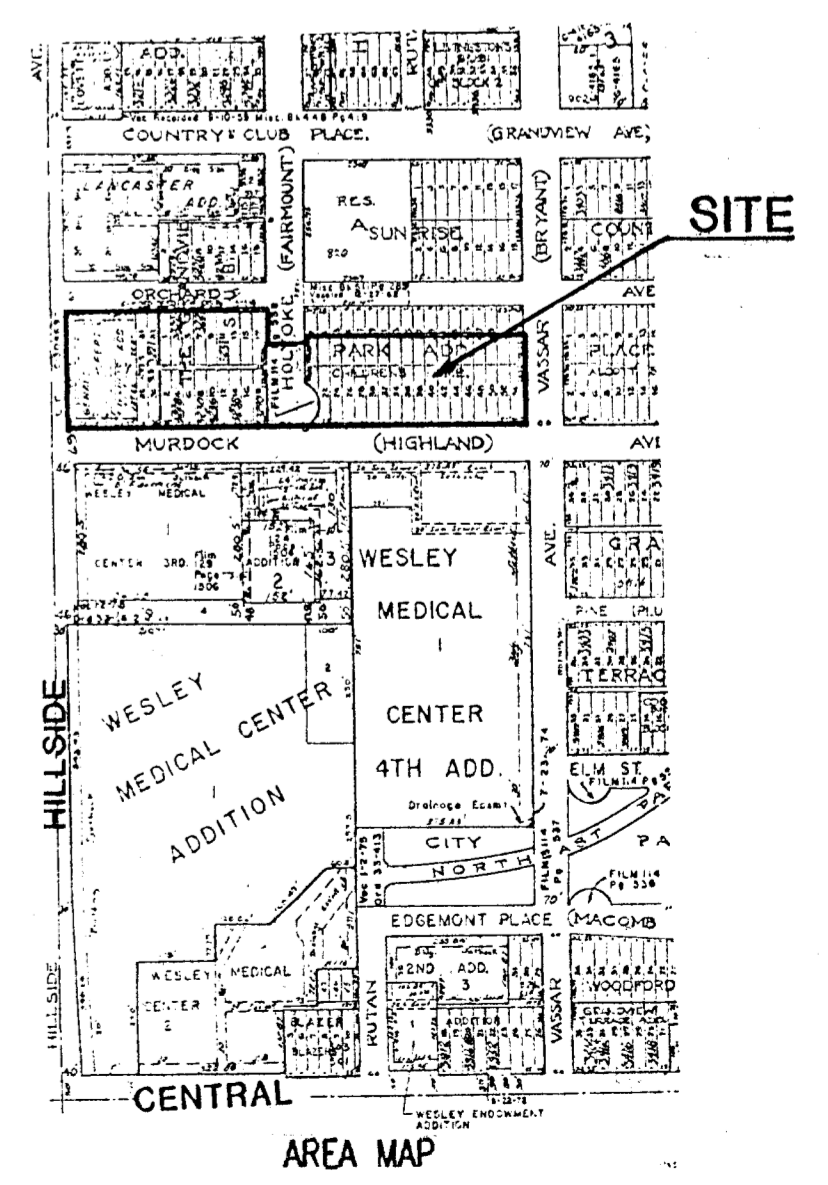
PRELIMINARY PLAT OF
WESLEY MEDICAL CENTER
5TH ADDITION

OWNER: H.C.A. HEALTH SERVICES OF KANSAS, INC.
 c/o THOMAS L. NESTER
 550. N. HILLSIDE
 WICHITA, KANSAS 67218

ENGINEER: PROFESSIONAL ENGINEERING CONSULTANTS, P.A.
 303 S. TOPEKA
 WICHITA, KANSAS 67202



- BM # 2 - CHISELED SQUARE ON TOP OF RETAINING WALL NE CORNER OF VASSAR & MURDOCK
ELEV.=163.70
- BM # 3 - CHISELED SQUARE ON TOP OF CURB SW FLUME AT HOLYOKE AND MURDOCK
ELEV.=160.84
- BM # 4 - CHISELED SQUARE ON TOP OF CURB SW CORNER WHEELCHAIR RAMP AT NE CORNER OF ORCARD AND HILLSIDE
ELEV.=151.12
- BM # 5 - CHISELED SQUARE ON TOP OF CURB NE CORNER WHEELCHAIR RAMP AT SW CORNER OF HOLYOKE AND ORCARD
ELEV.=163.00
- BM # 6 - CHISELED SQUARE ON NW CORNER TRAFFIC SIGNAL POLE BASE AT SW CORNER OF HILLSIDE AND MURDOCK
ELEV.=150.04



user:ustm/dgn:1995/05/22/prelim.dgn
 date plotted: 5/16/95
 deliner: to:sonchek

