



PRELIMINARY PLAT OF WESLEY WEST ADDITION TO WICHITA, SEDGWICK COUNTY, KANSAS

OWNER: HCA HEALTH SERVICES OF KANSAS INC.
c/o COLUMBIA/HCA
c/o THOMAS W. HULME
P.O. BOX 550
NASHVILLE, TENNESSE 37202-0550

ENGINEER: PROFESSIONAL ENGINEERING CONSULTANTS, P.A.
303 S. TOPEKA
WICHITA, KANSAS 67202

DRAINAGE CONCEPT 2/195

LEGEND
 Direction of Minor Flow.
 Direction of Major Flow.

Prop. Detention Basin.

SCALE: 1"=100'
FEBRUARY, 1995

C.A.C. = COMPLETE ACCESS CONTROL

 EXISTING STREET PAVEMENT

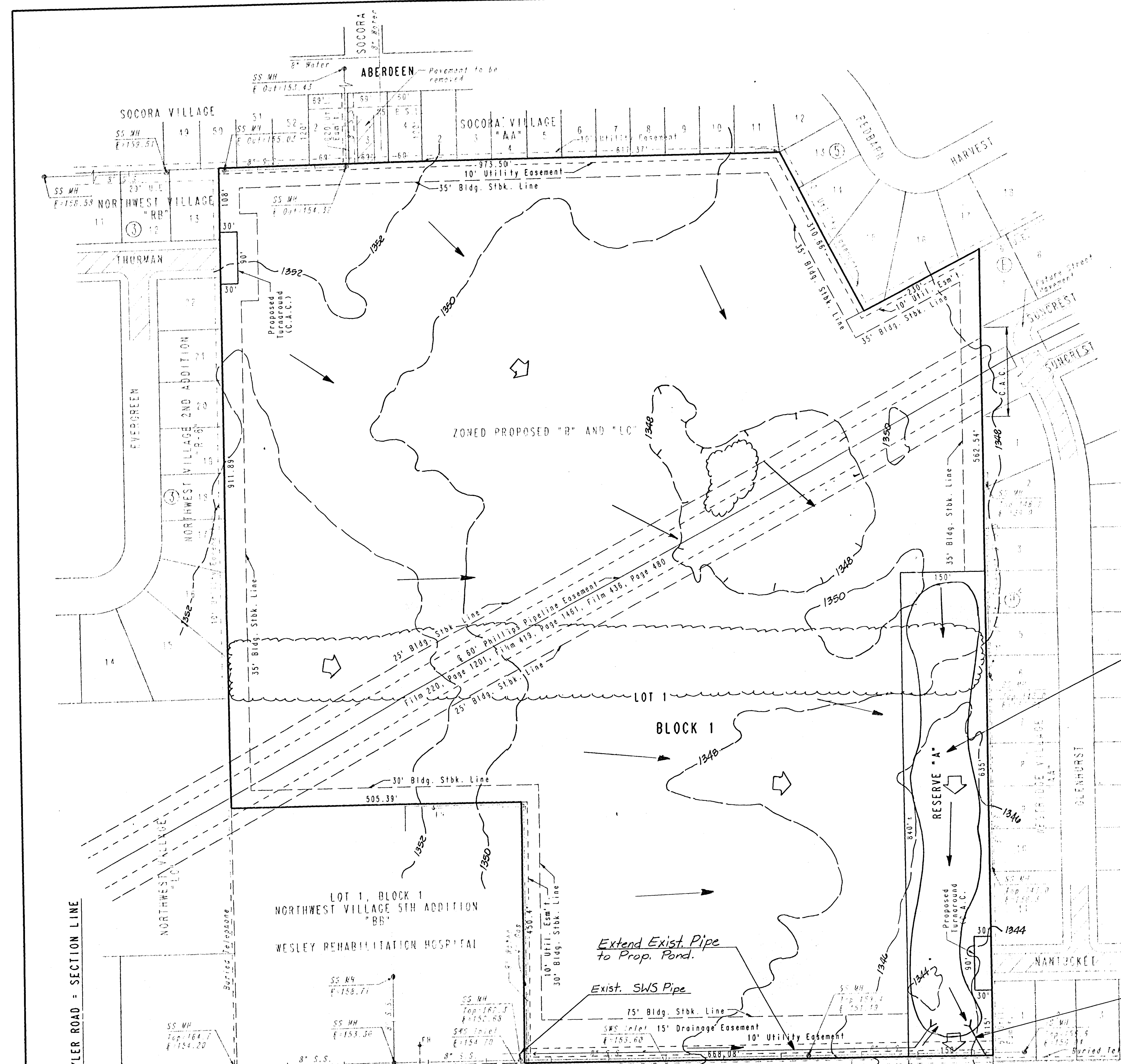
B.M. - CITY OF WICHITA DISC 48 FEET EAST AND 48 FEET NORTH OF THE INTERSECTION OF THE CENTERLINES OF 13TH STREET NORTH AND TYLER ROAD.
ELEV. 169.929 CITY DATUM

TOPOGRAPHY DATE: AUGUST, 1990

NOTE: CONTOUR ELEVATION DATA = M.S.L.
ELEVATIONS OF SANITARY SEWER MANHOLES AND STORM SEWER INLETS = CITY DATUM.

RESERVE "A" SHALL BE UTILIZED FOR A STORM WATER RETENTION/ DETENTION SYSTEM, UTILITIES CONFINED TO EASEMENTS, LANDSCAPING AND PEDESTRIAN IMPROVEMENTS.

Note: All site drainage to be carried overland or in storm sewer to proposed detention basin in Reserve 'A'.



Extend Exist. Pipe to Prop. Pond.

Exist. SWS Pipe

Extend Exist. Pipe to Prop. Pond.

TYLER ROAD - SECTION LINE