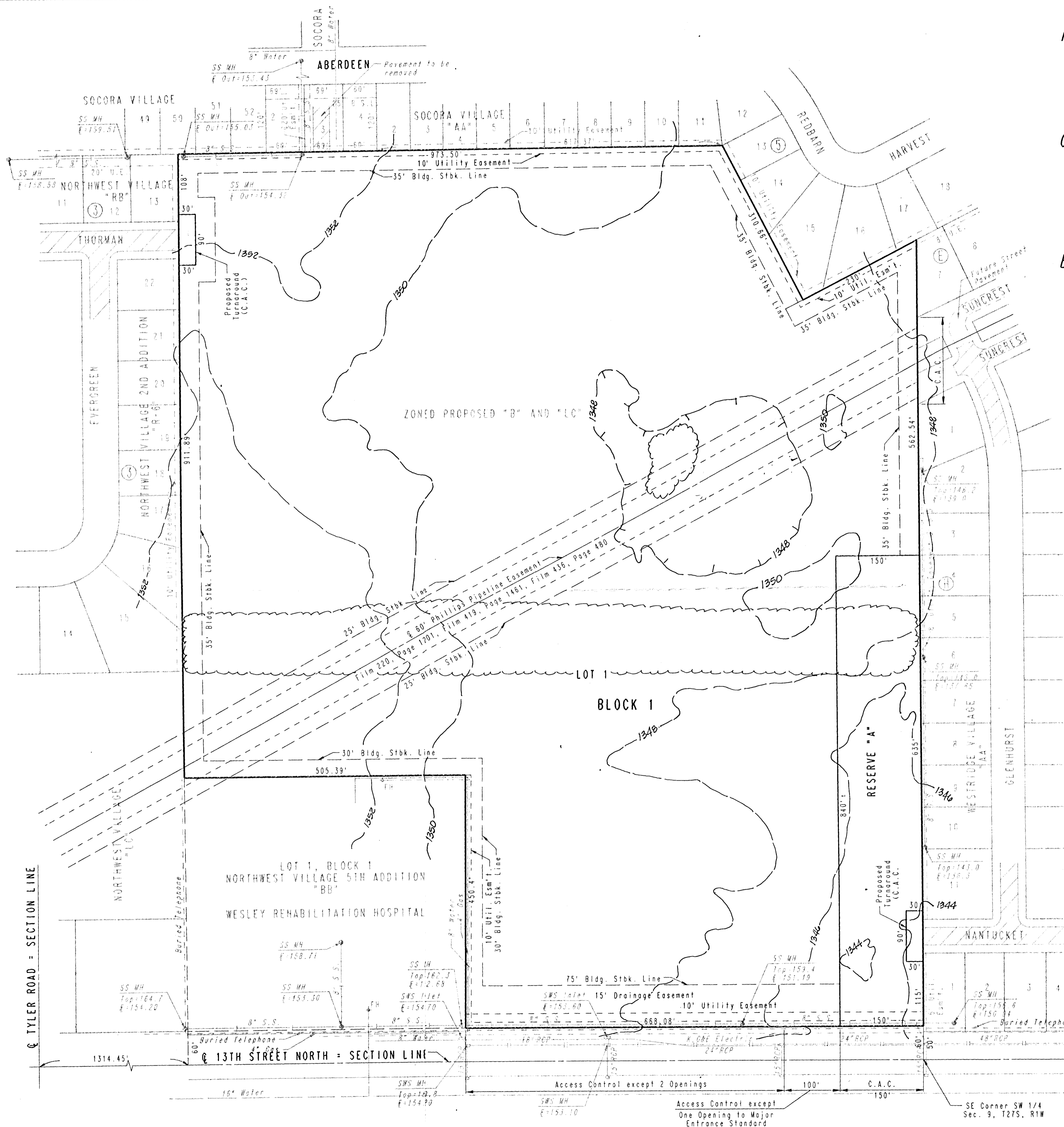


PRELIMINARY PLAT OF
WESLEY WEST ADDITION
TO WICHITA, SEDGWICK COUNTY, KANSAS

OWNER: HCA HEALTH SERVICES OF KANSAS INC.
c/o COLUMBIA/HCA
c/o THOMAS W. HULME
P.O. BOX 550
NASHVILLE, TENNESSE 37202-0550

ENGINEER: PROFESSIONAL ENGINEERING CONSULTANTS, P.A.
303 S. TOPEKA
WICHITA, KANSAS 67202



SCALE: 1"=100'
FEBRUARY, 1995

C.A.C. = COMPLETE ACCESS CONTROL

EXISTING STREET PAVEMENT

B.M. - CITY OF WICHITA DISC 48 FEET EAST AND 48 FEET NORTH
OF THE INTERSECTION OF THE CENTERLINES OF 13TH
STREET NORTH AND TYLER ROAD.
ELEV. 169.929 CITY DATUM

TOPOGRAPHY DATE: AUGUST, 1990

NOTE: CONTOUR ELEVATION DATA = M.S.L.
ELEVATIONS OF SANITARY SEWER MANHOLES
AND STORM SEWER INLETS = CITY DATUM.

RESERVE "A" SHALL BE UTILIZED FOR A STORM WATER RETENTION/
DETENTION SYSTEM, UTILITIES CONFINED TO EASEMENTS,
LANDSCAPING AND PEDESTRIAN IMPROVEMENTS.

SANITARY SEWER
S-231, S-17B, H-26S
STORM SEWER
C-71, D-26, C-117