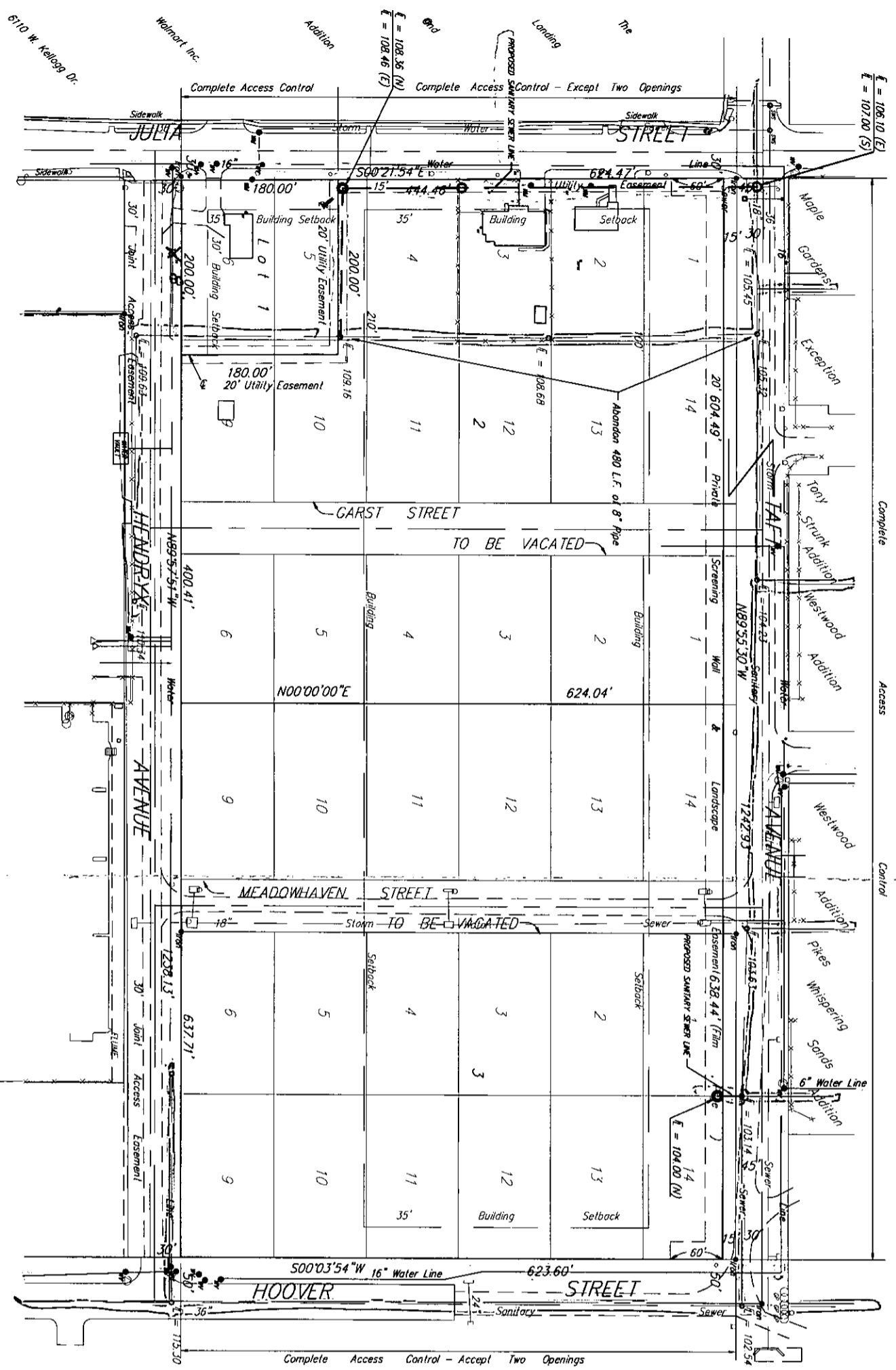



# Utility Plan

## WEST KELLOGG POWER CENTER ADDITION

### WICHITA, SEDGWICK COUNTY, KANSAS



MAILED, SWI

  
**BAUGHMAN COMPANY P. A.**  
 ENGINEERING, SURVEYING, & PLANNING  
 (316)-282-7271 • 315 ELLIS • WICHITA, KANSAS 67211  
 May 6, 1996