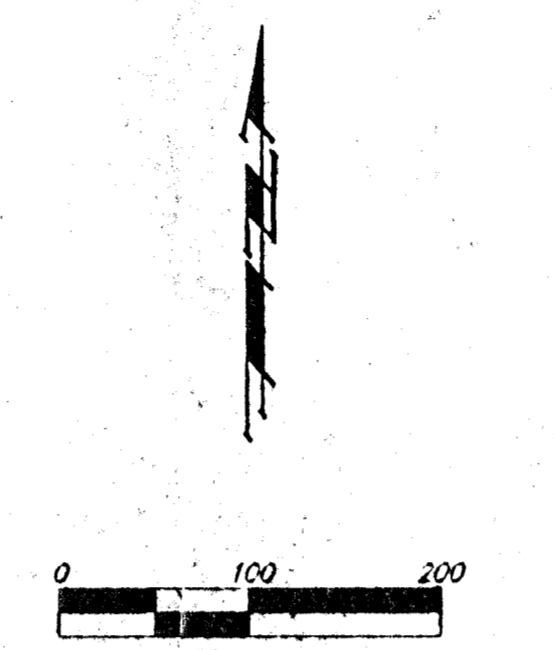
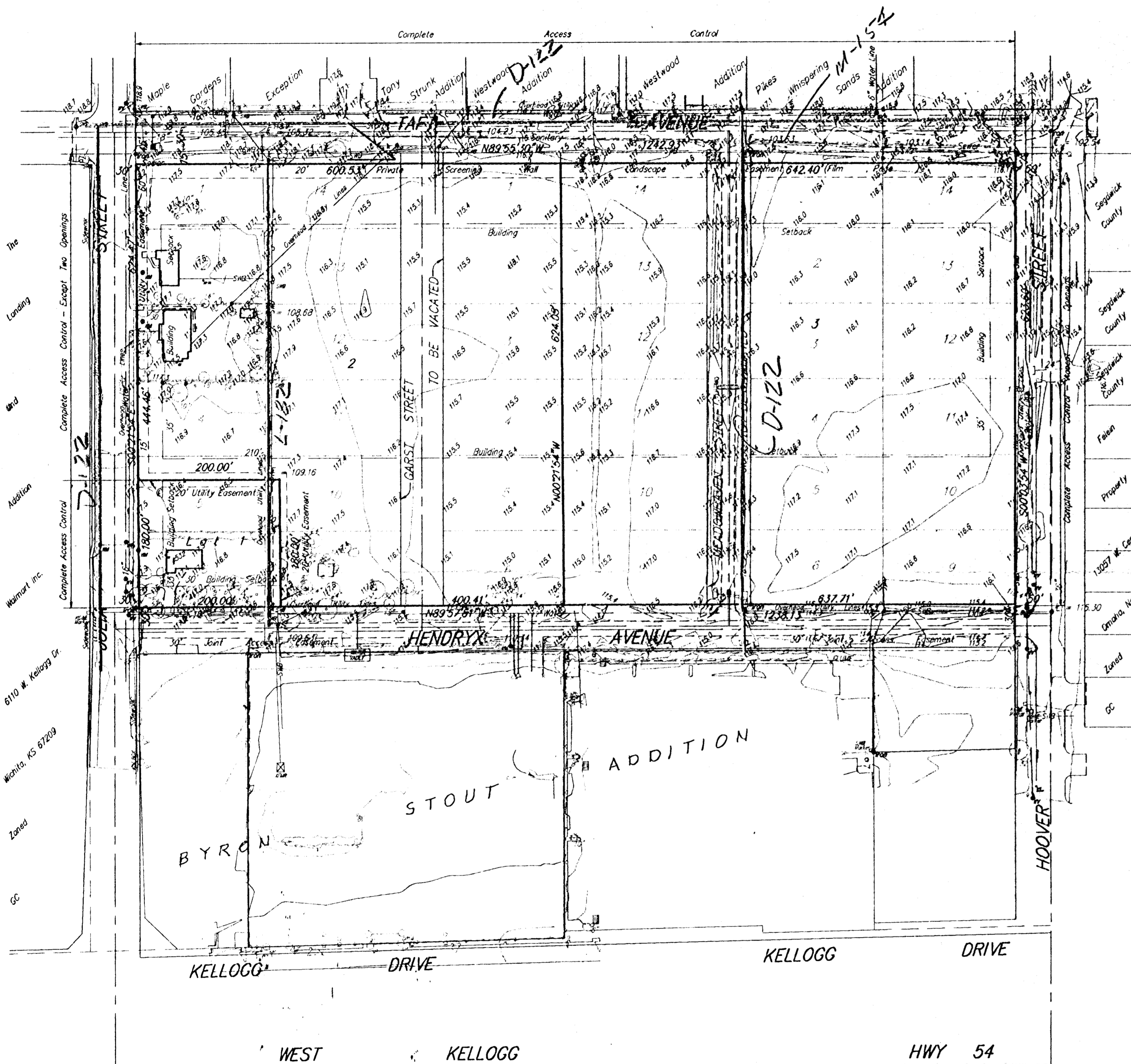


FINAL PLAT

WEST KELLOGG POWER CENTER ADDITION

WICHITA, SEDGWICK COUNTY, KANSAS



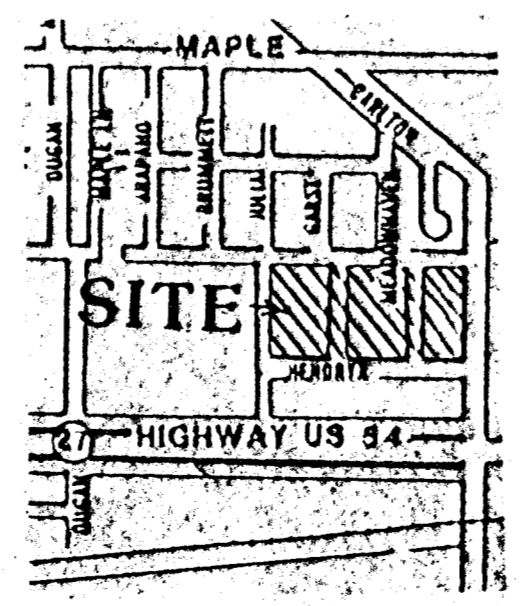
Note:
See Community Unit Plan DP-221 For Additional Building Setbacks and Information.

- = South Western Bell Marker
- = South Western Bell Box
- = K&E Marker
- = Guard Post
- = Light Pole
- = Guide Wire
- = Power Pole
- △ = Fire Stand Pipe
- △ = Fire Shutoff
- = Fire Hydrant
- = Sign
- = K&E Transformer
- = Sanitary Sewer Man Hole
- = Drop Inlet
- = ICV Box
- = Water Valve Box
- = Clean Out
- = Gas Regulator
- = Gas Tank Vent Pipe
- = Gas Filter Cap
- = Septic Tank Lid
- = Gas Test
- = Gas Meter
- = Water Meter
- = Mail Box
- = Yard Light
- = Gas Marker
- = Sanitary Sewer Man Hole

Contract Purchaser
Love Box Co. LLC.
Attn: Tim Boyd, Member
128 S. Dellrose
Wichita, Ks 67218

Benchmark
"□" I.C. East end of Return
S.E. Corner of Dugan & Taft
Elevation = 118.61

"+" Centerline of both
Hoover & Hendryx Street
Elevation = 115.77



VICINITY MAP

State of Kansas) SS We, Baughman Company, P.A., Surveyors in aforesaid County and State do hereby certify that we have surveyed and platted "WEST KELLOGG POWER CENTER ADDITION", Wichita, Sedgwick County, Kansas, and that the accompanying plat is a true and correct exhibit of the property surveyed, described as and being a replat of Lots 1, 2, 3, 4, 5, 6, 9, 10, 11, 12, 13, and 14, Block A, and Lots 1, 2, 3, 4, 5, 6, 9, 10, 11, 12, 13, and 14, Block B, and Lots 1, 2, 3, 4, 5, 6, 9, 10, 11, 12, 13, and 14, Block C, Garst Gardens, Sedgwick County, Kansas, and that part of Garst Street and Meadowhaven Street lying between said Lots.

All being situated in the NW1/4 of Sec. 27, Twp. 27-S, R-1-W of the 6th P.M., Sedgwick County, Kansas.

Existing public easements and dedications being vacated by virtue of K.S.A. 12-512(b).

Baughman Co., P.A.

Gregory F. Saverns _____ Surveyor

Know all men by these presents that we, the undersigned, have caused the land in the surveyors certificate to be platted into Lots and a Street to be known as "WEST KELLOGG POWER CENTER ADDITION", Wichita, Sedgwick County, Kansas. The utility easements are hereby granted as indicated for the construction and maintenance of all public utilities. The private screening wall easement is hereby granted as indicated for the construction and maintenance of a private screening wall and utility main lines and service lines are allowed to cross this easement. The street is hereby dedicated to and for the use of the public. All abutters rights of access to or from Taft Avenue over and across the north line Lots 2 and 3 are hereby granted to the City of Wichita, Kansas. All abutters rights of access to or from Julia Street over and across the west line of Lots 1 and 2 are hereby granted to the City of Wichita, Kansas provided, however, that said Lot 2 shall have access to Julia Street at two locations as shall be determined by the City Engineer of the City of Wichita, Kansas. All abutters rights of access to or from Hoover Street over and across the east line of Lot 3 are hereby granted to the City of Wichita, Kansas provided, however, that said Lot 3 shall have access to Hoover Street at two locations as shall be determined by the City Engineer of the City of Wichita, Kansas.

Love Box Company, LLC

Thomas Boyd _____ Member

State of Kansas) SS The foregoing instrument acknowledged before me, this _____ day of _____, 1996, by Thomas Boyd, Member, Love Box Company, LLC, on behalf of the company.

Notary Public
My App'l. Exp. _____

This plat of "WEST KELLOGG POWER CENTER ADDITION", Wichita, Sedgwick County, Kansas has been submitted to and approved by the Wichita, Sedgwick County Metropolitan Area Planning Commission, Wichita, Kansas.
Dated this _____ day of _____, 1996.
Wichita-Sedgwick County Metropolitan Area Planning Commission

Susan Osborne-Howes _____ Chairman

Marvin S. Krout _____ Secretary

This plat approved and all dedications shown hereon accepted by the City Council of the City of Wichita, Kansas, this _____ day of _____, 1996.

Bob Knight _____ Mayor

Pat Burnett _____ Deputy City Clerk

Entered on transfer record this _____ day of _____, 1996.

Susan E. Crockett-Spoon _____ County Clerk

State of Kansas) SS This is to certify that this plat has been filed for record in the office of the Register of Deeds, this _____ day of _____, 1996, at _____ o'clock _____ M., and is duly recorded.

Pat Kettler _____ Register of Deeds

Ed Resa _____ Deputy

Note:
Approximate Location of Water Lines
Not Field Verified