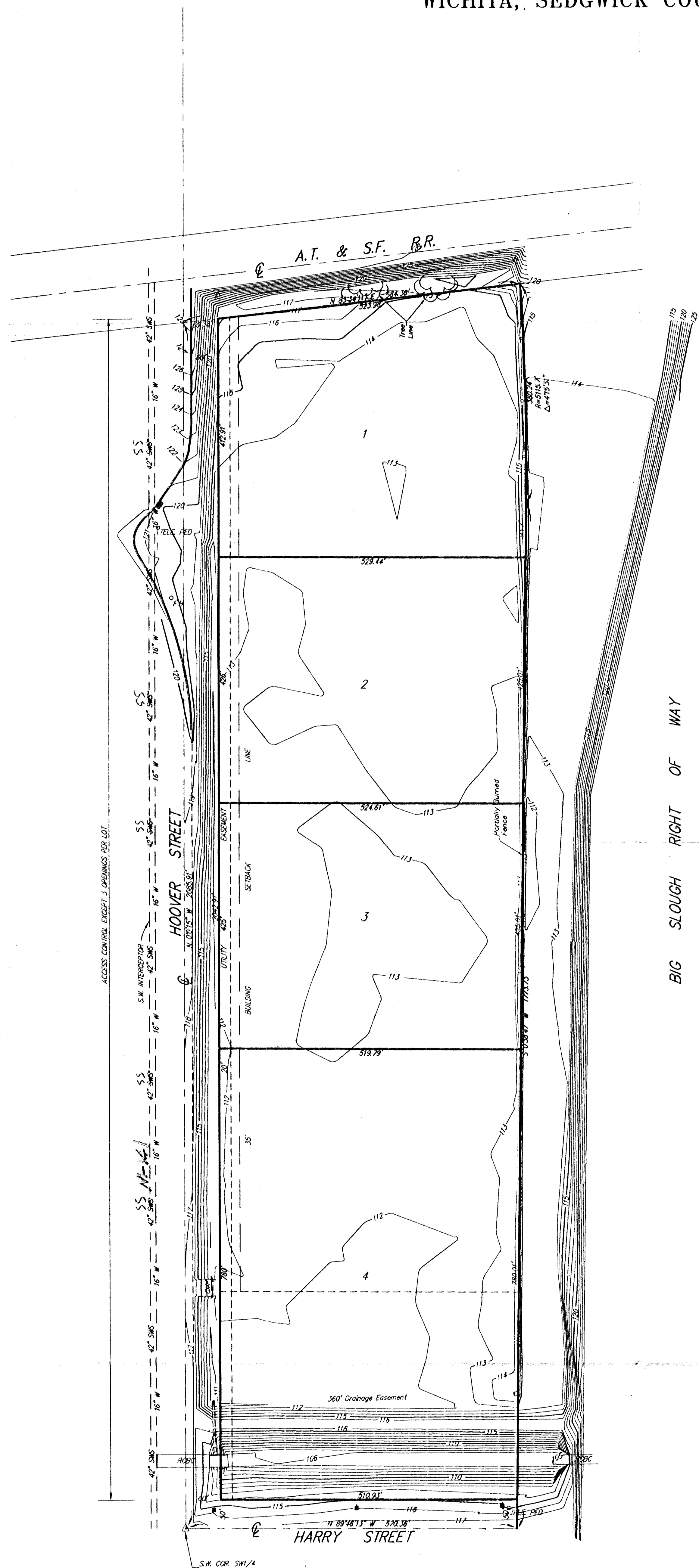


PRELIMINARY PLAT WEST TOWNE INDUSTRIAL ADDITION

WICHITA, SEDGWICK COUNTY, KANSAS



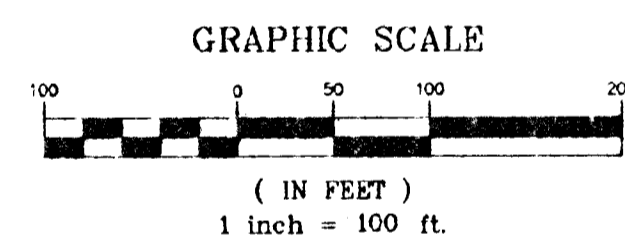
LEGAL DESCRIPTION:

That part of the W1/2 of the SW1/4 lying south of the A.T.&S.F. Railroad right-of-way except, that part taken for floodway in District Court Case A-31849, in Sec. 26, Twp. 27-S, R-1-W of the 6th P.M., Sedgwick County, Kansas.

INDUSTRIAL ASSETS, L.L.C.
 RANDY VOITH
 229 E. WILLIAM, 5TH FLOOR
 WICHITA, KS 67202
 PH (316) 264-3700

GROSS SIZE:
 1,233,236 Sq. Ft. ±
 28.31 Acres ±

NET SIZE:
 1,082,399 Sq. Ft. ±
 24.85 Acres ±



TOPOGRAPHY = CITY DATUM
 S.E. ANDERSON, MARCH 97

BENCH MARK: CITY OF WICHITA DISC
 N. END OF W. HEADWALL OF R.C.B.C.
 100 FT. N. OF INTERSECTION HARRY &
 HOOVER.
 ELEV. = 114.26 (CITY DATUM)

WEST TOWNE INDUSTRIAL ADDITION

