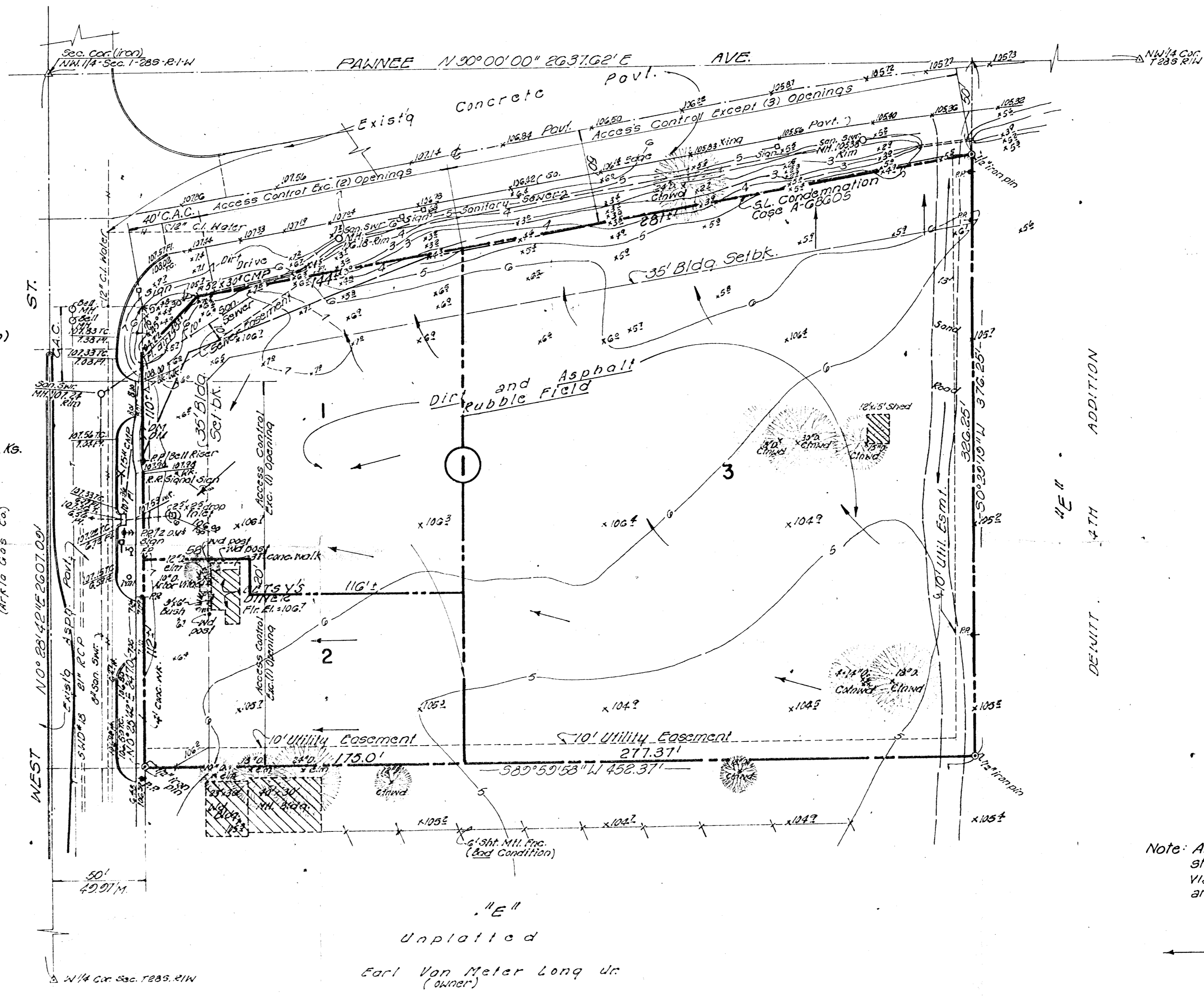
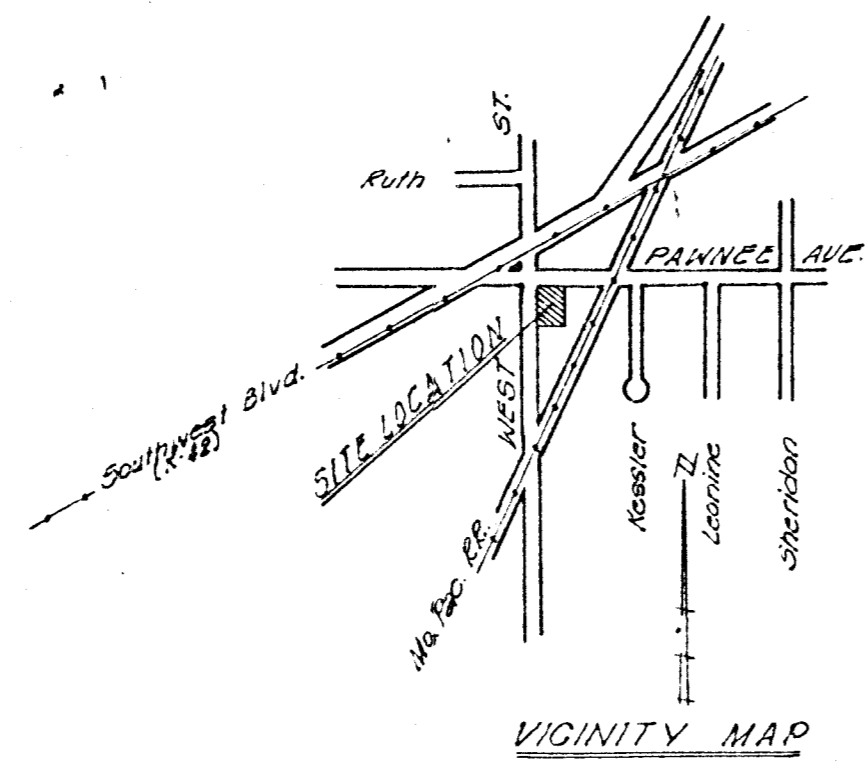


FHWA REGION NO.	STATE	PROJECT NO.	FISCAL YEAR	SHEET NO.	TOTAL SHEETS
7	KANSAS		19		

Scale: 1"=40'
 B.M. 109.98 City Std. & West St.
 & 24.8' N. of N. Rail Santa
 Fe Railroad (City Datum)
 Topp. Dec. 3, 1982

Note: All Utilities are existing

Owner: Earl Van Meter Long Jr. Wichita, Ks.
 Subdivider: Phil Ruffin Wichita, Ks.
 Engineer: Professional Engineering
 Consultants, P.A.
 1440 E. English
 Wichita, Ks. 67211



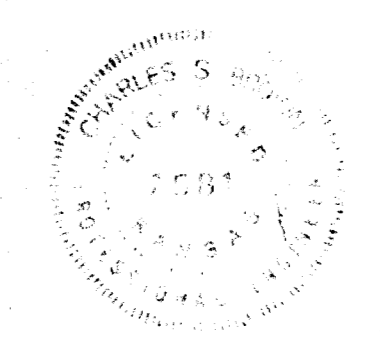
Note: All lots shall be graded to drain to streets, gutters, or existing storm sewers via drives, flumes, private storm sewers and/or other approved drainage facilities.

← = Drainage Flow Direction

January 4, 1983

DRAINAGE CONCEPT / PLAN

WESTPORT INDUSTRIAL PARK 5TH ADDITION



PROFESSIONAL ENGINEERING CONSULTANTS, P.A. ENGINEERS WICHITA, KANSAS		
Designed by	Checked by	Job No.
Drawn by	Date	