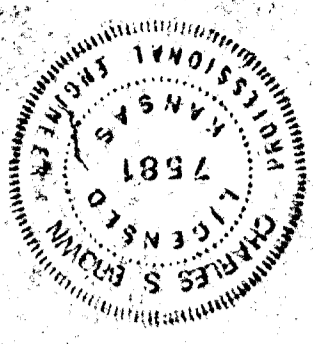


#19
 Drawn by: _____
 Checked by: _____
 Date: _____
 Design by: _____
 PROFESSIONAL ENGINEERING CONSULTANTS, P.A.
 ENGINEERS
 WICHITA, KANSAS



WESTPORT INDUSTRIAL PARK 5TH ADDITION

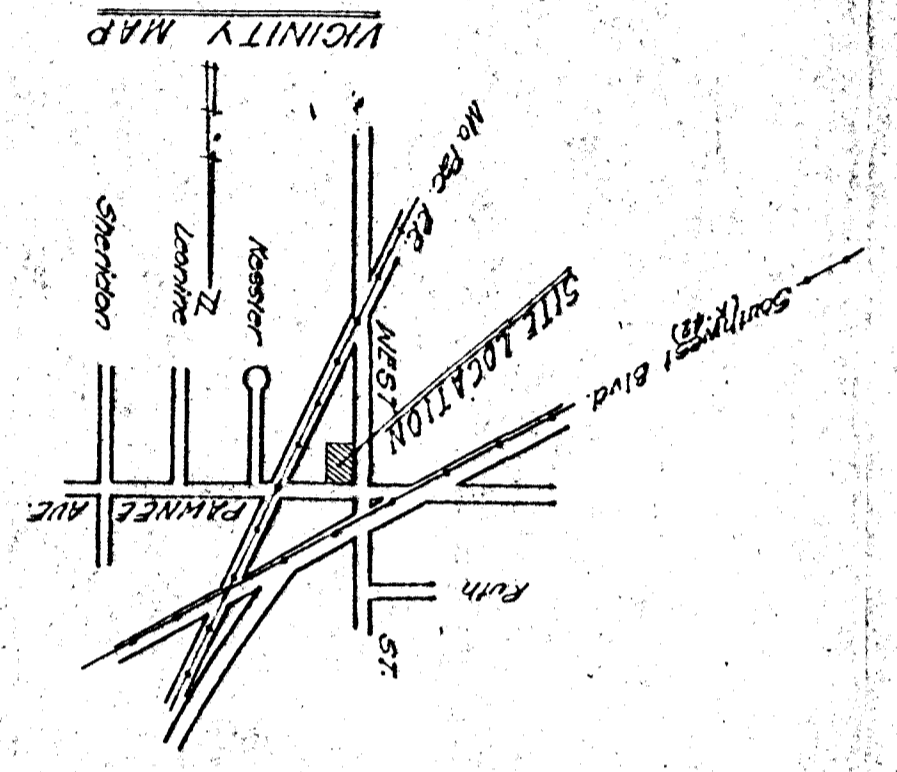
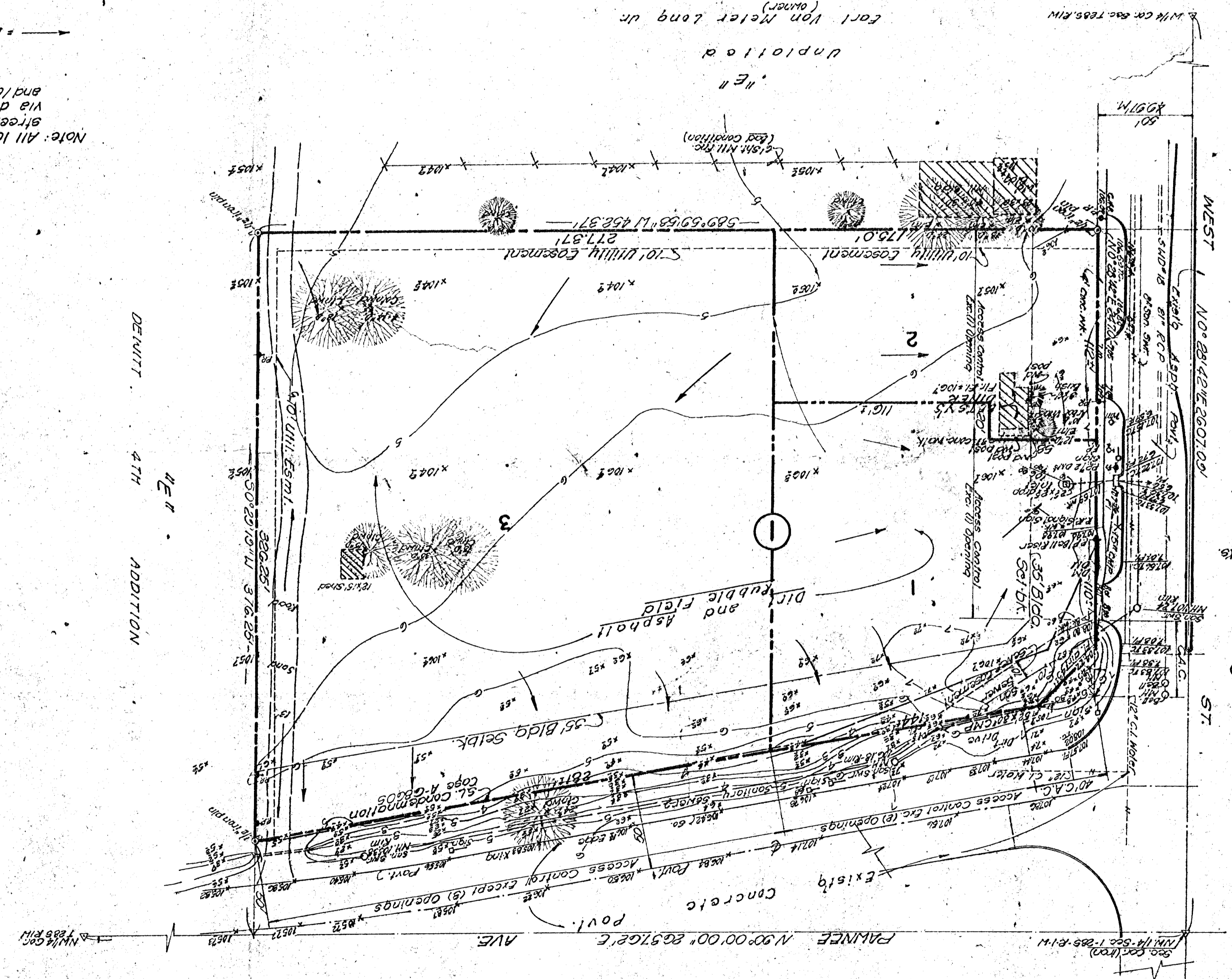
DRAINAGE CONCEPT / PLAN

January 4, 1983

Revised Feb. 16, 1983

Note: All lots shall be graded to drain to streets, gutters, or existing storm sewers and/or other approved drainage facilities.

→ = Drainage Flow Direction



Director: Carl Von Meter Long, Wichita, KS
 Subdivisor: Phil Ruffin, Wichita, KS
 Engineer: Professional Engineering
 1440 E. English
 Wichita, KS 67211

Note: All utilities are existing

Scale: 1"=40'
 BM 103.28 City St. & West St.
 E 248 N. of Nicolli Sonto
 Fe. Kollrod (City Datum)
 Topo. Dec. 5, 1982



STATE	KANSAS
PROJECT NO.	7
FISCAL YEAR	
SHEET NO.	
TOTAL SHEETS	