

REGION NO.	7
STATE	KANSAS
PROJECT NO.	19
FISCAL YEAR	
SHEET NO.	
TOTAL SHEETS	

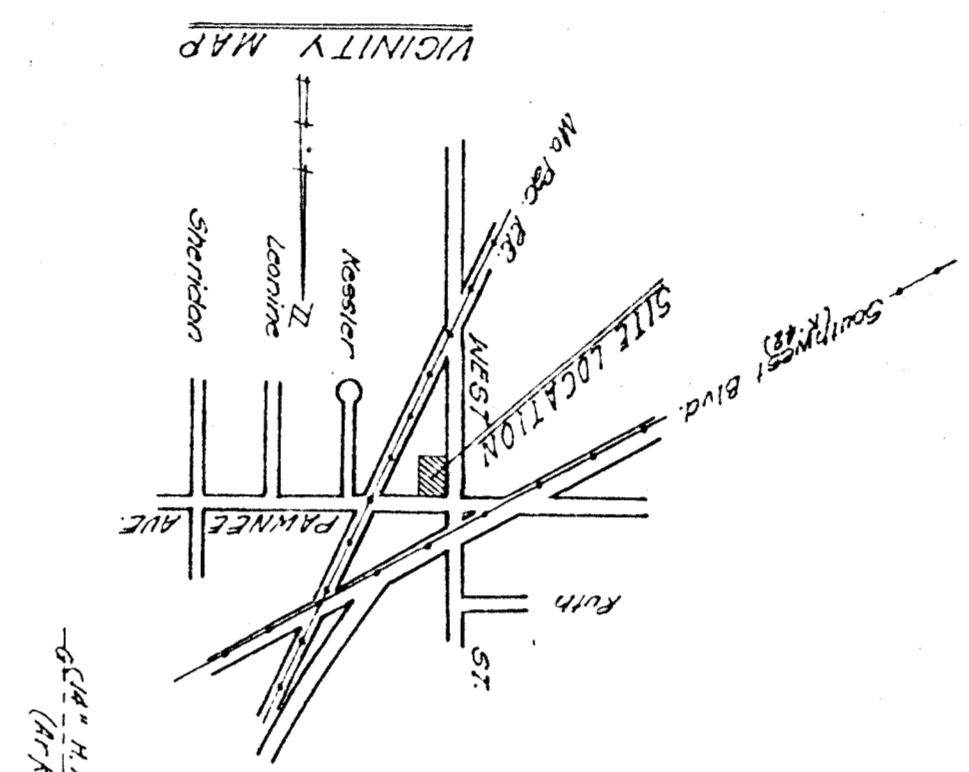
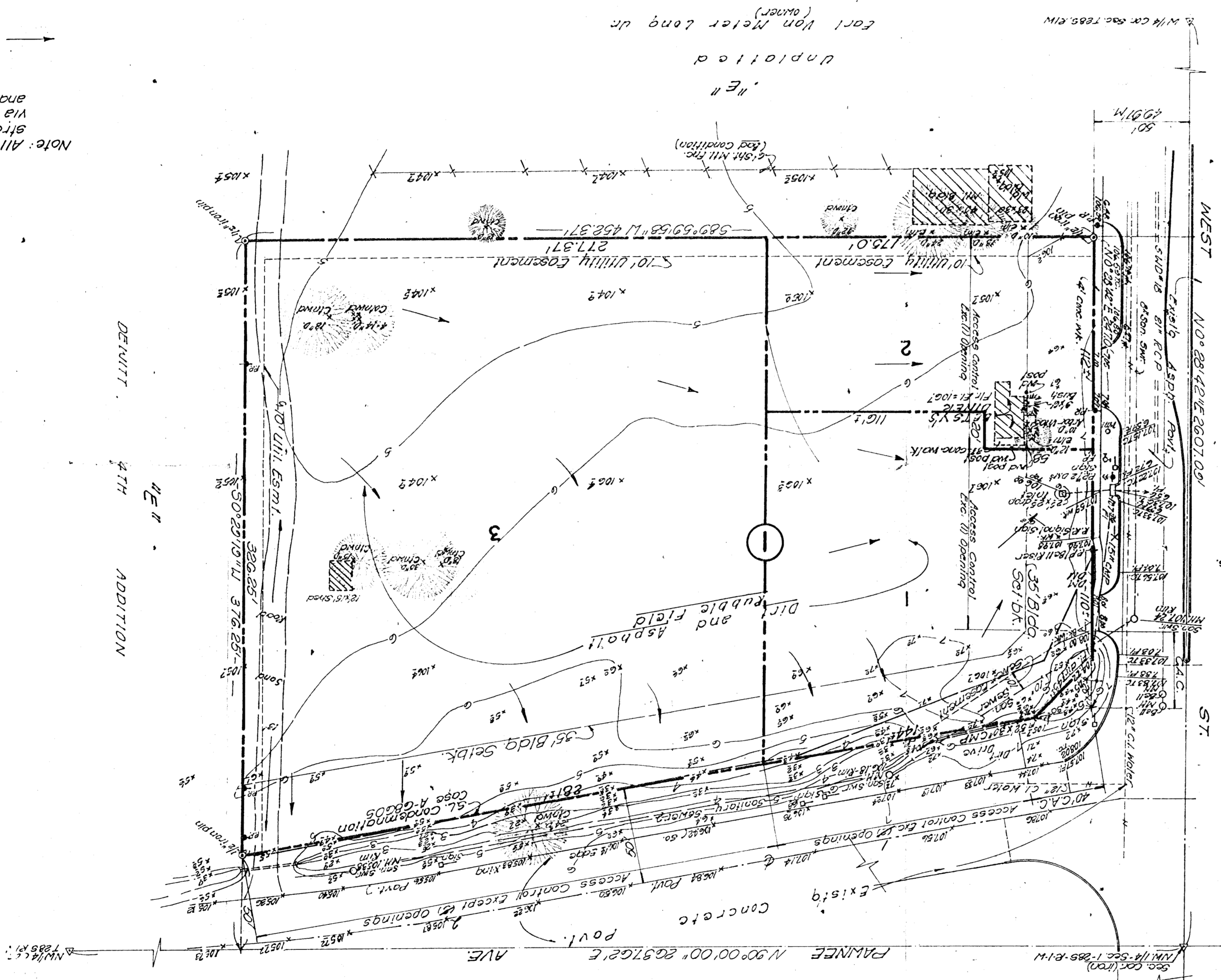
Drawn by	Checked by	Job No.
Designed by		
PROFESSIONAL ENGINEERING CONSULTANTS, P.A. ENGINEERS WICHITA, KANSAS		



WESTPORT INDUSTRIAL PARK 5TH ADDITION

DRAINAGE CONCEPT / PLAN
January 4, 1983

Note: All lots shall be graded to drain to streets, gutters, or existing storm sewers via drives, flumes, private storm sewers and/or other approved drainage facilities.
 → = Drainage flow direction



Scale: 1" = 40'
 BM 109.98 City Sid. & West St.
 #248 N. of N. 10th St. (City datum)
 Fe Railroad (City datum)
 Tapp. Dec. 3, 1982
 Note: All Utilities are existing
 Designer: Carl Van Meter Long Upr. Wichita, Ka.
 Subdivider: Phil Kuffin-Wichita, Ka.
 Engineer: Professional Engineering
 Consultants, P.A.
 1440 E. English
 Wichita, Ka. 67211
 -C&E- H.B. 098
 (H/10-008-C&E)

