

Wade B. B.
J. H.

NO. 015806-0174
SEC. 13, TWP. 27S. R. 2W

DRAINAGE CONCEPT

**WESTSIDE ASSEMBLY
CHAPEL ADDITION**

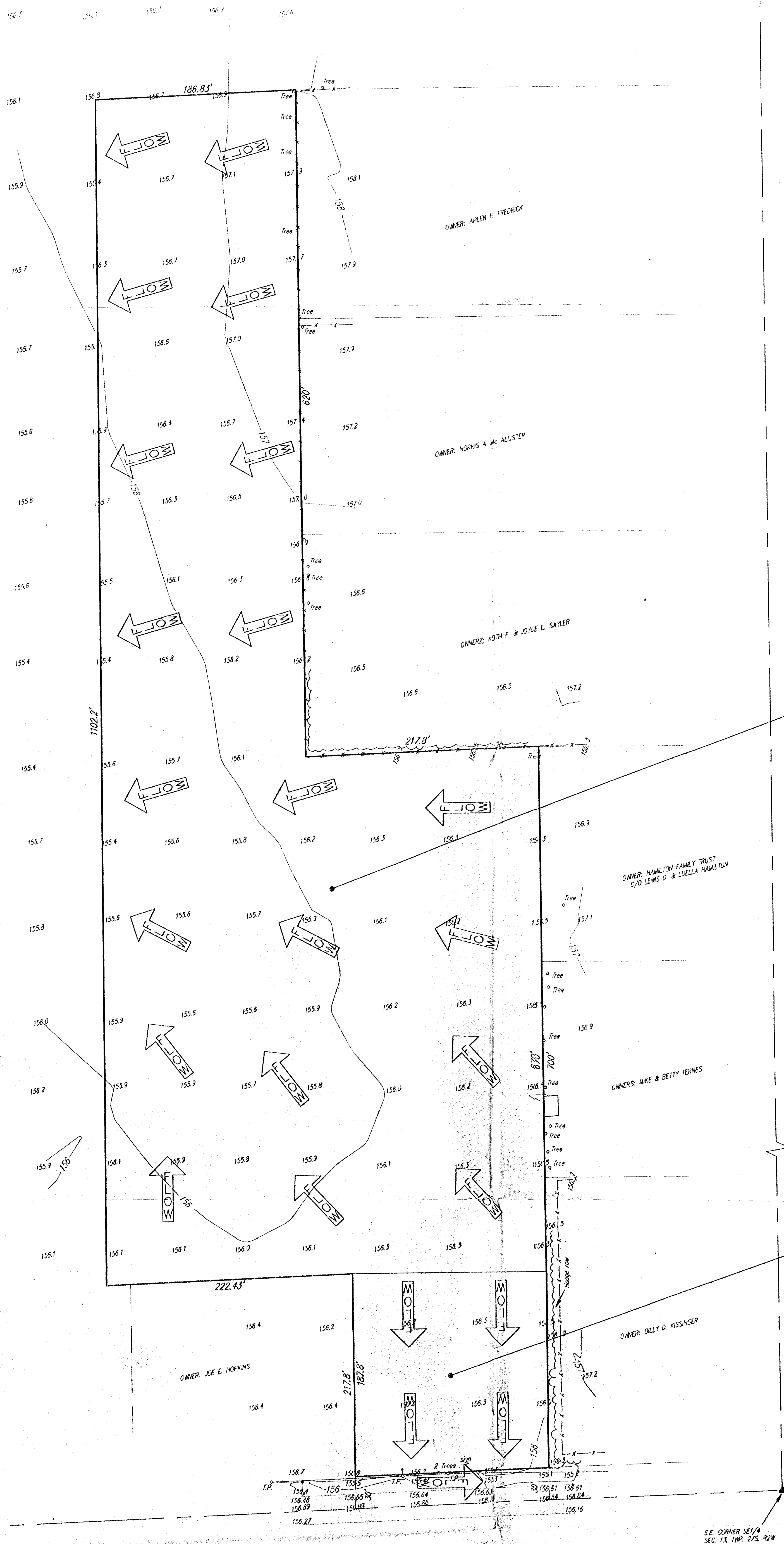
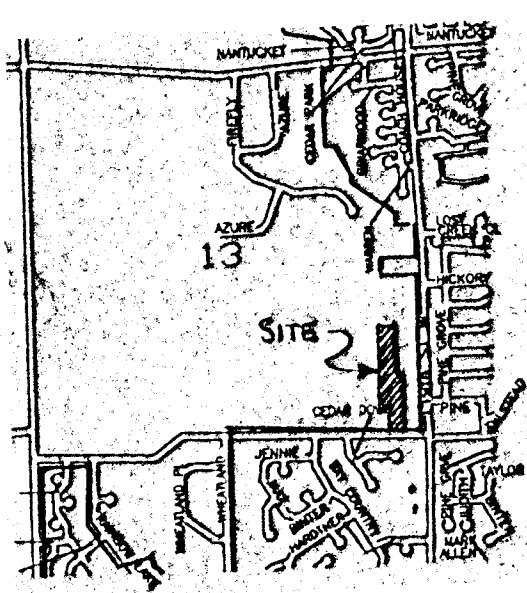
SEDGWICK COUNTY, KANSAS

LEGAL DESCRIPTION:

Commencing at the S.E. Corner of the SE1/4 of Sec. 13, Twp. 27S, R-2-W of the 6th P.M., Sedgwick County, Kansas; thence west on the south line of said SE1/4, 217.8 feet for a place of beginning; thence north parallel with the east line of said SE1/4, 700 feet; thence west parallel with the south line of said SE1/4, 217.8 feet; thence north parallel with the east line of said SE1/4, 620 feet; thence west parallel with the south line of said SE1/4, 1102.2 feet; thence south parallel with the east line of said SE1/4, 222.43 feet; thence east parallel with the south line of said SE1/4, 217.8 feet; thence south parallel with the east line of said SE1/4, 182.2 feet to the place of beginning.

OWNER:

South Emporia Bible Chapel, Inc.
Arnold L. Birkle, Trustee
2102 S. Emporia
Wichita, Ks. 67211



DRAINAGE AREA = 7.25
C = 0.9
Q₅ = 29.7 cfs
Q₁₀₀ = 48.1 cfs

DRAINAGE AREA = 0.77
C = 0.9
Q₅ = 3.2 cfs
Q₁₀₀ = 5.1 cfs

To: Jim Weber
Westside Bible
Chapel Addition
Drainage Concept

S.W. CORNER SE1/4
SEC. 13, TWP. 27S, R. 2W

S.E. CORNER SE1/4
SEC. 13, TWP. 27S, R. 2W

JULY 5, 1994