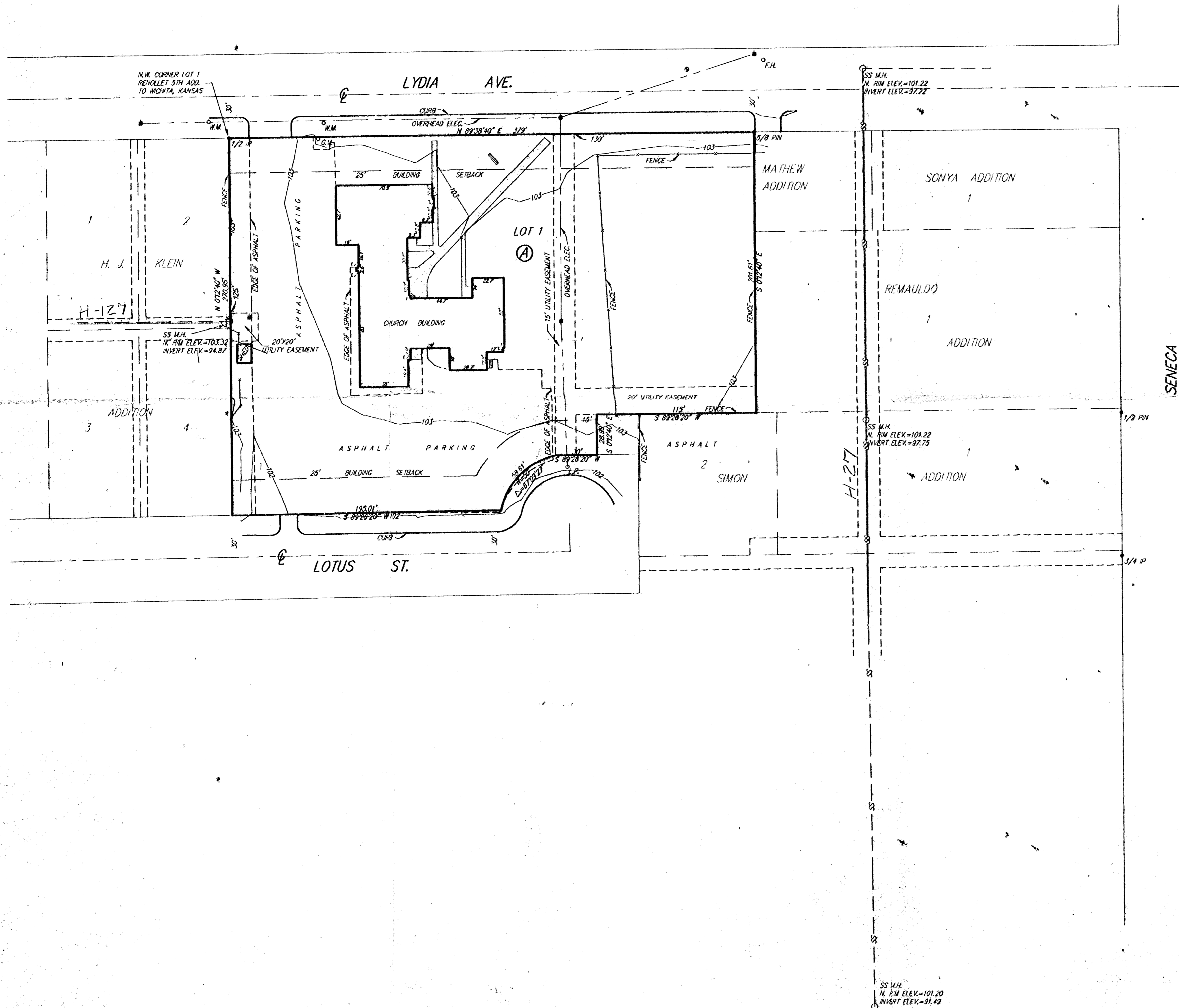


# SKETCH PLAT WESTSIDE UNITED METHODIST CHURCH ADDITION

WICHITA, SEDGWICK COUNTY, KANSAS



**LEGAL DESCRIPTION:**

Lots 1, 2, 3, 4, 5, 6, 7 and 8, except that part of Lot 5 dedicated for street purposes, in Renollet 5th Addition to Wichita, Kansas, Sedgwick County, Kansas, together with that portion of the West 30 feet of Exposition Avenue adjoining said Lots 4 and 5 on the East as vacated on Film 320, Page 1468, and the West 1/2 of Lot 1, Block 1, Matthew Addition, Wichita, Kansas, Sedgwick County, Kansas, together with the East 30 feet of Exposition Avenue adjoining on the West as vacated on Film 320, Page 1468, and the West 115 feet of a tract beginning 1088 feet North of the S.E. Corner of the SE1/4 of Section 31, Twp. 27-S, R-1-E of the 6th P.M., Sedgwick County, Kansas; thence West 26 rods; thence North 130 feet; thence East 26 rods; thence South 130 feet to the point of beginning.

**NET SIZE:**

92,369.19 Sq. Ft. ±  
2.12 Acres ±

WESTSIDE METHODIST CHURCH  
ROBERT BROCKERT, CHAIRMAN OF TRUSTEES  
1313 LYDIA  
WICHITA, KANSAS 67213

PH. 265-2777



1" = 40'  
ELEVATION = CITY DATUM

BENCH MARK: "□" CUT TOP OF CURB  
W. CURB RETURN @ N.W. COR. LYDIA & RITA  
ELEV.=102.22 (CITY DATUM)