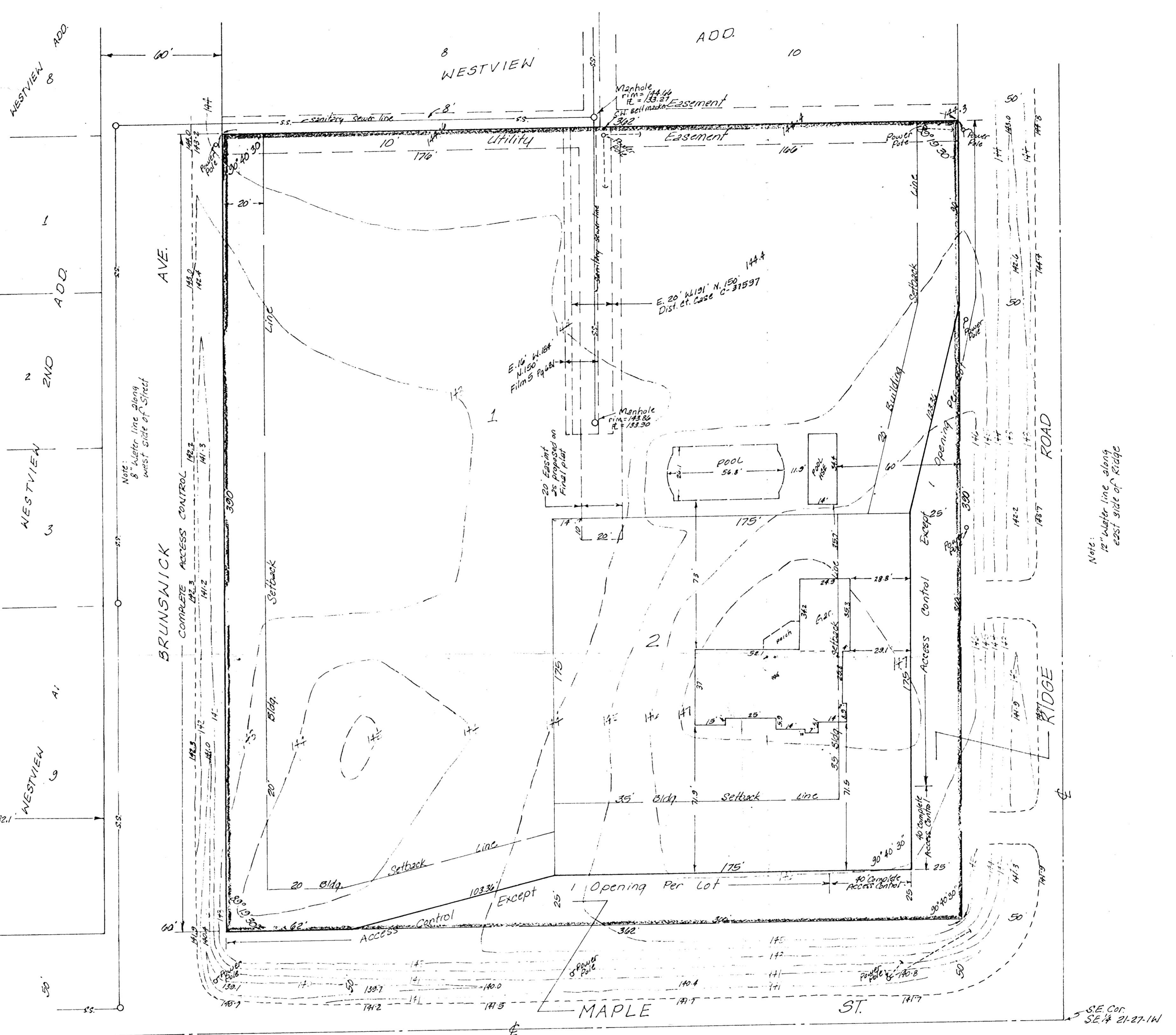
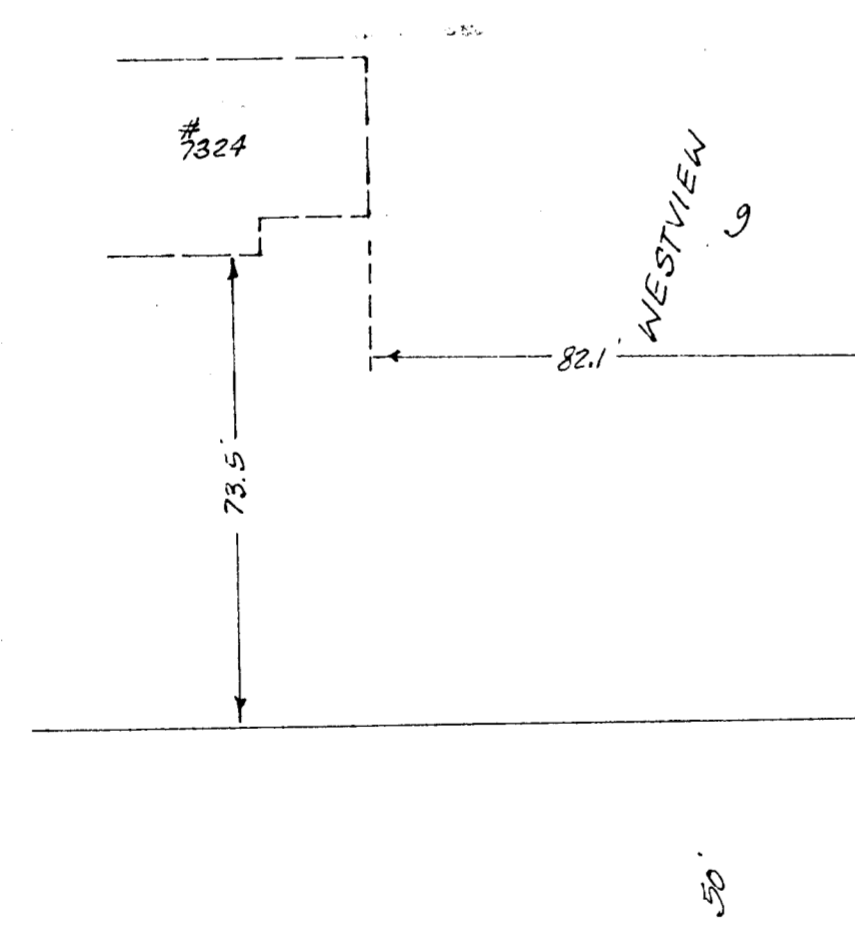


Bench mark:
 Railroad spike in north side
 of Power Pole at the S.E. corner
 of Maple & Ridge
 Elevation = 142.54 City Datum



SKETCH PLAT
 WESTVIEW 3RD ADDITION

LOT 9, BLOCK C, WESTVIEW ADDITION,
 SEDGWICK COUNTY, KANSAS,

OWNER: DOROTHY TUCKER
 % DENNIS NIEDENS