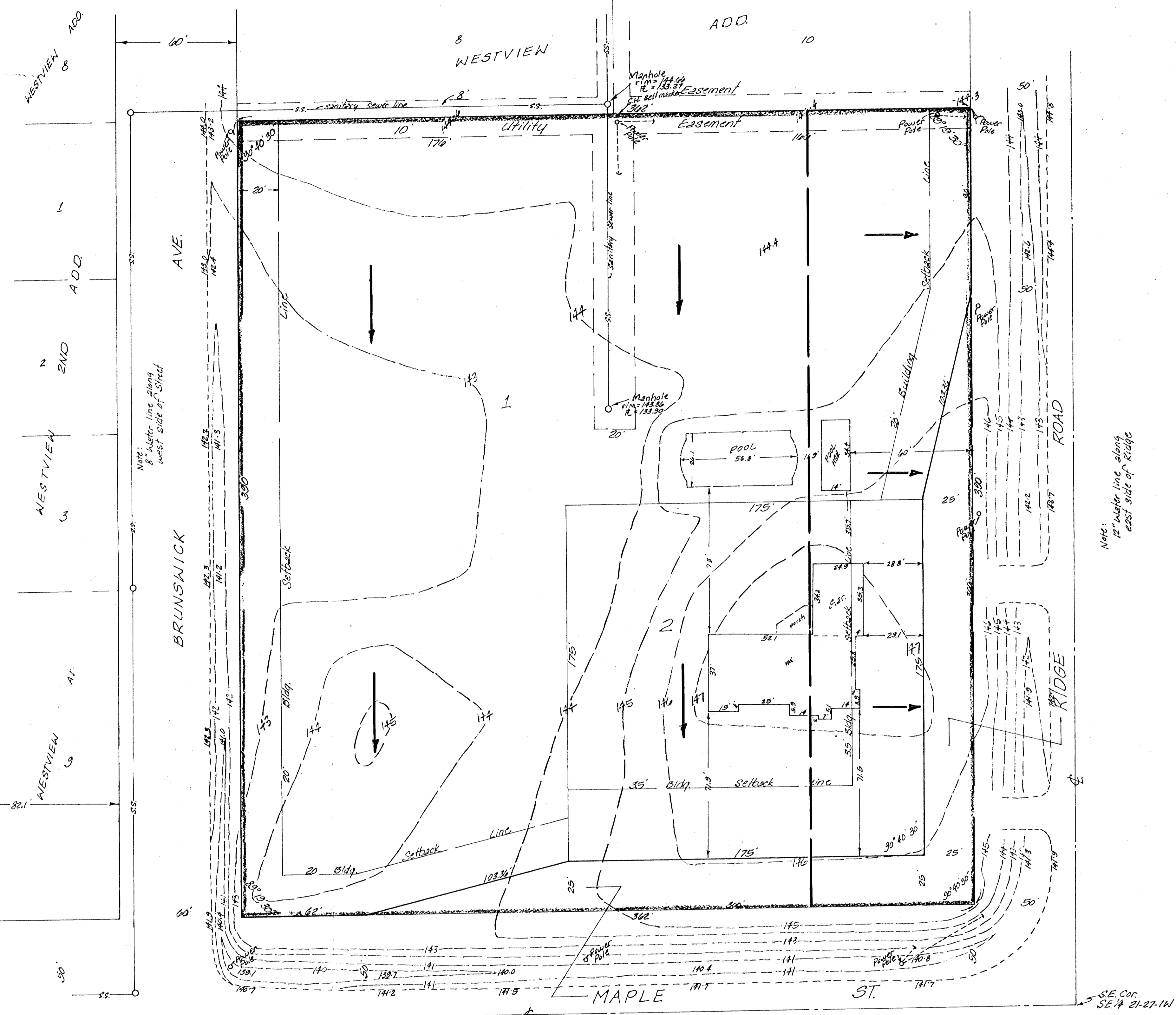
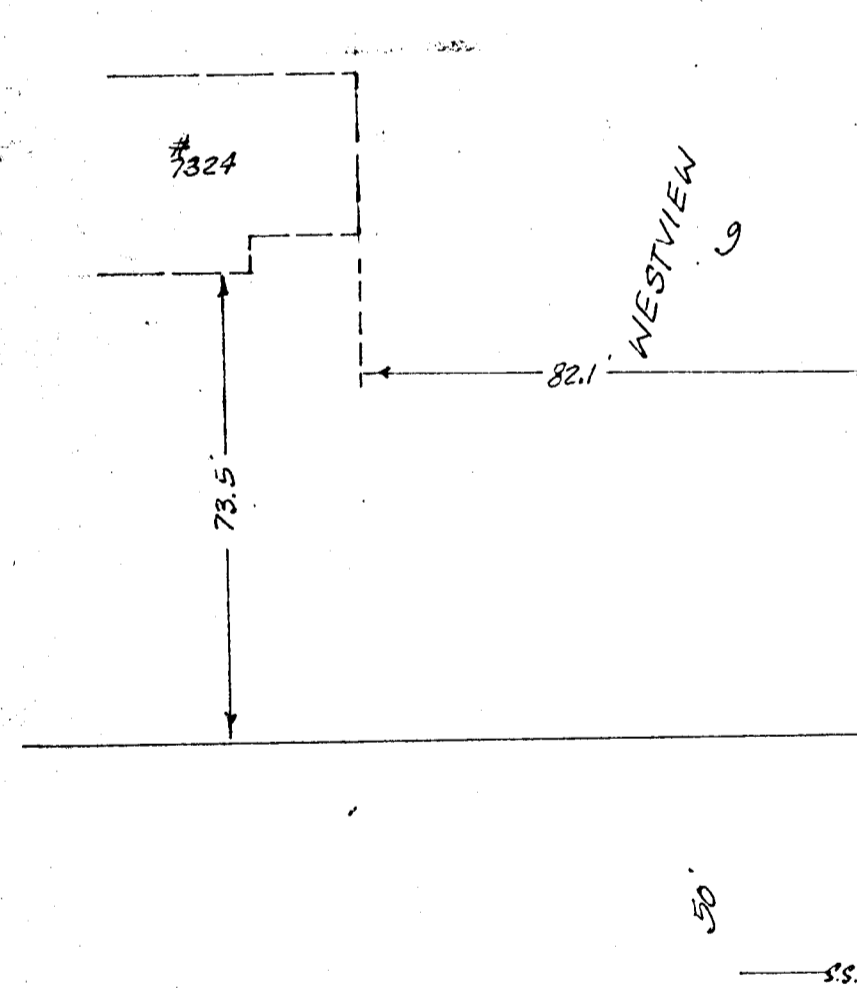


Bench mark:  
 Railroad spike in north side  
 of Power Pole at the S.E. corner  
 of Maple & Ridge  
 Elevation = 142.54 City Datum



SKETCH PLAT  
**WESTVIEW 3RD ADDITION**

LOT 9, BLOCK C, WESTVIEW ADDITION,  
 SEDGWICK COUNTY, KANSAS.

OWNER: DOROTHY TUCKER  
 % DENNIS NIEDENS

The east 80 ft. to drain to  
 Ridge & the west 282 ft. to  
 drain to Maple, via drives,  
 flumes, inlets, or other  
 approved methods