

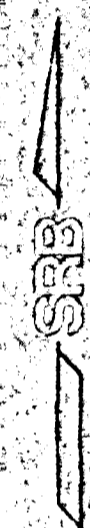
PRELIMINARY PLAT PAWNEE AND WEST INDUSTRIAL PARK

WICHITA, SEDGWICK COUNTY, KANSAS

THE E 1/2 OF THE S 1/2 OF THE SE 1/4 OF SEC. 35, TWP. 27-S,
R-1-W OF THE 6TH P.M., SEDGWICK COUNTY, KANSAS, EXCEPT
EXISTING STREET, ROAD AND HIGHWAY RIGHT-OF-WAY.

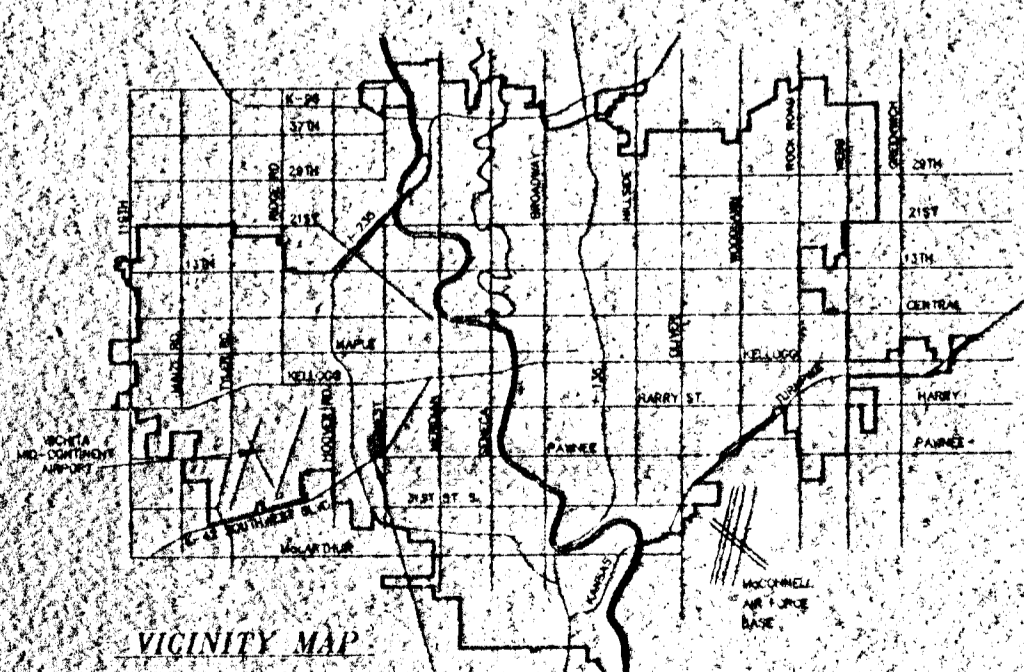
JOHN DUGAN
ROUTE 1, BOX 37
CLEARWATER, KS 67026

PH 794-2133

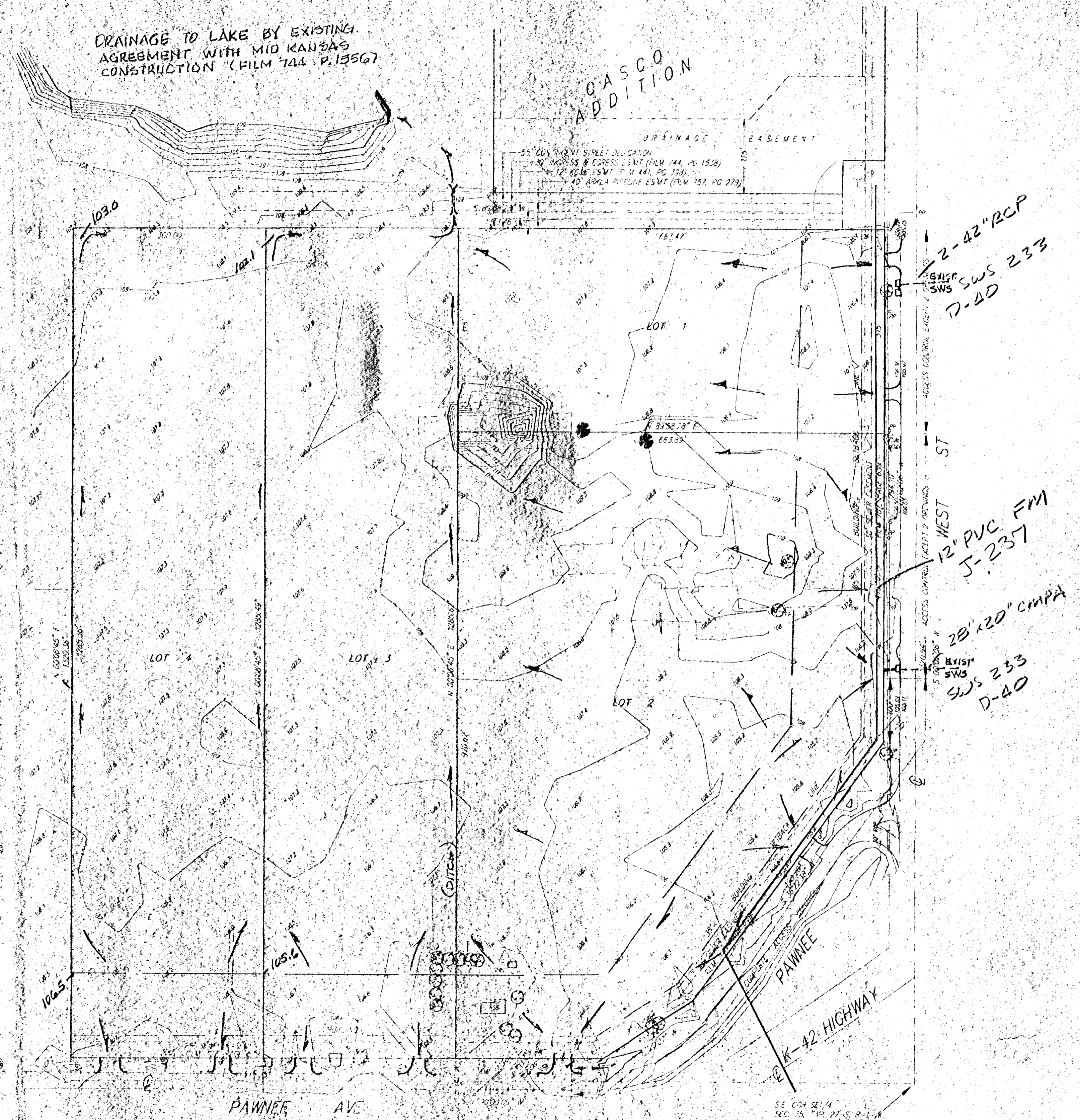


1" = 20'
ELEV. = CITY DATUM
DWG. REF. 2193-SAB
PROJECT NO. 92-5027P

UNPLATTED



PAWNEE AND WEST
INDUSTRIAL PARK



DRAINAGE CONCEPT

SRB 841 SOUTH HILLS DR. 316-657-7551
WICHITA, KANSAS 67211 FAX 657-7955
SAVOY, RUGGLES & BOHM, P.A.
ENGINEERING & SURVEYING

10 FEB 94

Revised 2/1/94