

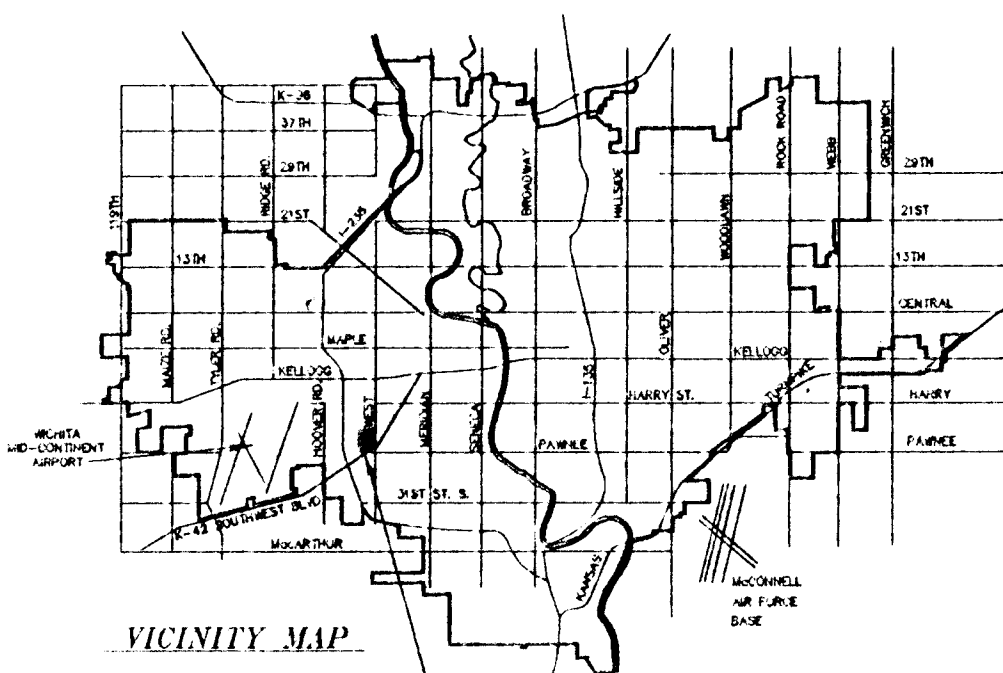
PRELIMINARY PLAT PAWNEE AND WEST INDUSTRIAL PARK

WICHITA, SEDGWICK COUNTY, KANSAS

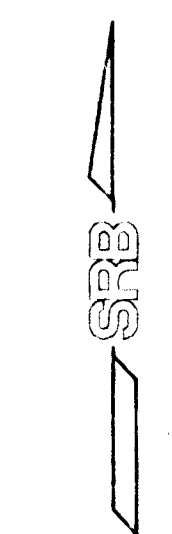
THE E1/2 OF THE S1/2 OF THE SE1/4 OF SEC. 35, TWP. 27-S,
R-1-W OF THE 6TH P.M., SEDGWICK COUNTY, KANSAS, EXCEPT
EXISTING STREET, ROAD AND HIGHWAY RIGHT-OF-WAY.

JOHN DUGAN
ROUTE 1, BOX 37
CLEARWATER, KS 67026

PH 794-2133

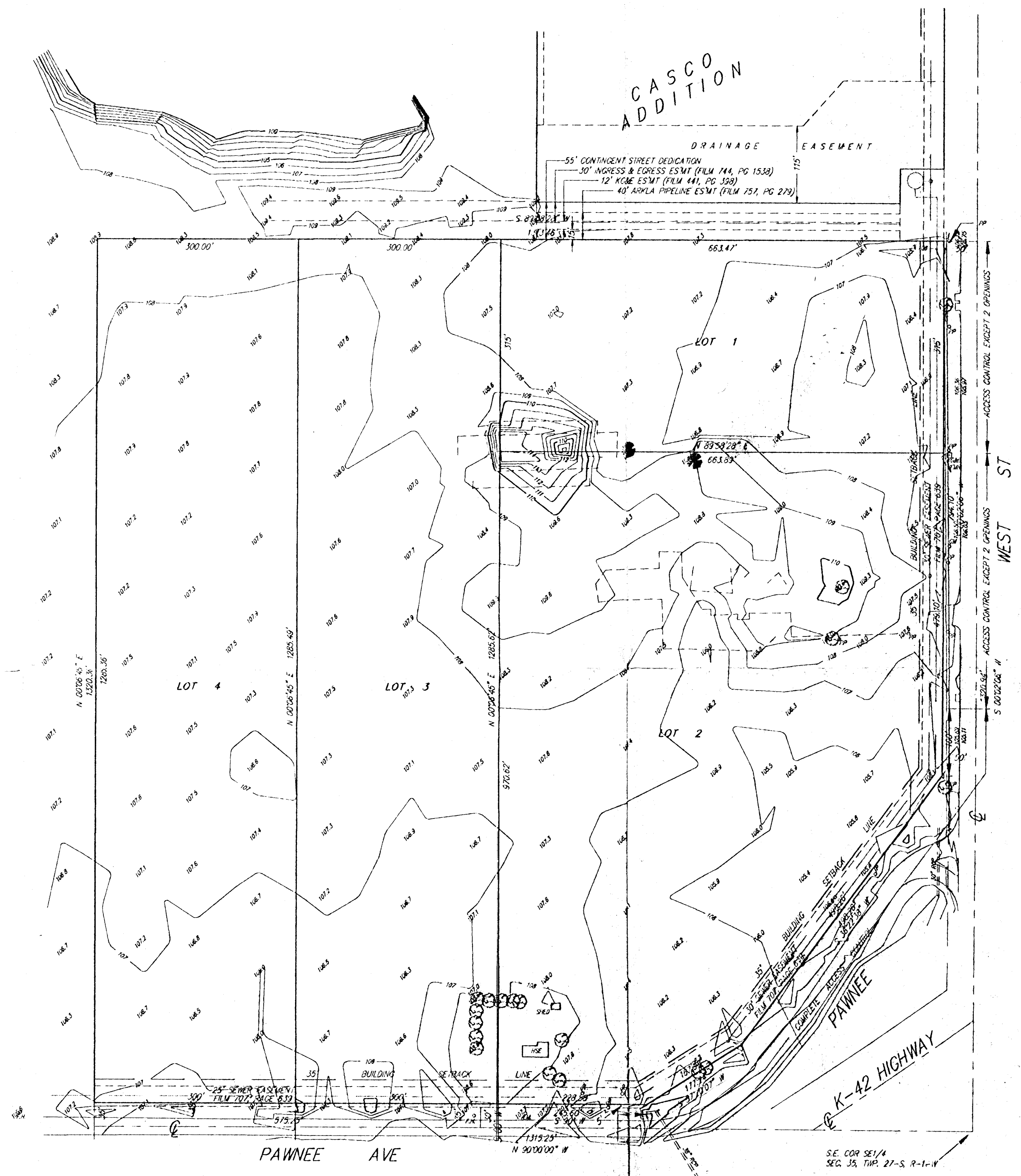


PAWNEE AND WEST
INDUSTRIAL PARK



1" = 200'
ELEV. = CITY DATUM
DWG FILE: 21P3-S.A.M.
PROJECT NO. 921.00021P

UNPLATTED



SRB 841 SOUTH HILLSIDE 316-652-7754
WICHITA, KANSAS 67211 FAX 652-7932
SAVOY, RUGGLES & BOHM, P. A.
ENGINEERING & SURVEYING

10 FEB 94