

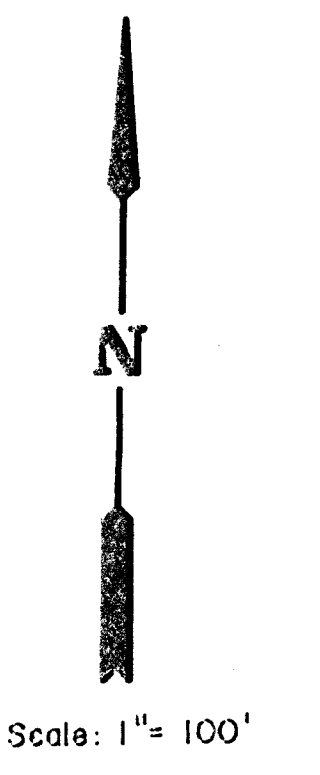
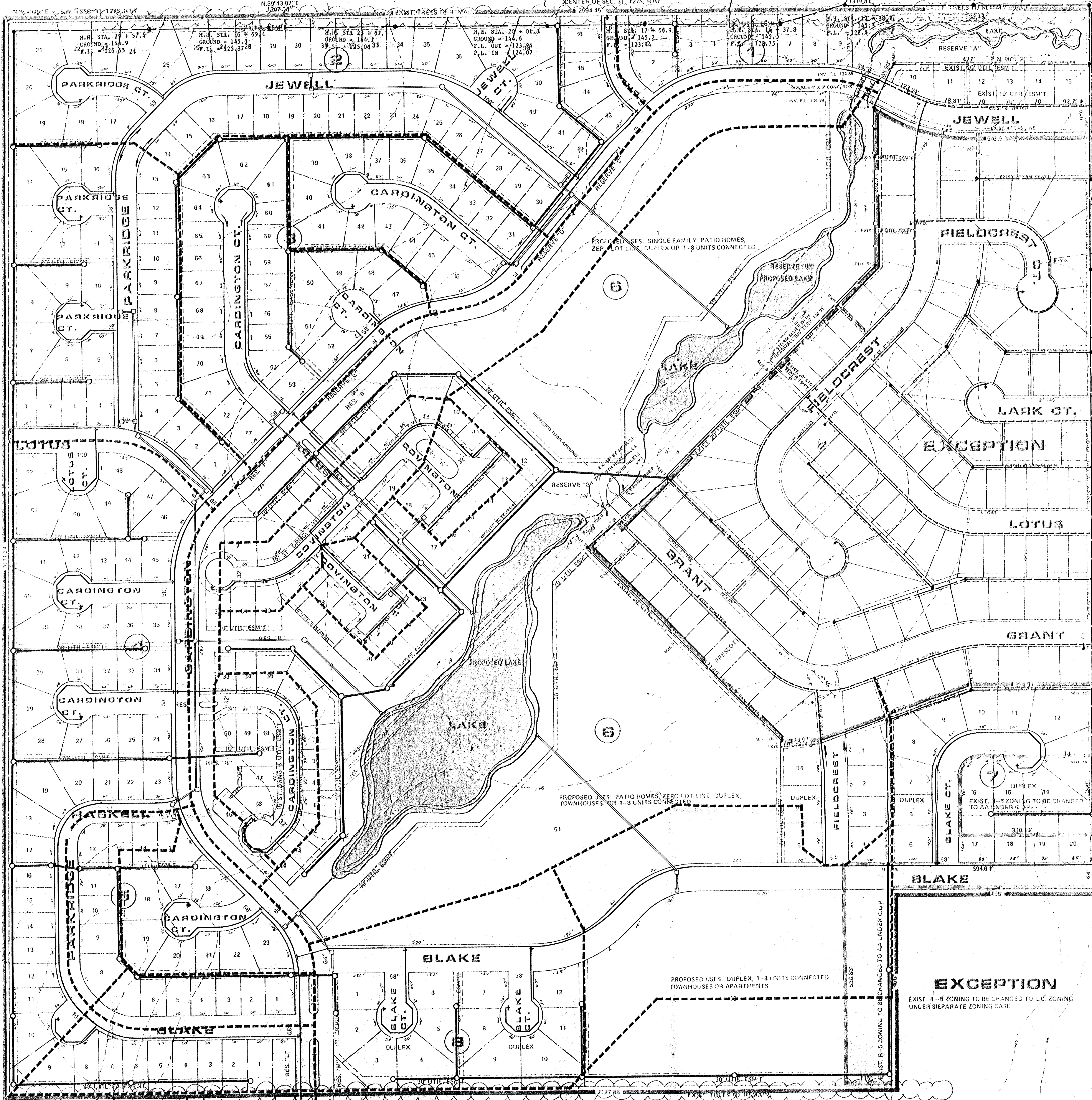
SANTA FE LAND IMPROVEMENT CO. INC.  
 1000 PARKLANE  
 900 POLK ST.  
 AMARILLO, TX ZONED AA

BUILDERS DEVELOPMENT INC.  
 1000 PARKLANE  
 WICHITA, KS  
 ZONED AA

M.H. STA. 9 + 82.3  
 GROUND = 145.1  
 F.L. = 121.8

M.H. STA. 7 + 03.2  
 GROUND = 141.1  
 F.L. = 121.06  
 F.L. IN = 121.21

M.H. STA. 32 + 80.5  
 GROUND = 144.8  
 F.L. = 127.52



- LEGEND**
- = Exist. Water Line
  - = Prop. Water Line
  - = Exist. San. Sew.
  - = Prop. San. Sew.

STORM & SHIELD E10K  
 3/1/04  
 WICHITA, KS  
 WICHITA, KS  
 WICHITA, KS

**EX. MANHOLES**

M.H.	GRND. F.L.	DEPTH
M.H. 1	143.7	122.40
M.H. 2	142.8	123.49
M.H. 3	145.1	124.29
M.H. 4	145.1	124.75
M.H. 5	142.4	126.39
M.H. 6	142.6	127.99
M.H. 7	142.8	129.19
M.H. 8	143.0	130.39
M.H. 9	143.5	131.79
M.H. 10	144.4	132.59
M.H. 11	143.6	130.62
M.H. 12	143.2	129.42
M.H. 13	143.1	128.40
M.H. 14	143.3	131.26
M.H. 15	143.7	131.92

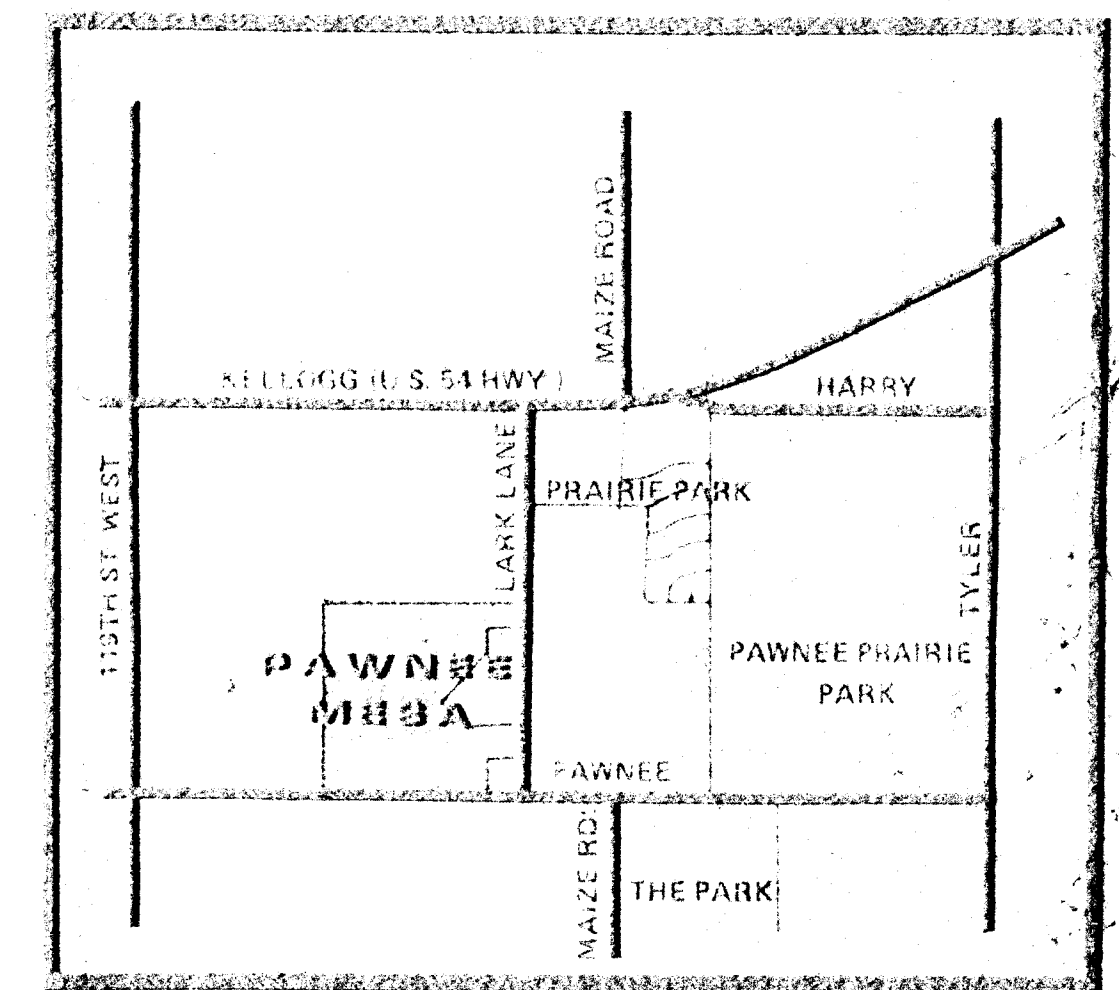
JOSEPH N. WEBER JR.  
 116 S. 10TH ST. WEST  
 WICHITA, KS 67207  
 ZONED A

RESERVES "A" AND "B" FOR DRAINAGE UTILITIES, LANDSCAPING OPEN SPACE RELATED RECREATIONAL FACILITIES AND CONSTRUCTION OF LAKES AND DRAINAGE STRUCTURES IN ADDITION, RESERVE "B" ALLOWS FOR THE CONSTRUCTION OF A PROPOSED TURNAROUND AT THE END OF GRANT STREET AND PROJECT MONUMENTS.

RESERVES "C" THROUGH "M" FOR DRAINAGE UTILITIES, STREETS, LANDSCAPING AND IRRIGATION SYSTEMS. IN ADDITION, RESERVES "L" AND "N" MAY PERMIT CONSTRUCTION OF PROJECT ENTRY MONUMENTS.

DRAINAGE CONCEPT PLAN TO BE SUBMITTED SEPARATELY BY M.K.E.C. TO APPROPRIATE CITY ENGINEER.  
 ST. TRACKS AS PER PAWNEE MESA C.O.P.  
 BENCH MARK: BENT NAIL S. FULL CROWN ORANGE HEDGE 30' W. OF W. LINE LARK LANE, N.E. COR. PAWNEE MESA ADDITION ELEV. 142.22'

BUILDERS DEVELOPMENT INC.  
 1000 PARKLANE  
 WICHITA, KS  
 ZONED A



LOCATION MAP

**PAWNEE MESA 4TH ADDITION DRAINAGE CONCEPT & UTILITY LAYOUT**

Design: \_\_\_\_\_  
 Drawn by: \_\_\_\_\_  
 Date: \_\_\_\_\_  
 No.: \_\_\_\_\_

MID-KANSAS ENGINEERING CONSULTANTS PA  
 3500 N. ROCK ROAD  
 BUILDING 800  
 WICHITA, KANSAS 67206

LUCILLE JACOBS  
 135 N. RICHMOND  
 WICHITA, KS 67203  
 ZONED R-1

RALPH LAMP ETUX  
 RT. 8  
 3233 S. MAIZE RD.  
 WICHITA, KS 67215  
 ZONED R-1

PAWNEE AVE.  
 COMPLETE ACCESS CONTROL  
 1347.88'

COMPLETE ACCESS CONTROL  
 600'