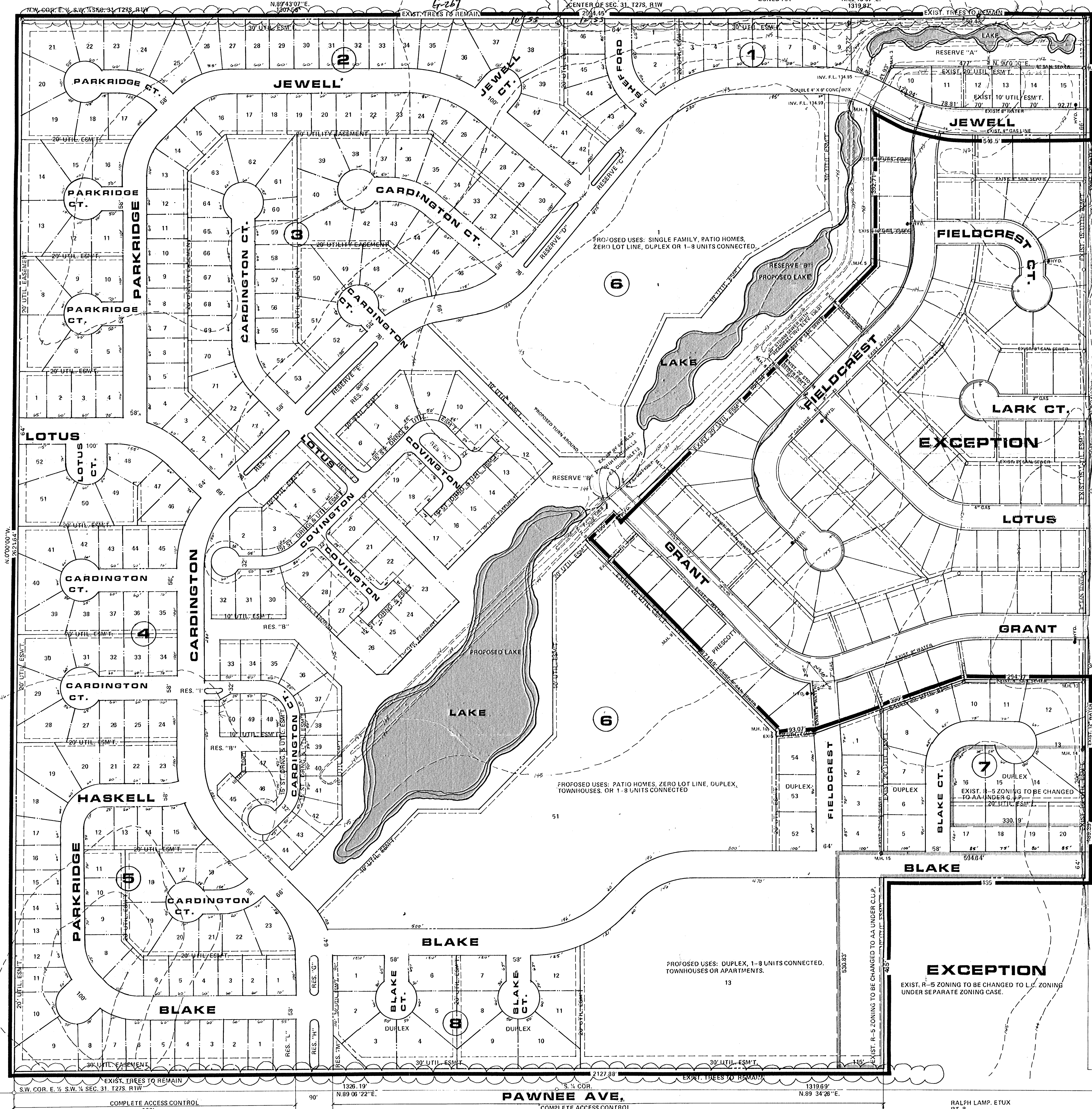


SANTA FE LAND IMPROVEMENT CO. INC.
ROOM 1200
900 POLK ST.
AMARILLO, TX ZONED AA

BUILDERS DEVELOPMENT INC.
1000 PARKLANE
WICHITA, KS
ZONED AA



BUILDERS DEVELOPMENT INC.
1000 PARKLANE
WICHITA, KS
ZONED A

EX. MANHOLES

M.H.	GRND. F.L.	DEPTH
M.H. 1	740.7	122.40
M.H. 2	742.6	123.49
M.H. 3	745.1	124.29
M.H. 4	745.1	124.79
M.H. 5	742.4	126.39
M.H. 6	742.6	127.99
M.H. 7	742.9	129.19
M.H. 8	743.0	130.39
M.H. 9	743.5	131.79
M.H. 10	744.4	132.99
M.H. 11	743.8	130.62
M.H. 12	743.3	129.42
M.H. 13	743.1	128.40
M.H. 14	743.4	131.20
M.H. 15	743.7	131.92

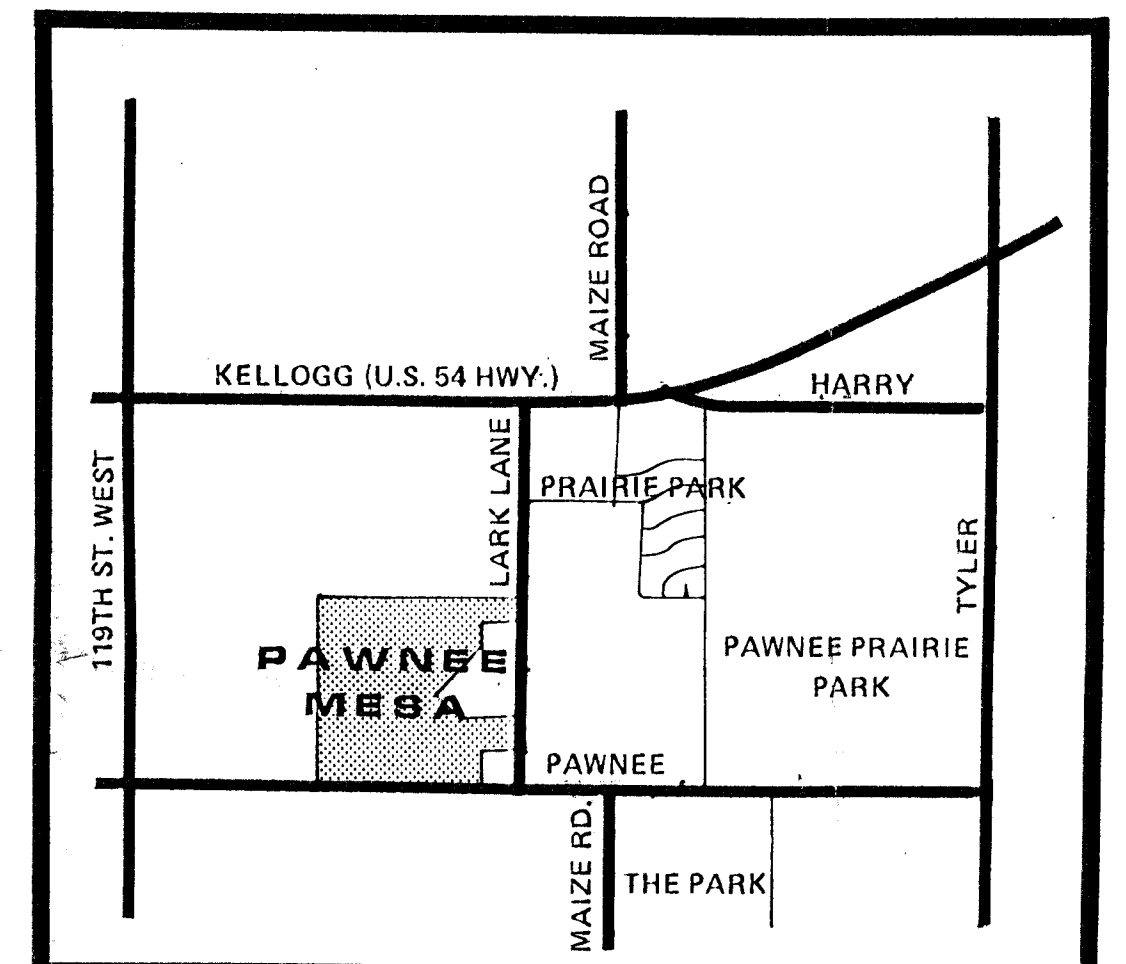
JOSEPH N. WEBER JR.
2108 S. 107TH ST. WEST
WICHITA, KS 67207
ZONED A

RESERVES "A" AND "B" FOR DRAINAGE, UTILITIES, LANDSCAPING, OPEN SPACE, RELATED RECREATIONAL FACILITIES AND CONSTRUCTION OF LAKES AND DRAINAGE STRUCTURES. IN ADDITION, RESERVE "B" ALLOWS FOR THE CONSTRUCTION OF A PROPOSED TURNAROUND AT THE END OF GRANT STREET AND PROJECT MONUMENTS.

RESERVES "C" THROUGH "M" FOR DRAINAGE, UTILITIES, STREETS, LANDSCAPING AND IRRIGATION SYSTEMS. IN ADDITION, RESERVES "L" AND "M" MAY PERMIT CONSTRUCTION OF PROJECT ENTRY MONUMENTS.

DRAINAGE CONCEPT PLAN TO BE SUBMITTED SEPARATELY BY M.K.E.C. TO APPROPRIATE CITY ENGINEER.
SETBACKS AS PER PAWNEE MESA C.U.P.
BENCH MARK: BENT NAIL S. FULL USAGE ORANGE HEDGE 30' W. OF W. LINE LARK LANE. N.E. COR. PAWNEE MESA ADDITION ELEV. -142.22

BUILDERS DEVELOPMENT INC.
ZONED A



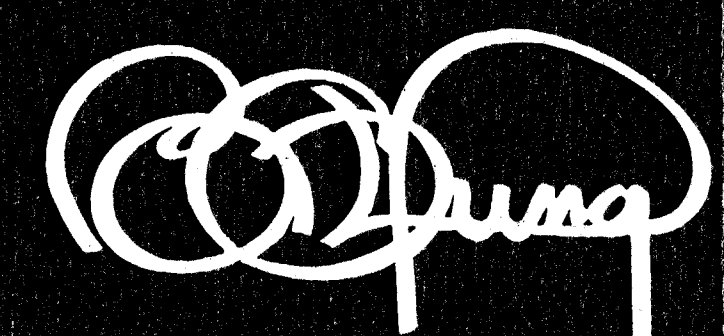
LOCATION MAP

PRELIMINARY PLAT PAWNEE MESA 3RD

BUILDERS DEVELOPMENT, INC. 1530 S. OLIVER, SUITE 200, WICHITA, KS. 67218

DATE: JAN. 11, 1998 *revised Jan 19, 1998*

1' CONTOUR INTERVALS



BILL G. YUNG DESIGN
8225 E. 35TH ST. NORTH, WICHITA, KS. 67226 316-683-5567