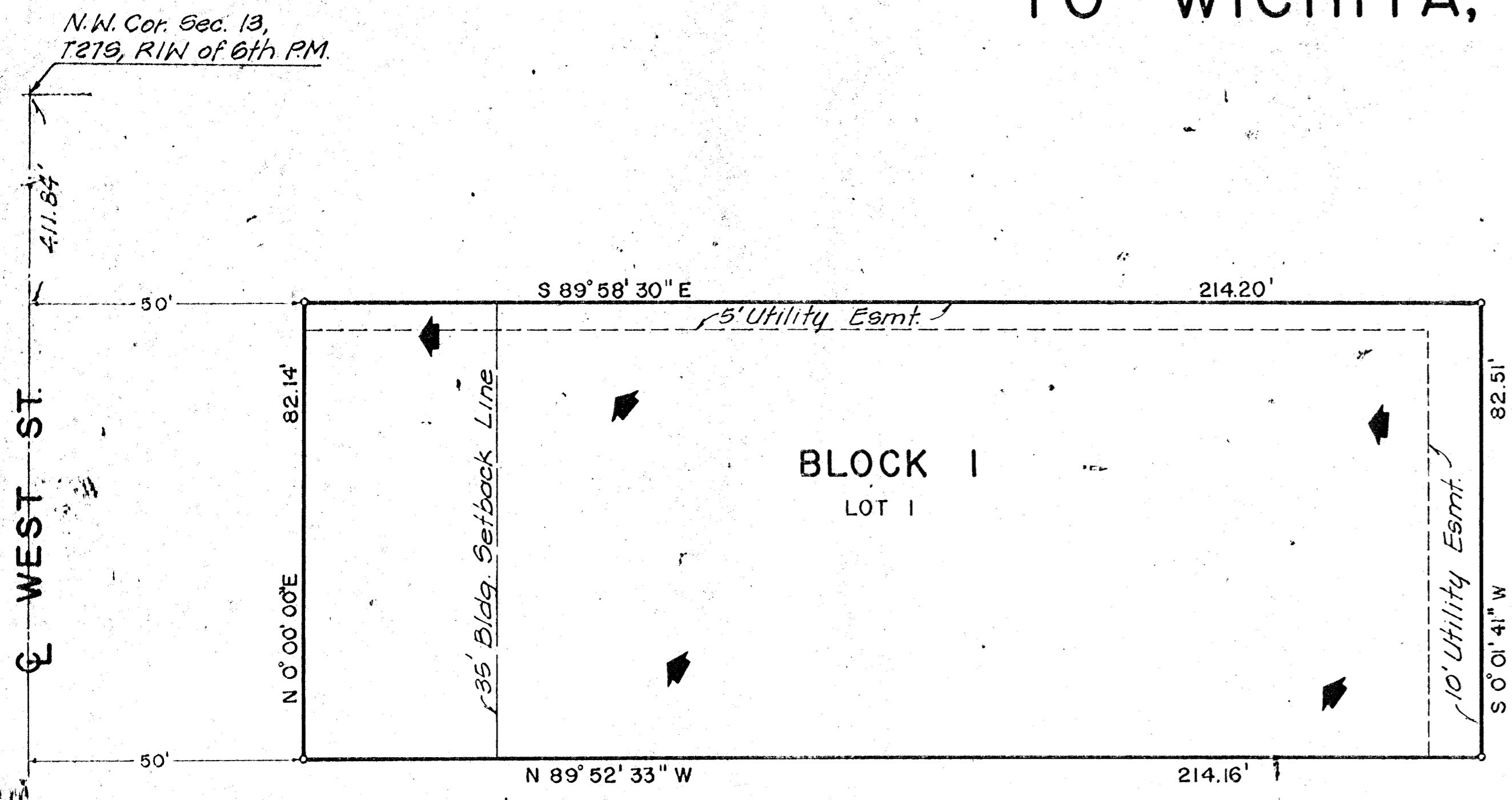


# KISSIRE ADDITION

## TO WICHITA, SEDGWICK COUNTY, KANSAS



**NOTE:**

Entire area shall be graded to drain to streets, gutters or existing stormwater sewer via drives, flumes, private stormwater and/or other approved drainage facilities. Final Drainage Plan to be submitted with Site Grading Plan.

February 1981  
1" = 20'

**DRAINAGE CONCEPT**

**MARCH 1981**