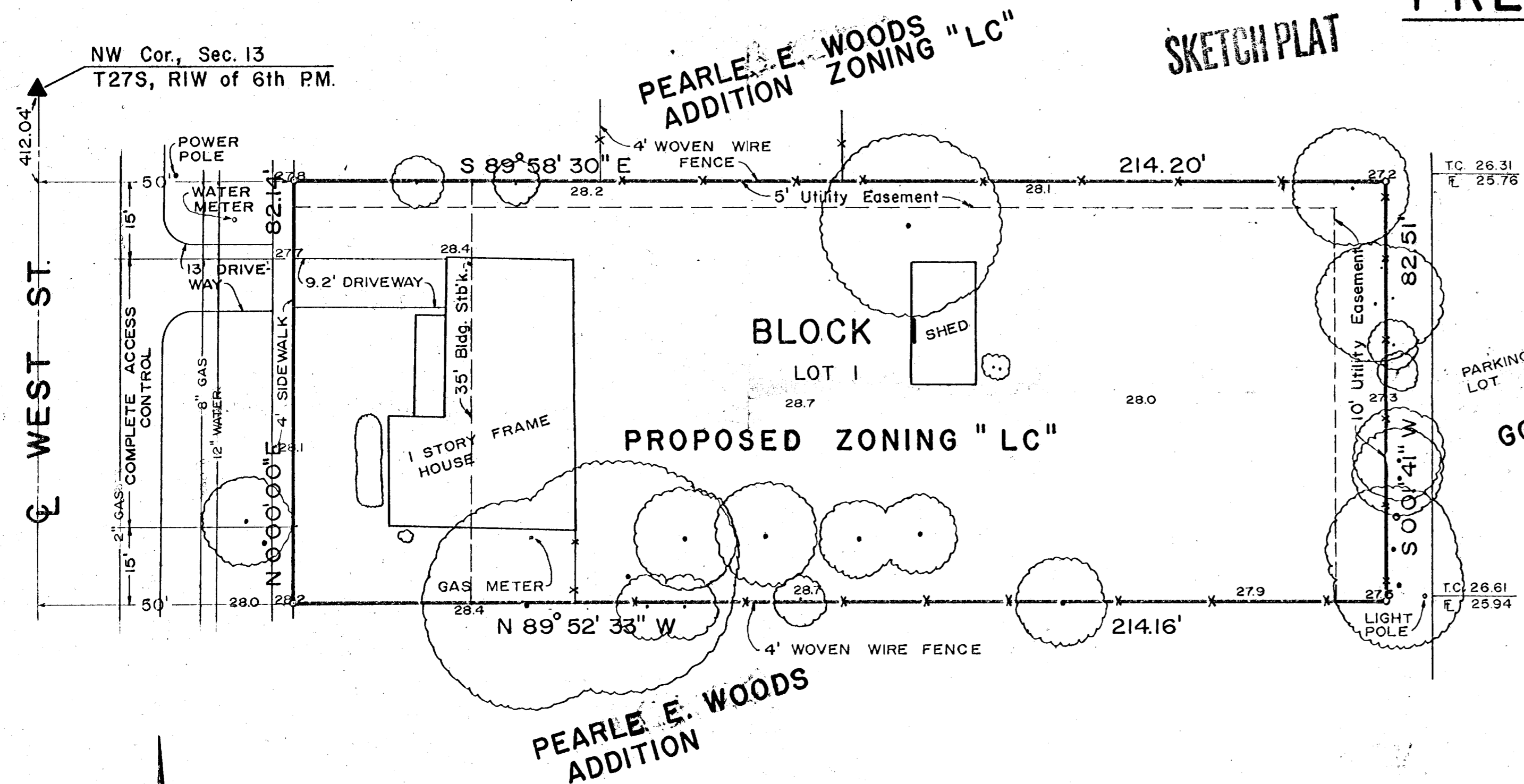


# KISSIRE ADDITION

## TO WICHITA, SEDGWICK COUNTY, KANSAS

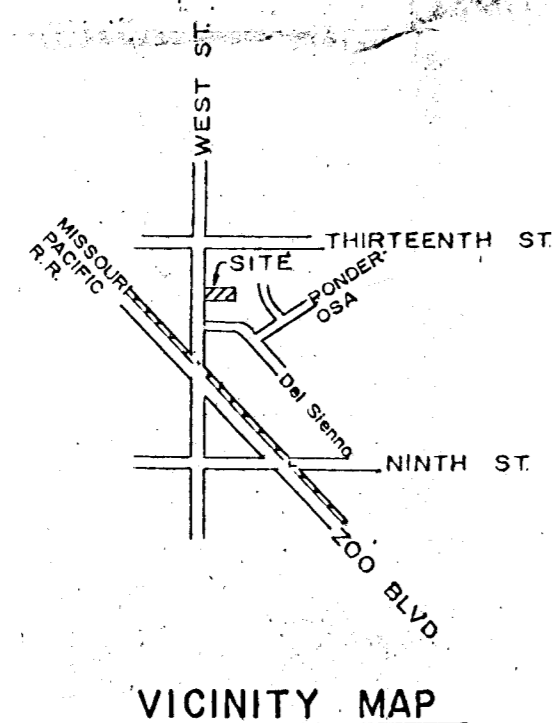
### PRELIMINARY PLAT



UTILITIES:  
 GAS - GAS SERVICE  
 SAN. SEWER - CITY OF WICHITA  
 WATER - CITY OF WICHITA  
 POWER - K.G.E.  
 TELEPHONE - SOUTHWESTERN BELL

February 1981  
 1" = 20'

B.M. - 44' North and 44' East of  
 13th St. and West St.  
 126.44 City Disc.



OWNER/DEVELOPER: Ed Kissire  
 9119 Bekemeyer  
 Wichita, Ks. 67212

ENGINEER: Professional Engineering Consultants P.A.  
 1440 E. English  
 Wichita, Ks. 67211