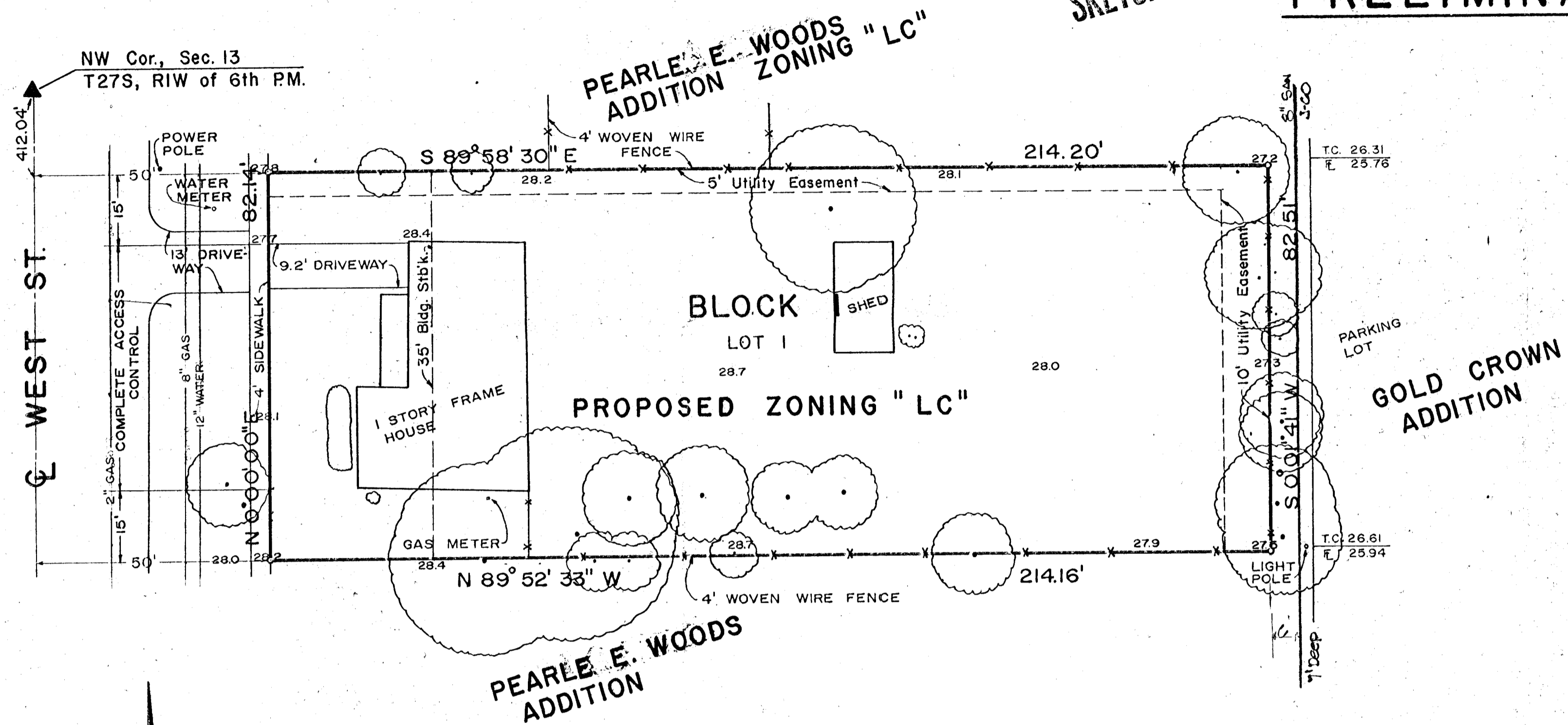


KISSIRE ADDITION

TO WICHITA, SEDGWICK COUNTY, KANSAS

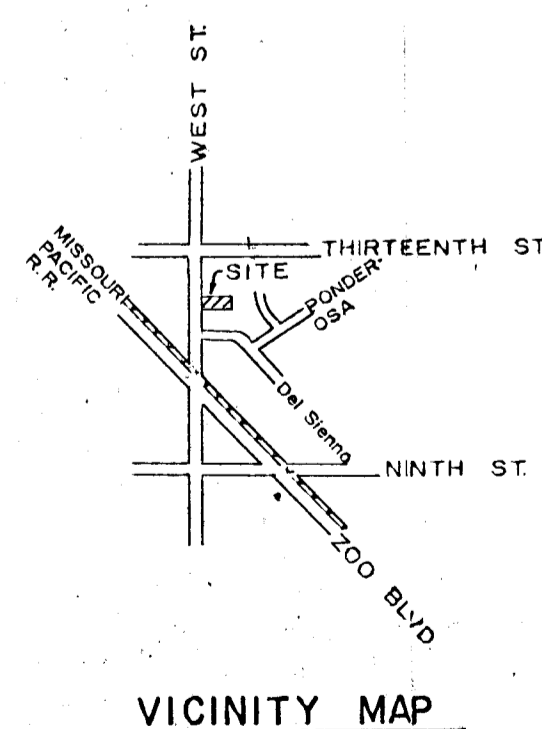
SKETCH PLAT PRELIMINARY PLAT



UTILITIES:
 GAS - GAS SERVICE
 SAN. SEWER - CITY OF WICHITA
 WATER - CITY OF WICHITA
 POWER - K.G.E.
 TELEPHONE - SOUTHWESTERN BELL

February 1981
 1" = 20'

B.M. - 44' North and 44' East of
 13th St. and West St.
 126.44 City Disc.



OWNER/DEVELOPER: Ed Kissire
 9119 Bekemeyer
 Wichita, Ks. 67212

ENGINEER: Professional Engineering Consultants P.A.
 1440 E. English
 Wichita, Ks. 67211