

PRELIMINARY PLAT PAWNEE AND WEST INDUSTRIAL PARK SECOND ADDITION

WICHITA, SEDGWICK COUNTY, KANSAS

ALL OF LOTS 2 AND 3 AND LOT 4, EXCEPT THE SOUTH 726 FEET THEREOF, PAWNEE AND WEST INDUSTRIAL PARK, WICHITA, SEDGWICK COUNTY, KANSAS, BEING SITUATED IN THE SE 1/4 OF SEC. 35, TWP. 27-S, R-1-W OF THE 6TH P.M., SEDGWICK COUNTY, KANSAS.

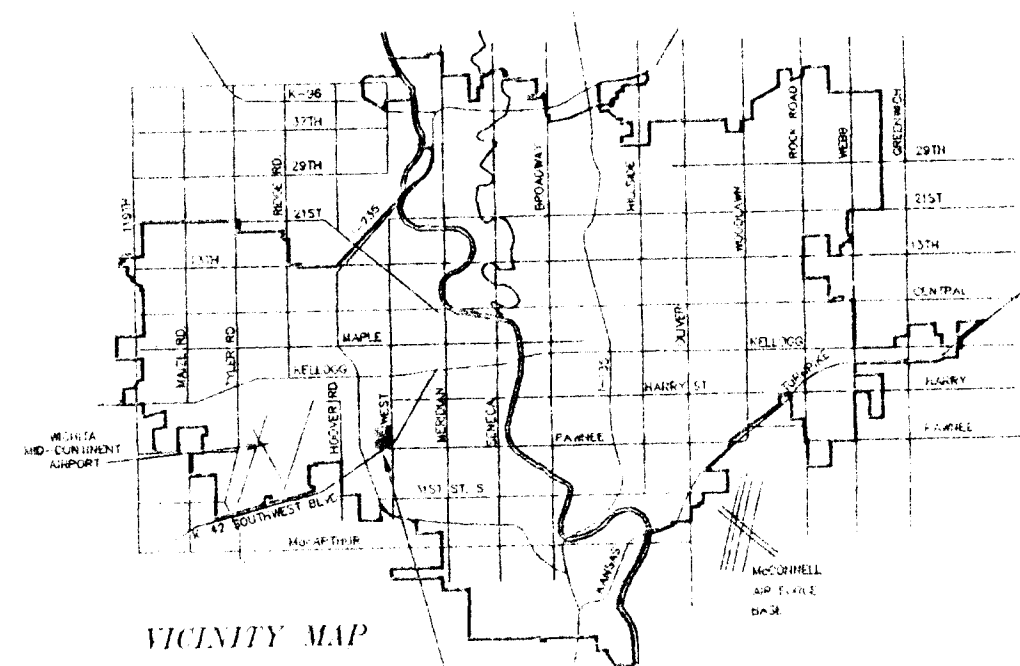
JOHN DUGAN
ROUTE 1, BOX 37
CLEARWATER, KS 67026

PH 794-2133

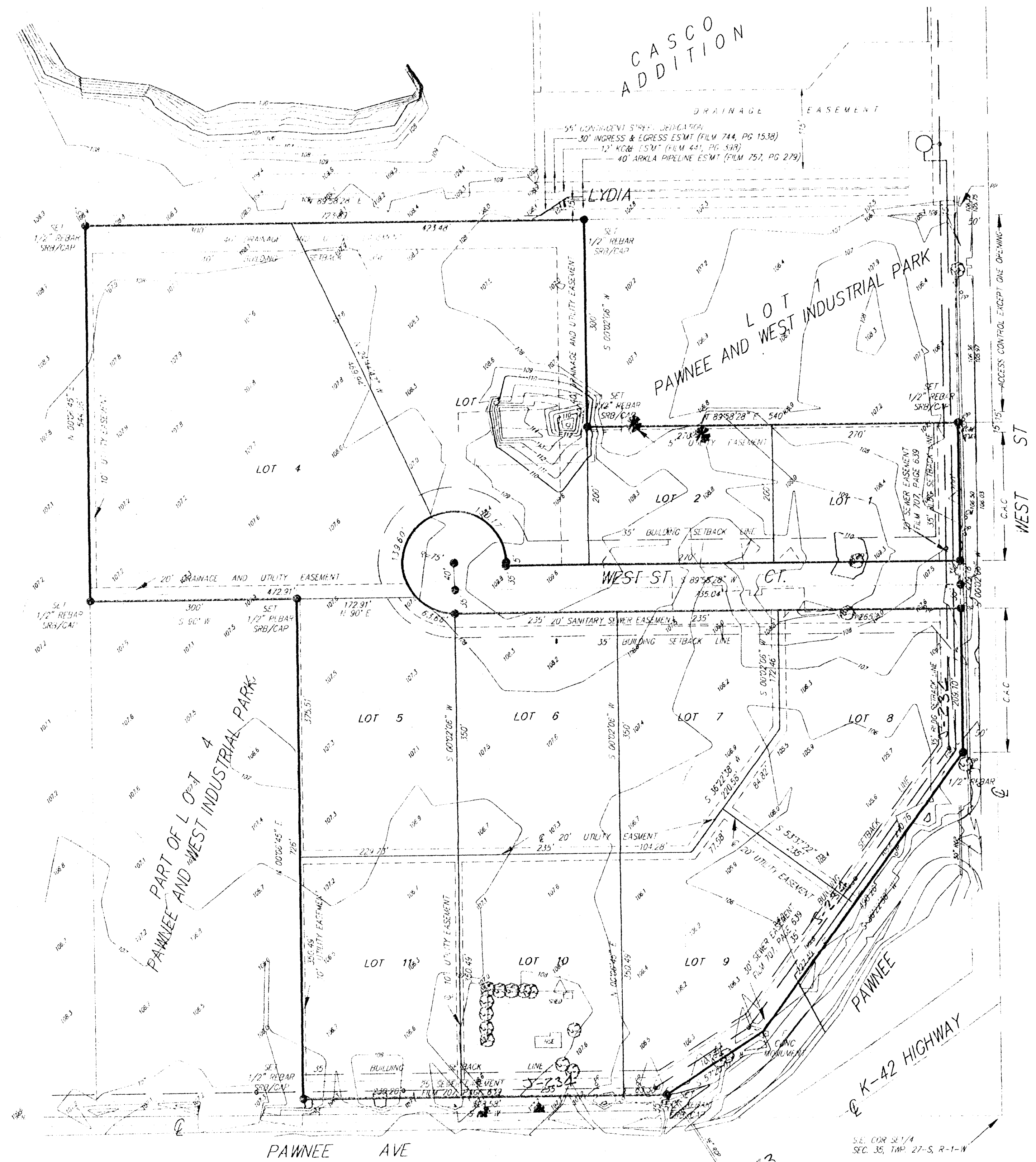


1" = 100'
E.P. O.Y.D. 11
12/8/1995

UNPLATTED



PAWNEE AND WEST INDUSTRIAL PARK SECOND ADDITION



DWG FILE: 00248PP-SAM
PROJECT NO. 95A00248P

SRB 921 NORTH MAIN 315-264-8008
WICHITA, KANSAS 67203 FAX 264-4621
SAVOY, RUGGLES & BOHM, P. A.
ENGINEERING & SURVEYING

16 JAN 95