

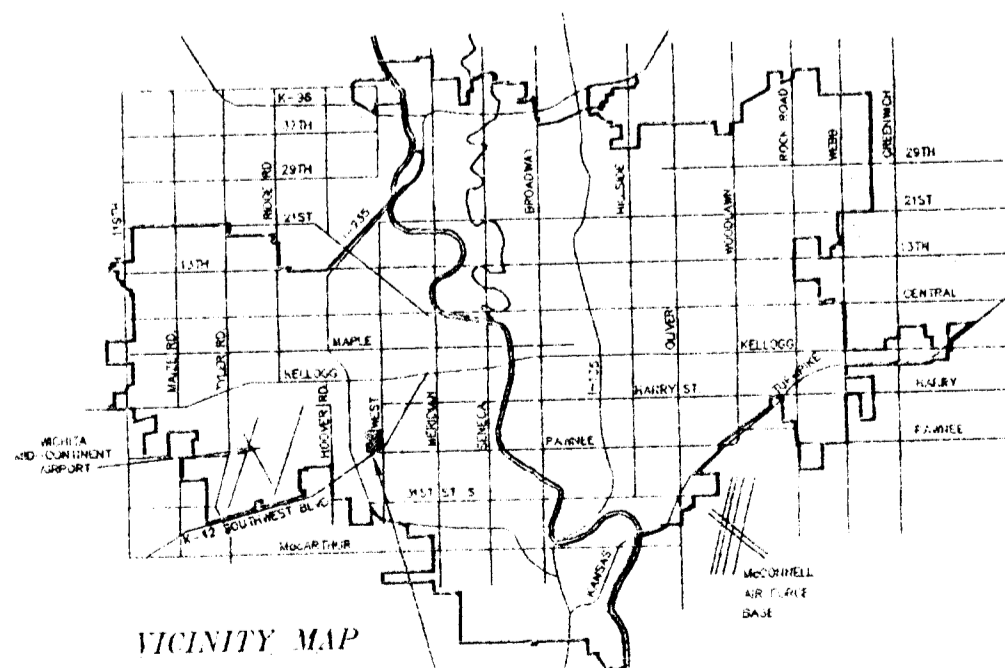
PRELIMINARY PLAT PAWNEE AND WEST INDUSTRIAL PARK SECOND ADDITION

WICHITA, SEDGWICK COUNTY, KANSAS

ALL OF LOTS 2 AND 3 AND LOT 4, EXCEPT THE SOUTH 126 FEET THEREOF, PAWNEE AND WEST INDUSTRIAL PARK, WICHITA, SEDGWICK COUNTY, KANSAS,
BEING SITUATED IN THE SE 1/4 OF SEC. 35, TWP. 27-S, R-1-W OF THE 6TH P.M., SEDGWICK COUNTY, KANSAS.

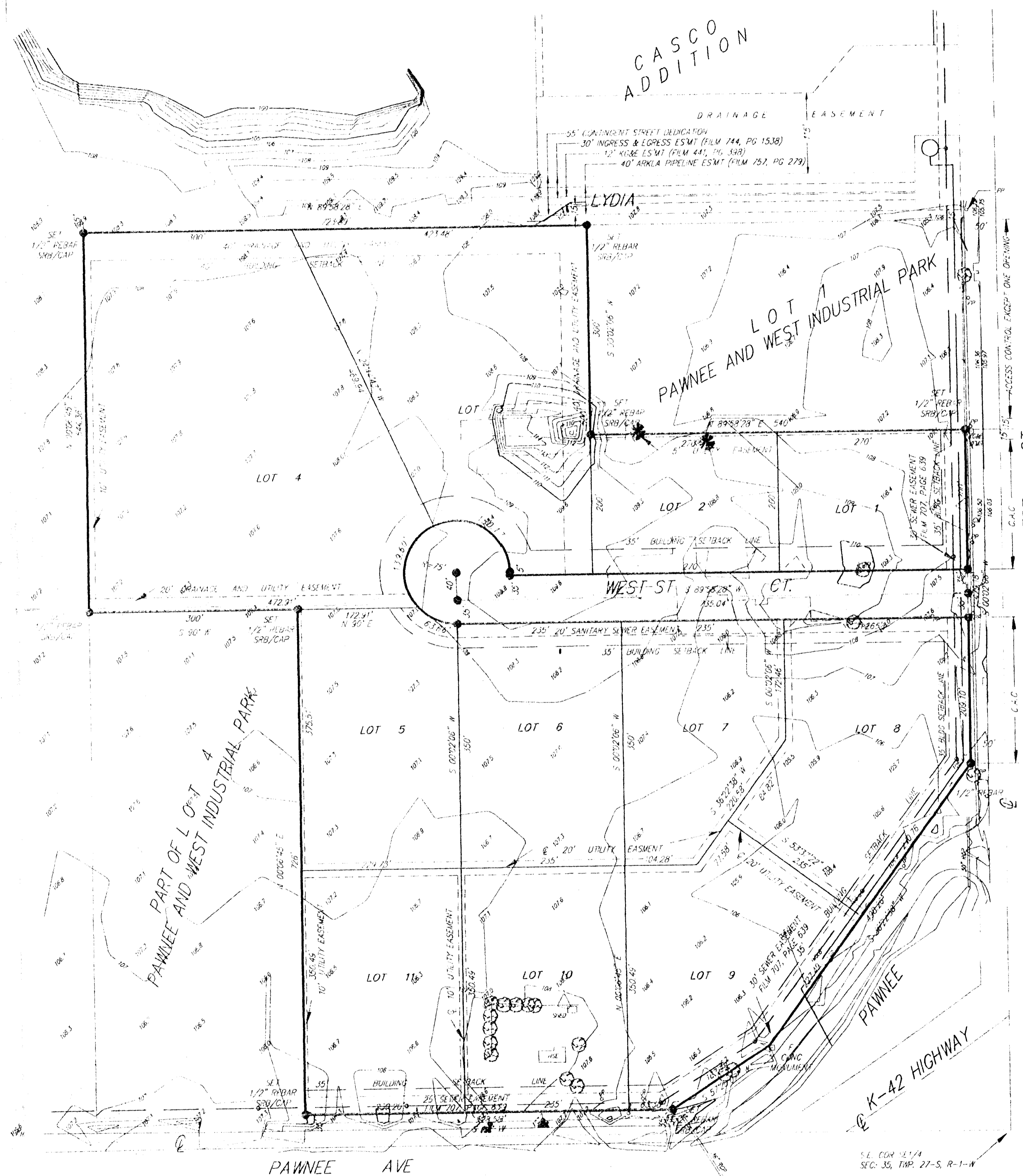
JOHN DUGAN
ROUTE 1, BOX 37
CLEARWATER, KS 67026

PH 794-2133



VICINITY MAP

PAWNEE AND WEST
INDUSTRIAL PARK
SECOND ADDITION



UNPLATTED