
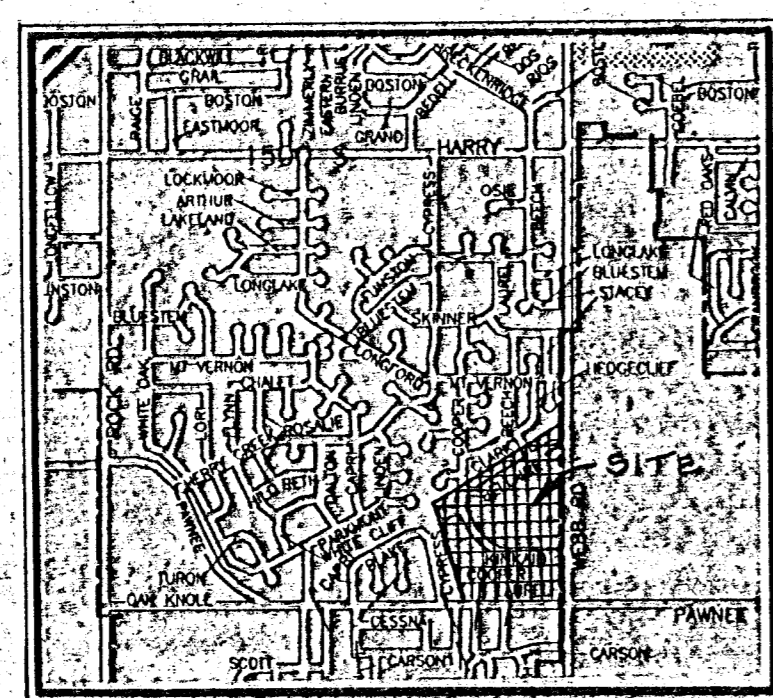
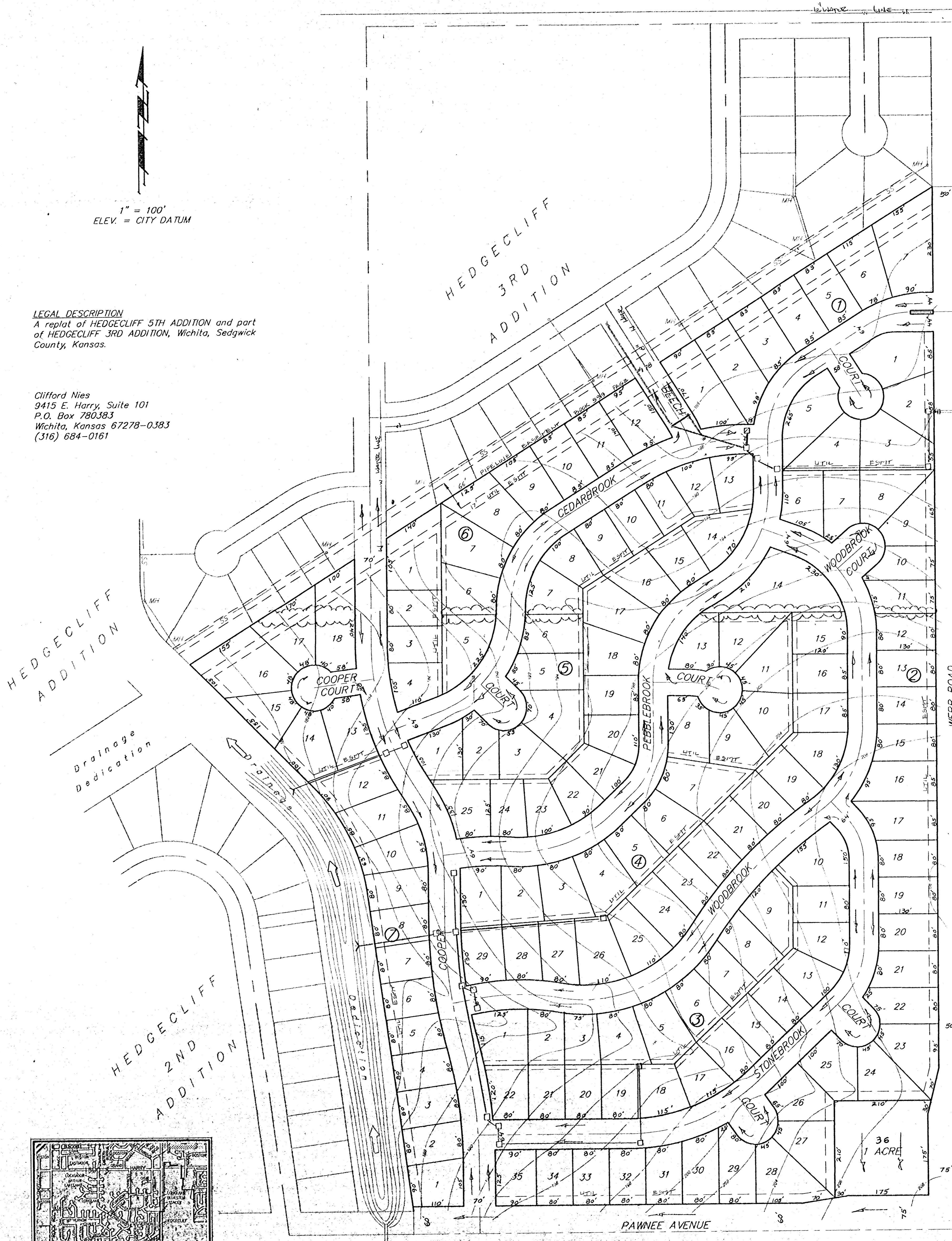


PRELIMINARY PLAT
PEBBLEBROOK ADDITION
WICHITA, SEDGWICK COUNTY, KANSAS


 1" = 100'
 ELEV. = CITY DATUM

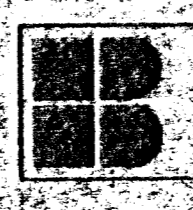
LEGAL DESCRIPTION
 A replat of HEDGECLIFF 5TH ADDITION and part of HEDGECLIFF 3RD ADDITION, Wichita, Sedgwick County, Kansas.

Clifford Nies
 9415 E. Harry, Suite 101
 P.O. Box 780383
 Wichita, Kansas 67278-0383
 (316) 684-0161



Vicinity Map

DRAINAGE CONCEPT

October 23, 1992

BAUGHMAN COMPANY, P. A.
 ENGINEERING & SURVEYING
 316-262-7277 • 316-262-7278 • WICHITA, KANSAS 67211