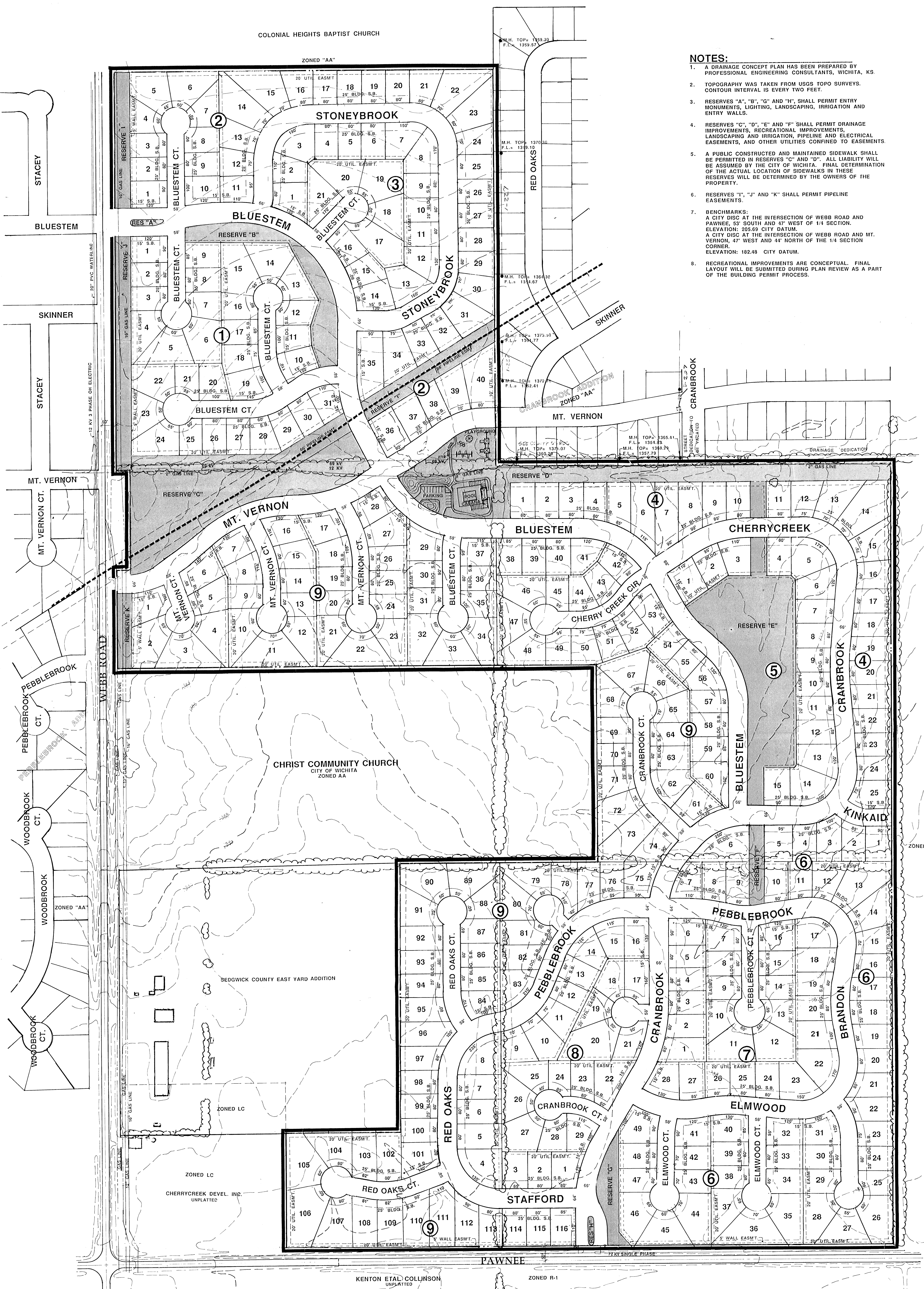


COLONIAL HEIGHTS BAPTIST CHURCH

ZONED "AA"

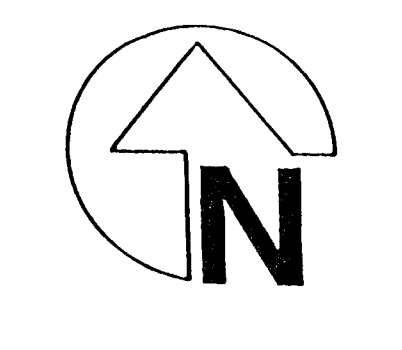
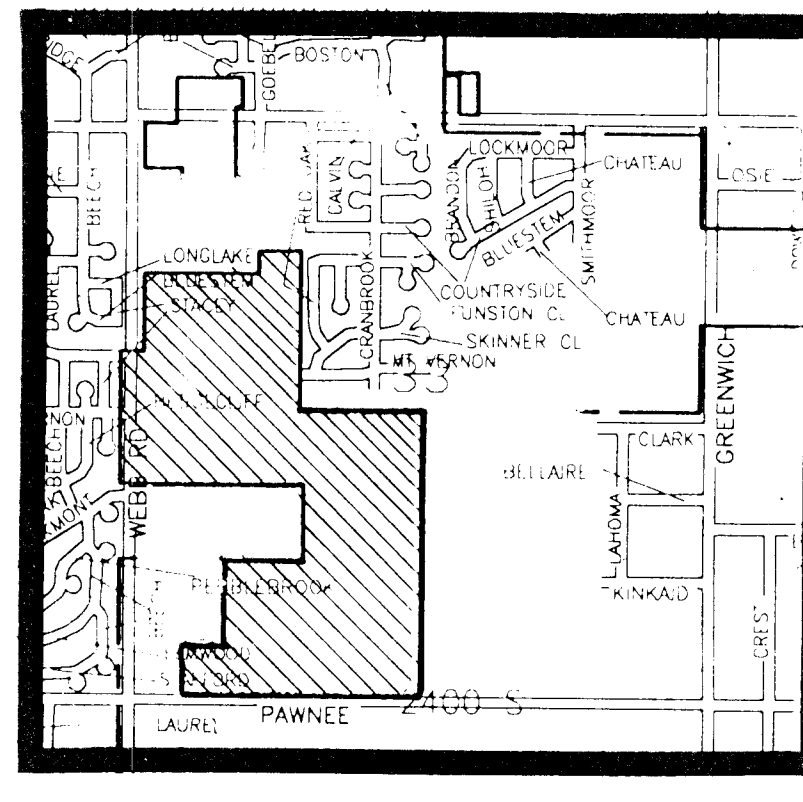
NOTES:

1. A DRAINAGE CONCEPT PLAN HAS BEEN PREPARED BY PROFESSIONAL ENGINEERING CONSULTANTS, WICHITA, KS.
2. TOPOGRAPHY WAS TAKEN FROM USGS TOPO SURVEYS. CONTOUR INTERVAL IS EVERY TWO FEET.
3. RESERVES "A", "B", "G" AND "H", SHALL PERMIT ENTRY MONUMENTS, LIGHTING, LANDSCAPING, IRRIGATION AND ENTRY WALLS.
4. RESERVES "C", "D", "E" AND "F" SHALL PERMIT DRAINAGE IMPROVEMENTS, RECREATIONAL IMPROVEMENTS, LANDSCAPING AND IRRIGATION, PIPELINE AND ELECTRICAL EASEMENTS, AND OTHER UTILITIES CONFINED TO EASEMENTS.
5. A PUBLIC CONSTRUCTED AND MAINTAINED SIDEWALK SHALL BE PERMITTED IN RESERVES "C" AND "D". ALL LIABILITY WILL BE ASSUMED BY THE CITY OF WICHITA. FINAL DETERMINATION OF THE ACTUAL LOCATION OF SIDEWALKS IN THESE RESERVES WILL BE DETERMINED BY THE OWNERS OF THE PROPERTY.
6. RESERVES "I", "J" AND "K" SHALL PERMIT PIPELINE EASEMENTS.
7. BENCHMARKS:
A CITY DISK AT THE INTERSECTION OF WEBB ROAD AND PAWNEE, 53' SOUTH AND 47' WEST OF 1/4 SECTION. ELEVATION: 205.89 CITY DATUM.
A CITY DISK AT THE INTERSECTION OF WEBB ROAD AND MT. VERNON, 47' WEST AND 44' NORTH OF THE 1/4 SECTION CORNER. ELEVATION: 192.48 CITY DATUM.
8. RECREATIONAL IMPROVEMENTS ARE CONCEPTUAL. FINAL LAYOUT WILL BE SUBMITTED DURING PLAN REVIEW AS A PART OF THE BUILDING PERMIT PROCESS.



JOHN A. III & HELEN J. GRANT UNPLATTED

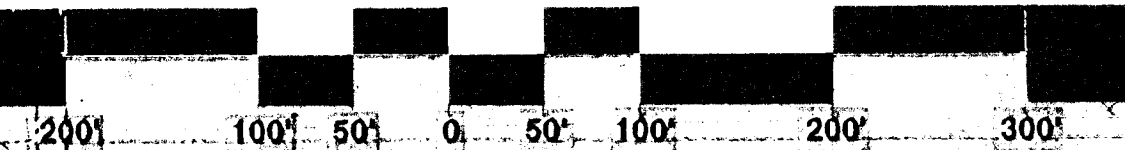
ZONED R-1



SCALE: 1"=100'
DATE: MAY 9, 1994

PRELIMINARY PLAT
PEBBLEBROOK II

OWNER: CHERRY CREEK DEVELOPMENT INC. 9415 E. HARRY WICHITA, KANSAS 67278 (316) 684-0161



BILL G. YUNG DESIGN
4912 E. 29TH STREET NORTH WICHITA, KS 67220 316-683-6667