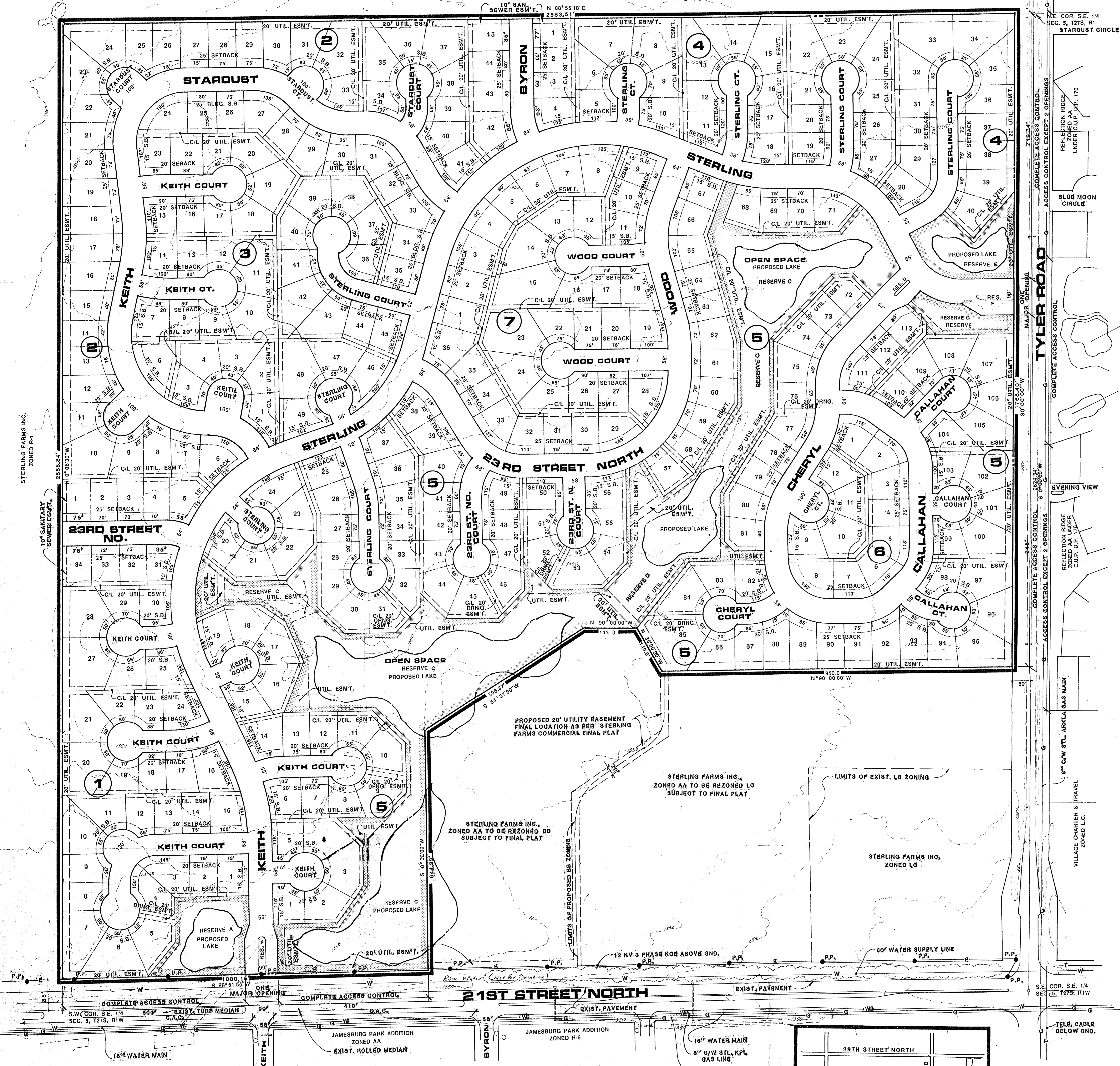


STERLING FARMS INC.
ZONED R-1

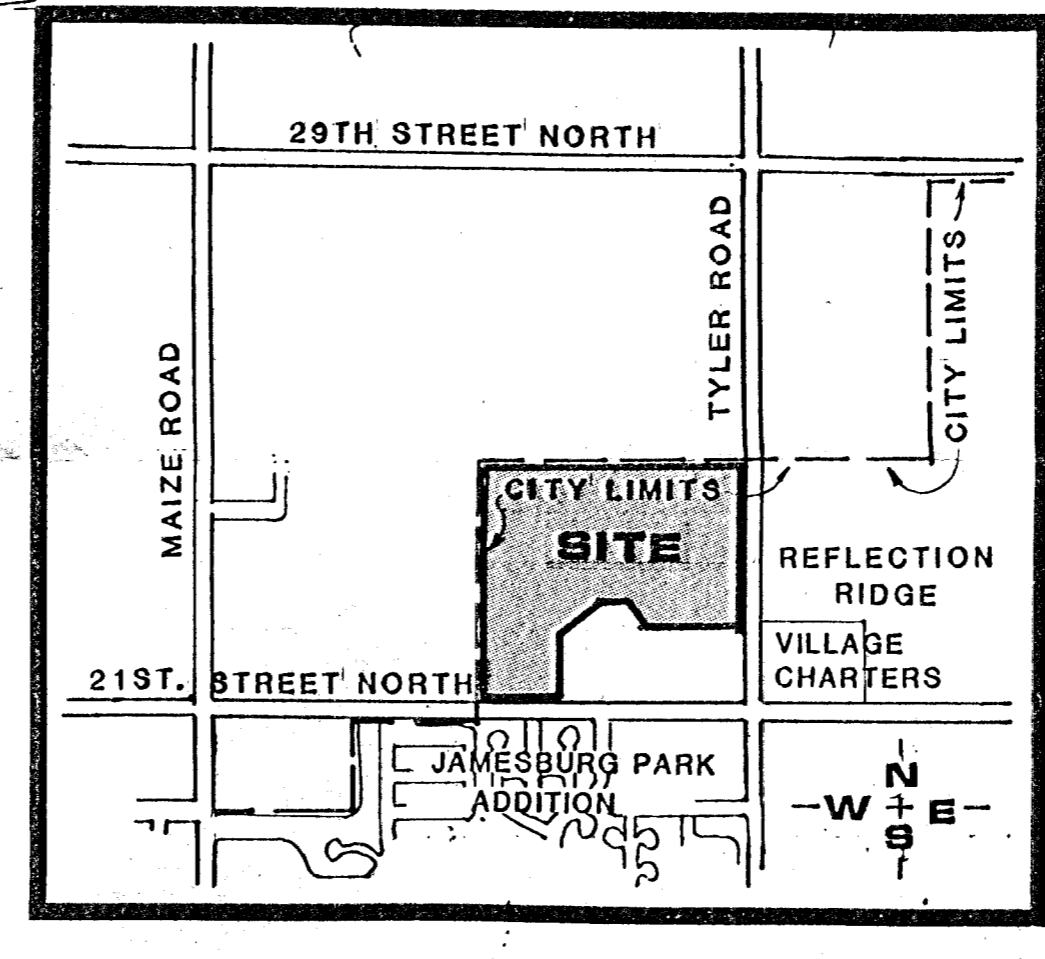


NOTES

- 1) A DRAINAGE CONCEPT PLAN HAS BEEN PREPARED BY POE AND ASSOCIATES OF KANSAS INC., 424 N. OLIVER, SUITE 110, WICHITA, KS 67208.
- 2) BENCH MARK: CITY STANDARD DISC, 38' WEST, 90' SOUTH OF THE CENTERLINE OF TYLER AND 21ST STREET NORTH. ELEVATION 1597.35 MEAN SEA LEVEL.
- 3) RESERVE DESCRIPTIONS:
 RESERVE "A" SHALL PERMIT - ENTRANCE STRUCTURES/SIGNAGE, DRAINAGE STRUCTURES, WALKWAYS, LANDSCAPING, UTILITIES CONFINED TO EASEMENTS, LAKE, GAZEBOS, WINDMILL FEATURE.
 RESERVE "B" SHALL PERMIT - ENTRANCE STRUCTURES/SIGNAGE, LANDSCAPING.
 RESERVE "C" SHALL PERMIT - ENTRANCE STRUCTURES, ENTRANCE SIGNAGE, DRAINAGE STRUCTURES, SWIMMING POOLS, PUBLIC RESTROOMS, WALKWAYS, LANDSCAPING, UTILITIES CONFINED TO EASEMENTS, PLAYGROUND EQUIPMENT/STRUCTURES, LAKES, GAZEBOS, PARKING, WINDMILL FEATURE, PICNIC FACILITIES.
 RESERVE "D" SHALL PERMIT - SAME AS RESERVE "B".
 RESERVE "E" SHALL PERMIT - SAME AS RESERVE "A".
 RESERVE "F" SHALL PERMIT - SAME AS RESERVE "B".
 RESERVE "G" SHALL PERMIT - ENTRANCE STRUCTURES/SIGNAGE, DRAINAGE STRUCTURES, WALKWAYS, LANDSCAPING, UTILITIES CONFINED TO EASEMENTS, GAZEBOS.
- 4) CONTOURS ARE FROM AERIAL PHOTO PREPARED BY MILES AIR PHOTO SURVEY, MANHATTAN, KS 66502 DATED 10 FEB. 1987.

TOTAL ACRES = 122.10
(6,318,778.70 SQ. FT.)

PRELIMINARY PLAT UNDER C.U.P., D.P.- 178
STERLING FARMS



SCALE: 1" = 100'
CONTOUR INTERVAL = 2'

OWNER: STERLING FARMS INC., 1801 WEST 13TH STREET, WICHITA, KANSAS 67203

DATE: JUNE 14, 1985 JUNE 22, 1988 JUNE 30, 1988

TOPOGRAPHY FEB. 10, 1987

