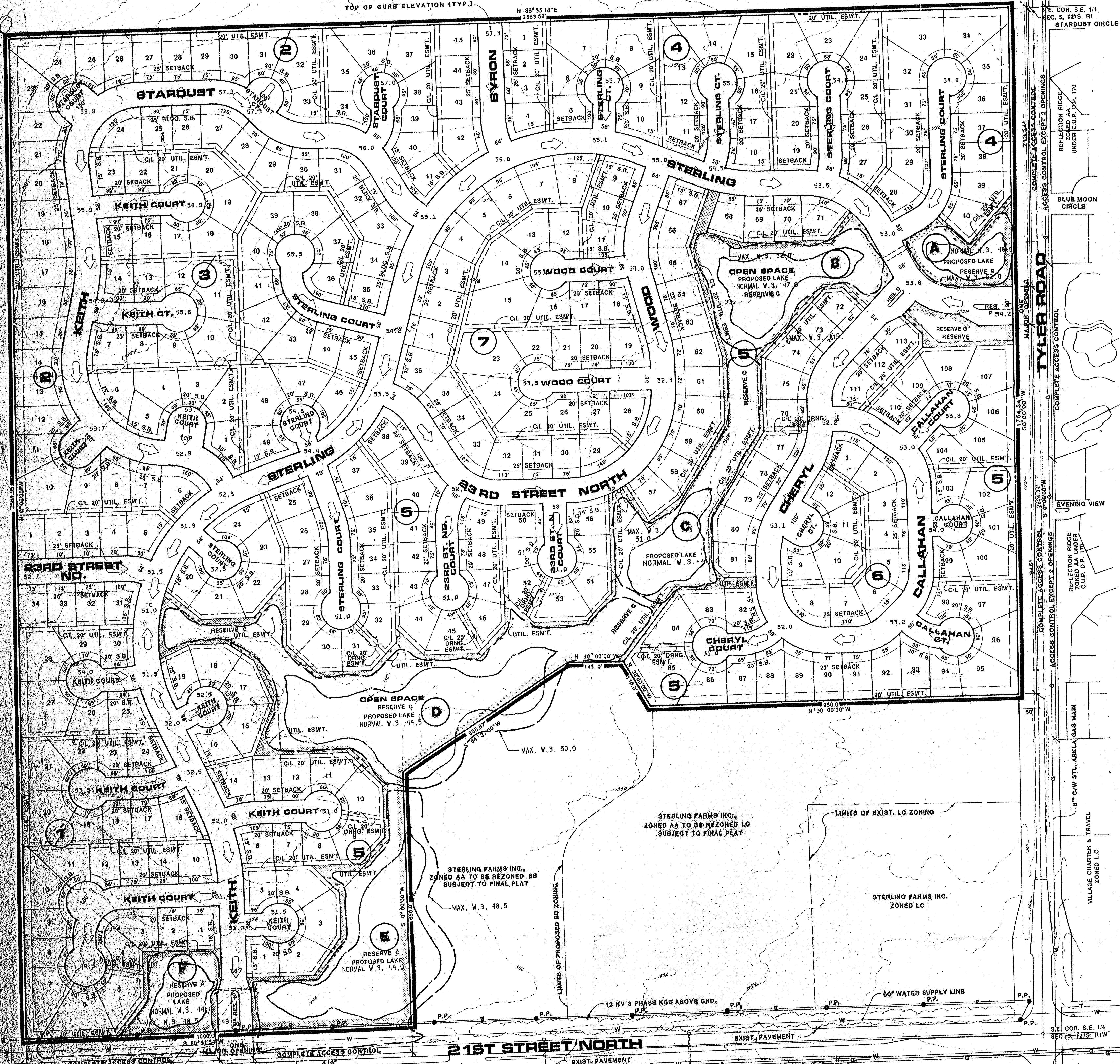


TOP OF CURB ELEVATION (TYP.)



**DRAINAGE CONCEPT**

1. Total Drainage Area 328.0 Acres (To 21st St.)
2. Peak Flow  $Q_{pe} = 522.7$  cfs
3. Proposed Channel 20' Bottom - 4:1 Sides - 0.4% Slope - 3' depth @ 522.7 cfs.
4. Minimum Detention Storage 50 Ac/Ft.
5. Outflow @ 21st St.  $Q_{out} = 340$  cfs.

**POND DATA**

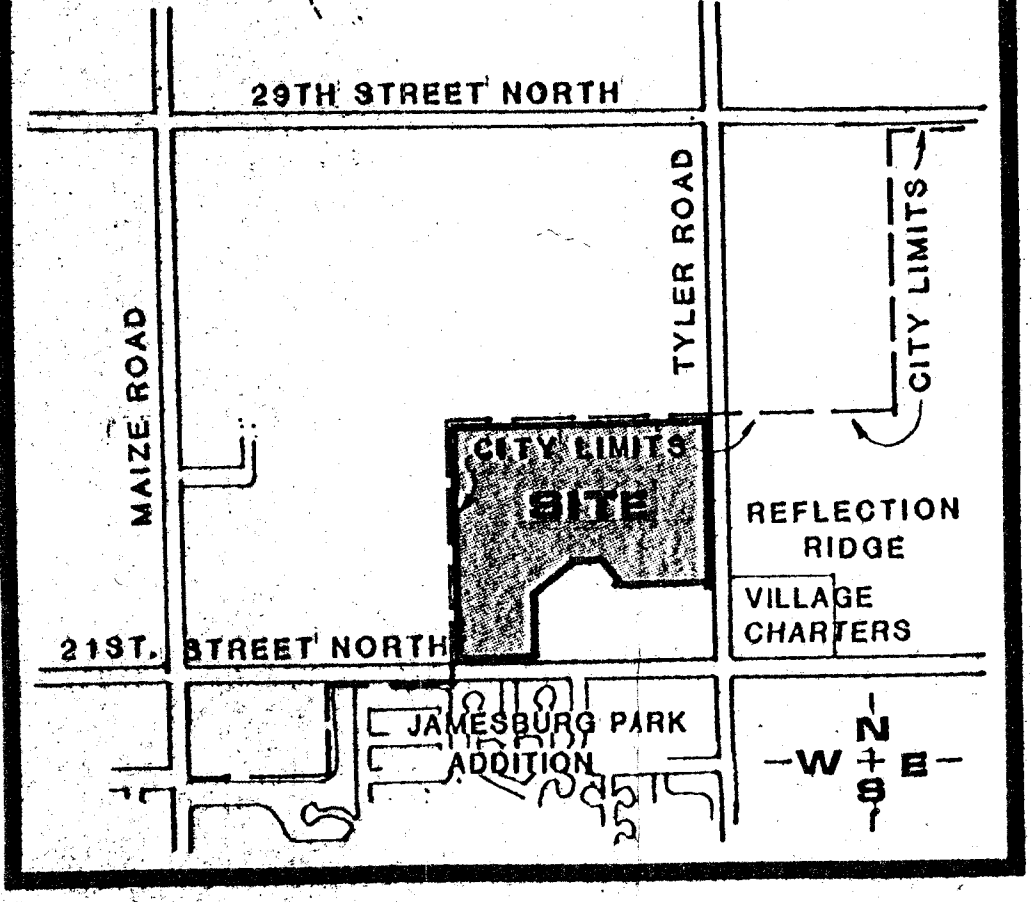
POND DESIGNATION	MAX. WATER SURFACE	NORMAL WATER SURFACE	STORAGE PROVIDED
A	1352.0	1348.0	2.30
B	1352.0	1347.0	7.39
C	1351.0	1346.0	6.77
D	1350.0	1344.5	22.02
E	1348.5	1344.0	13.51
F	1348.5	1344.0	3.98
			Total 55.97 Ac/Ft.

**NOTES**

- 1) A DRAINAGE CONCEPT PLAN HAS BEEN PREPARED BY POE AND ASSOCIATES OF KANSAS INC., 434 N. OLIVER, SUITE 110, WICHITA, KS 67208.
- 2) BENCH MARK: CITY STANDARD DISC, 39' WEST, 90' SOUTH OF THE CENTERLINE OF TYLER AND 21ST STREET NORTH. ELEVATION 1337.35 MEAN SEA LEVEL.
- 3) RESERVE DESCRIPTIONS:  
 RESERVE "A" SHALL PERMIT - ENTRANCE STRUCTURES/SIGNAGE, DRAINAGE, DRAINAGE STRUCTURES, WALK-WAYS, LANDSCAPING, UTILITIES CONFINED TO EASEMENTS, LAKES, GAZEBOS.  
 RESERVE "B" SHALL PERMIT - ENTRANCE STRUCTURES/SIGNAGE, LANDSCAPING.  
 RESERVE "C" SHALL PERMIT - ENTRANCE STRUCTURES/SIGNAGE, DRAINAGE/ DRAINAGE STRUCTURES, WALK-WAYS, LANDSCAPING, UTILITIES CONFINED TO EASEMENTS, PLAYGROUND EQUIPMENT/STRUCTURES, LAKES, GAZEBOS.  
 RESERVE "D" SHALL PERMIT - ENTRANCE STRUCTURES/SIGNAGE, LANDSCAPING.  
 RESERVE "E" SHALL PERMIT - SAME AS RESERVE "A".  
 RESERVE "F" SHALL PERMIT - SAME AS RESERVE "B".  
 RESERVE "G" SHALL PERMIT - ENTRANCE STRUCTURES/SIGNAGE, DRAINAGE/ DRAINAGE STRUCTURES, WALK-WAYS, LANDSCAPING, UTILITIES CONFINED TO EASEMENTS, GAZEBOS.
- 4) CONTOURS ARE FROM AERIAL PHOTO PREPARED BY MILES AIR PHOTO SURVEY, MANHATTAN, KS 66502 DATED 10 FEB. 1987.

TOTAL ACRES =

**DRAINAGE CONCEPT** by P.O.E. & ASSOCIATES OF KANSAS INC. 14-88  
**STERLING FARMS**



SCALE: 1" = 100'  
CONTOUR INTERVAL = 2'

OWNER: STERLING FARMS INC., 1801 WEST 19TH STREET, WICHITA, KANSAS 67203

DATE: JUNE 12, 1988



**BILL G. YUNG DESIGN**  
4012 E. 29TH STREET NORTH, WICHITA, KS 67220 316-683-6667