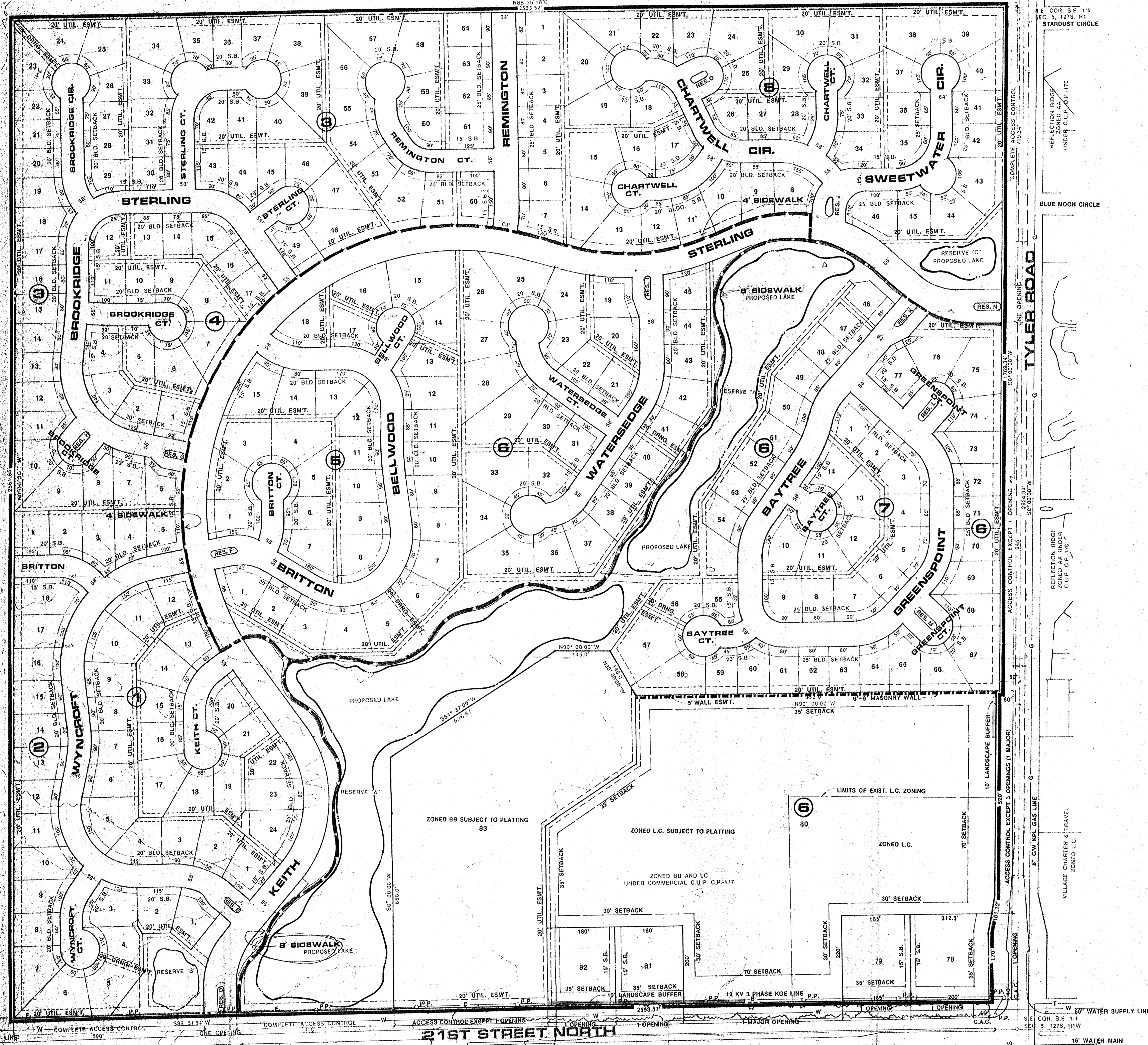
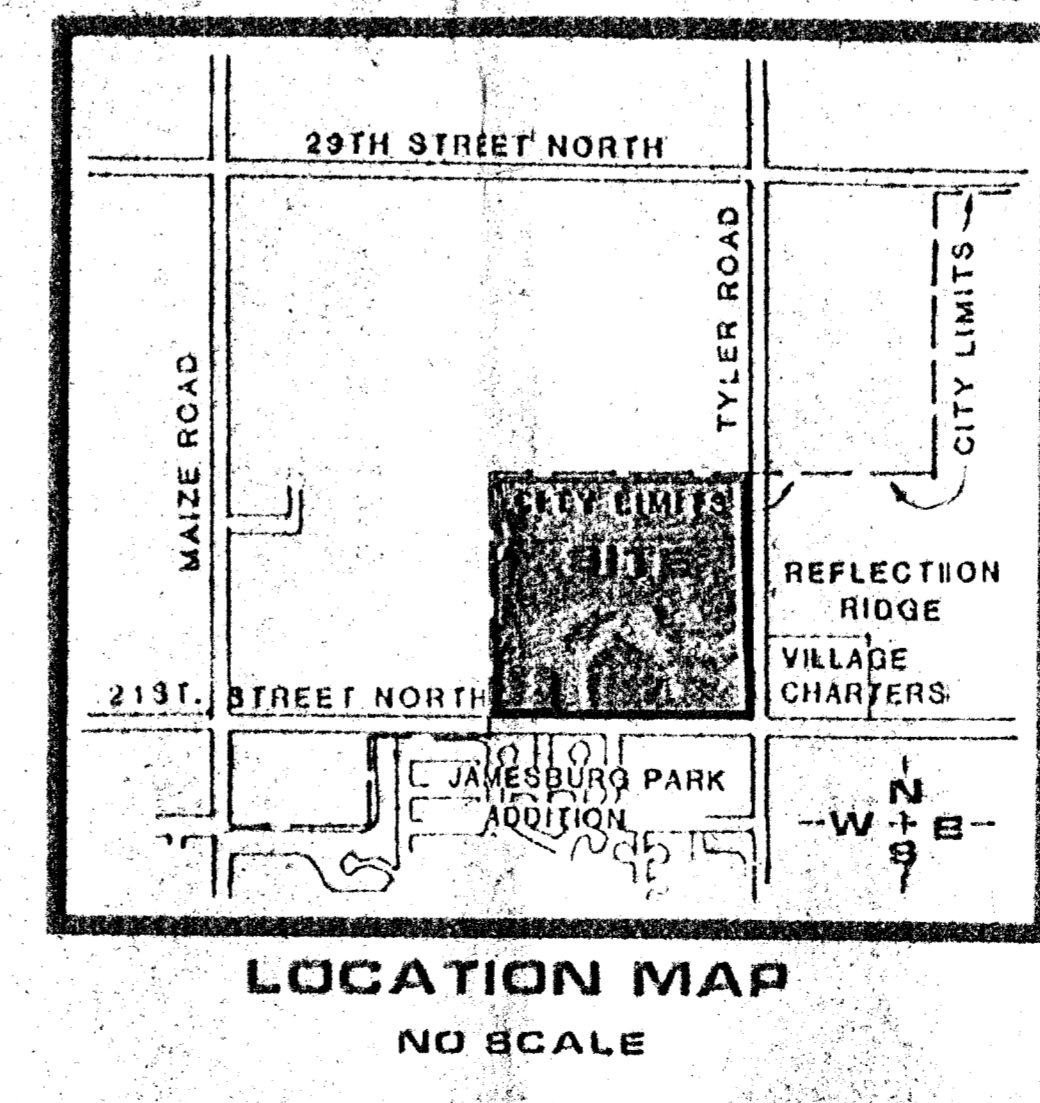


MORAN
2851 N. TYLER RD., WICHITA, KS.
ZONED R-1
UNPLATTED
N88°55'18"W
1233.52'



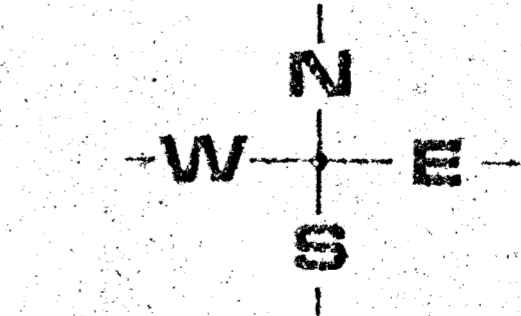
- NOTES**
- 1) A DRAINAGE CONCEPT PLAN IS TO BE PREPARED BY PROFESSIONAL ENGINEERING CONSULTANTS.
 - 2) BENCH MARK: CITY STANDARD DISC, 39' WEST, 90' SOUTH OF THE CENTERLINE OF TYLER AND 21ST ST. NO. ELEV. 1357.35 M.S.L.
 - 3) RESERVE DESCRIPTIONS:
RESERVE "A" SHALL PERMIT - ENTRY MONUMENTS, SIGNAGE, DRAINAGE, DRAINAGE STRUCTURES, SWIMMING POOLS, PUBLIC RESTROOMS, WALKWAYS, LANDSCAPING, GAZEBOS, FOUNTAINS, LAKES, PARKING AS ESTABLISHED UNDER C.U.P., WALLS CONFINED TO EASEMENTS AND UTILITIES CONFINED TO EASEMENTS.
RESERVE "B" AND "C" SHALL PERMIT - ENTRY MONUMENTS, SIGNAGE, LAKES, DRAINAGE STRUCTURES, DRAINAGE, WALKWAYS, LANDSCAPING, FOUNTAINS AND UTILITIES CONFINED TO EASEMENTS.
RESERVE "D" THRU "Q" SHALL PERMIT - ENTRY MONUMENTS, LANDSCAPING AND UTILITIES CONFINED TO EASEMENTS.
 - 4) TOPOGRAPHY IS FROM AERIAL PHOTO PREPARED BY MILES AIR PHOTO SURVEY, MANHATTAN, KS., 66502. DATED FEB. 10, 1987.
- NOTE: SIDEWALK THROUGH OPEN SPACE/ RESERVE "A" TO BE 8' WIDE**

TOTAL ACRES = 151.6 AC.
SIDEWALK PLAN
PRELIMINARY PLAT (UNDER C.U.P. DP- 177 & 178) REPLAT
STERLING FARMS

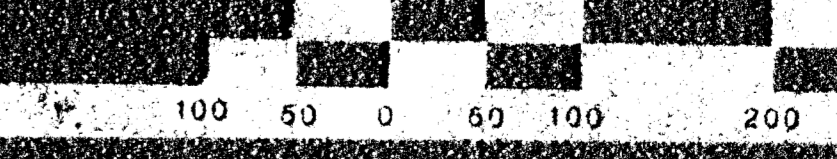


OWNER: FITCHIE DEVELOPMENT CORPORATION, 8100 S. 22ND ST. NORTH, BLDG. 500, WICHITA, KS. 67226 PH.684-7300

DATE: OCT. 4, 1988 NOV. 4, 1988



CONTOUR INTERVAL = 2'



BILL G. YOUNG DESIGN
4912 E 29TH STREET NORTH WICHITA, KS 67220 318-683-9987