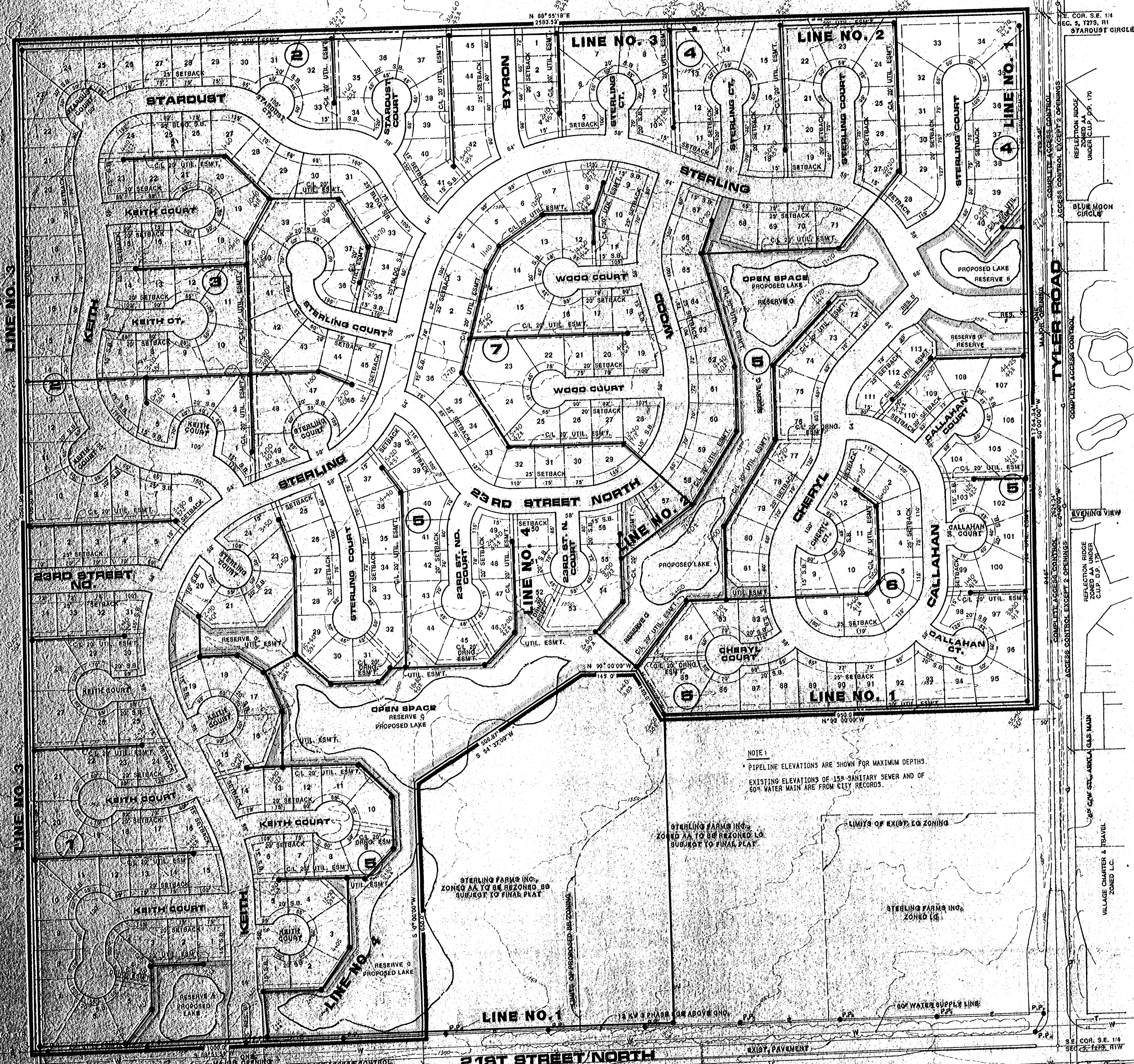


NORTH TYLER ASSOCIATES  
ZONED R-1



**SEWER GRADES**

LINE NO.	0+00	35+00	0.2%
LINE NO. 1	35+00	44+25	0.2%
	44+25	52+70	0.4%
	52+70	60+15	0.2%
LINE NO. 2	0+00	14+15	0.2%
	14+15	24+00	0.3%
	24+00	30+10	0.4%
LINE NO. 3	0+00	17+10	0.2%
	17+10	25+60	0.3%
	25+60	44+80	0.4%
LINE NO. 4	0+00	14+40	0.2%
	14+40	24+40	0.4%

\* ALL LINES NOT SHOWN ABOVE ARE AT 0.4% GRADE

**NOTES**

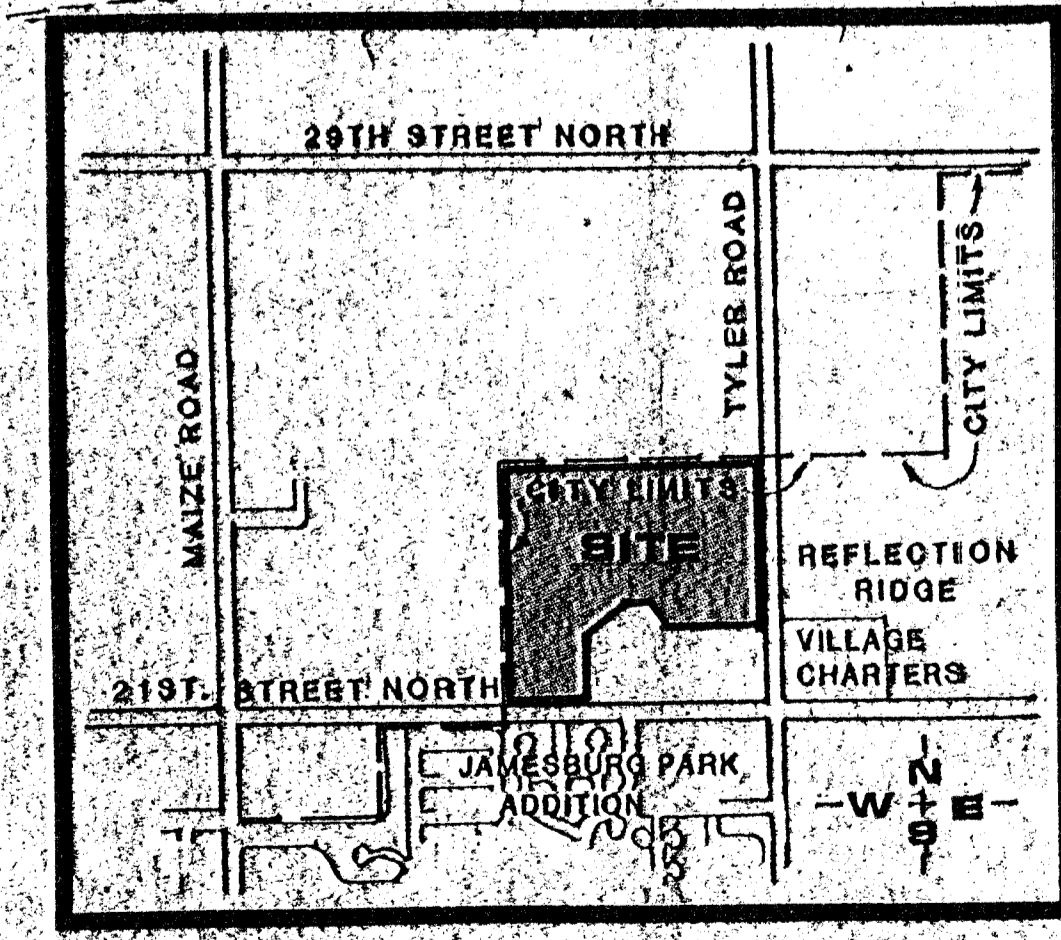
- 1) A DRAINAGE CONCEPT PLAN HAS BEEN PREPARED BY POE AND ASSOCIATES OF KANSAS INC., 434 N. OLIVER, SUITE 110, WICHITA, KS 67208.
- 2) BENCH MARK: CITY STANDARD DISC, 3' WEST, 90' SOUTH OF THE CENTERLINE OF TYLER AND 21ST STREET NORTH. ELEVATION: 1327.35 MEAN SEA LEVEL.
- 3) RESERVE DESCRIPTIONS:
  - RESERVE "A" SHALL PERMIT - ENTRANCE STRUCTURES, SIGNAGE, DRAINAGE, DRAINAGE STRUCTURES, WALKWAYS, LANDSCAPING, UTILITIES CONFINED TO EASEMENTS, LAKES, GAZEBOS.
  - RESERVE "B" SHALL PERMIT - ENTRANCE STRUCTURES, SIGNAGE, LANDSCAPING.
  - RESERVE "C" SHALL PERMIT - ENTRANCE STRUCTURES, SIGNAGE, DRAINAGE, DRAINAGE STRUCTURES, WALKWAYS, LANDSCAPING, UTILITIES CONFINED TO EASEMENTS, PLAYGROUND EQUIPMENT, STRUCTURES, LAKES, GAZEBOS.
  - RESERVE "D" SHALL PERMIT - ENTRANCE STRUCTURES, SIGNAGE, LANDSCAPING.
  - RESERVE "E" SHALL PERMIT - SAME AS RESERVE "A".
  - RESERVE "F" SHALL PERMIT - SAME AS RESERVE "B".
  - RESERVE "G" SHALL PERMIT - ENTRANCE STRUCTURES, SIGNAGE, DRAINAGE, DRAINAGE STRUCTURES, WALKWAYS, LANDSCAPING, UTILITIES CONFINED TO EASEMENTS, GAZEBOS.
- 4) CONTOURS ARE FROM AERIAL PHOTO PREPARED BY MILES AIR PHOTO SURVEY, MANHATTAN, KS 66502 DATED 10 FEB. 1967.

NOTE:  
PIPELINE ELEVATIONS ARE SHOWN FOR MAXIMUM DEPTHS.  
EXISTING ELEVATIONS OF 15" SANITARY SEWER AND OF 60" WATER MAIN ARE FROM CITY RECORDS.

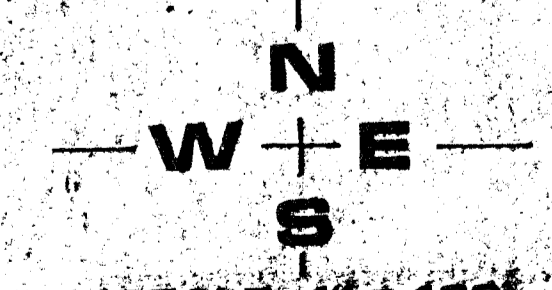
LIMITS OF EXIST. ZONING

STERLING FARMS INC. ZONED R-1 TO BE REZONED R-2 SUBJECT TO FINAL PLAN

STERLING FARMS INC. ZONED R-2



LOCATION MAP  
NO SCALE



SCALE: 1" = 100'  
CONTOUR INTERVAL: 2'

TOTAL ACRES =

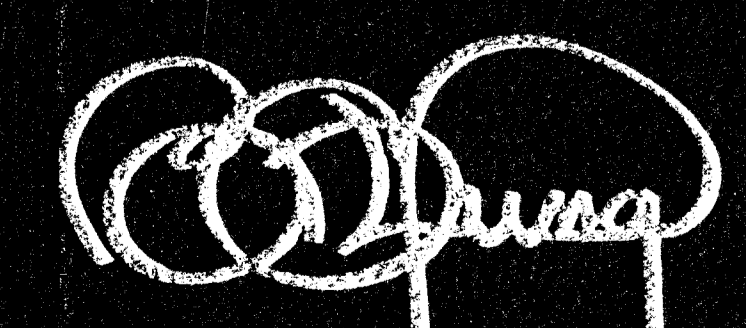
**SANITARY SEWER EXTENSIONS**

BY POE AND ASSOCIATES JUNE 16 1968

UNDER C.U.P., D.P. - 178

**STERLING FARMS**

OWNER: STERLING FARMS INC., 181 WEST 13TH STREET, WICHITA, KANSAS 67203



**BILL G. YUNG DESIGN**  
4812 E. 25TH STREET NORTH, WICHITA, KS 67220 316-883-5667