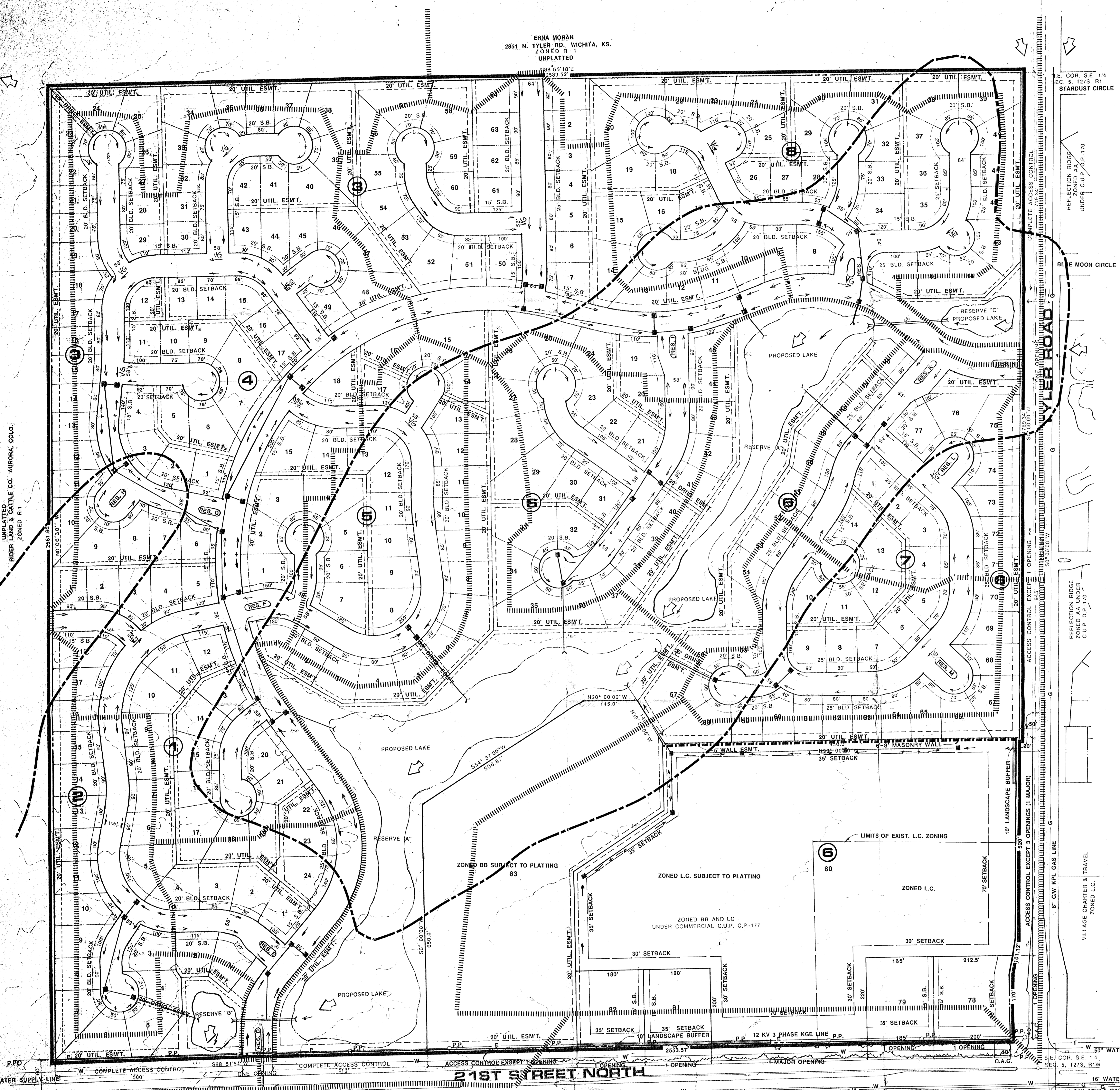
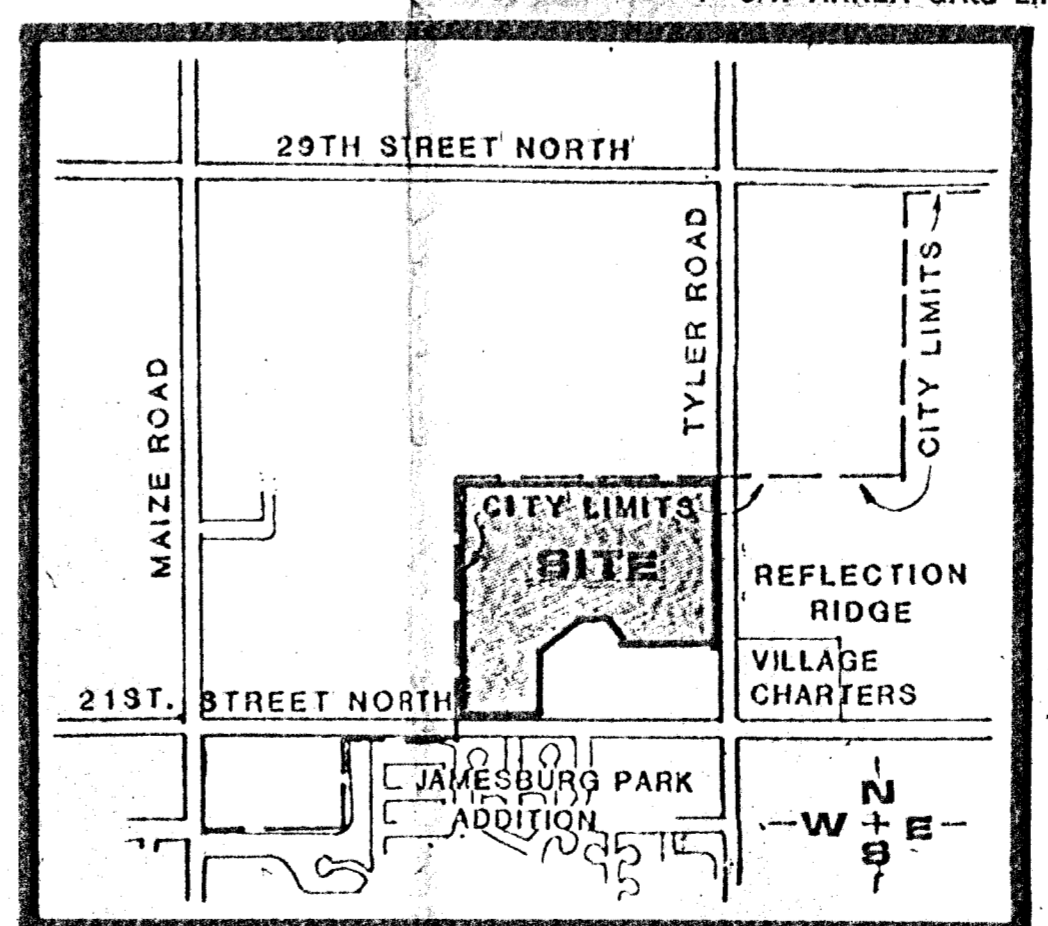


ERNA MORAN  
2851 N. TYLER RD., WICHITA, KS.  
ZONED R-1  
UNPLATTED



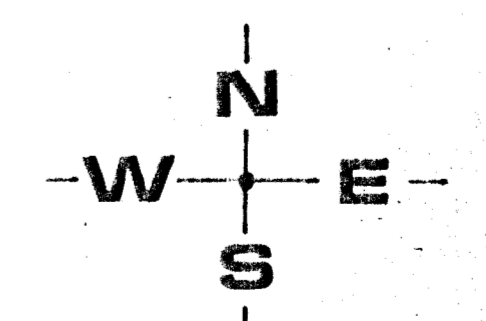
TOTAL ACRES = 122.21

DRAINAGE CONCEPT 10-7-88  
**STERLING FARMS**



LOCATION MAP  
NO SCALE

CONTOUR INTERVAL = 2'



- NOTES**
- 1) A DRAINAGE CONCEPT PLAN IS TO BE PREPARED BY PROFESSIONAL ENGINEERING CONSULTANTS.
  - 2) BENCH MARK: CITY STANDARD DISC, 38" WEST, 90" SOUTH OF THE CENTERLINE OF TYLER AND 21ST ST. NO. ELEV. 1357.35 M.S.L.
  - 3) RESERVE DESCRIPTIONS:  
RESERVE "A" SHALL PERMIT - ENTRY MONUMENTS, SIGNAGE, DRAINAGE, DRAINAGE STRUCTURES, SWIMMING POOLS, PUBLIC RESTROOMS, WALKWAYS, LANDSCAPING, GAZEBOS, FOUNTAINS, LAKES, PARKING AS ESTABLISHED UNDER C.U.P. WALLS CONFINED TO EASEMENTS AND UTILITIES CONFINED TO EASEMENTS.  
RESERVE "B" AND "C" SHALL PERMIT - ENTRY MONUMENTS, SIGNAGE, LAKES, DRAINAGE STRUCTURES, DRAINAGE, WALKWAYS, LANDSCAPING, FOUNTAINS AND UTILITIES CONFINED TO EASEMENTS.  
RESERVE "D" THRU "N" SHALL PERMIT - ENTRY MONUMENTS, LANDSCAPING AND UTILITIES CONFINED TO EASEMENTS.
  - 4) TOPOGRAPHY IS FROM AERIAL PHOTO PREPARED BY MILES AIR PHOTO SURVEY, MANHATTAN, KS. 65502. DATED FEB. 10, 1987.

- LEGEND**
- Plat Boundary
  - Drainage Basin Boundary
  - Drainage Sub-Basin Boundary
  - Drainage Direction - Minor Storm
  - Drainage Direction - Major Storm
  - Proposed Storm Sewer Inlet
  - Hydrologic Soil Group Boundary
  - Proposed Street Elevation
  - Node Identification Point

OWNER: RITCHIE DEVELOPMENT CORPORATION, 8100 E. 22ND ST, NORTH, BLDG. 500, WICHITA, KS. 67228 PH.684-7300.

DATE: OCT. 4, 1988

PROFESSIONAL ENGINEERING CONSULTANTS, P.A.  
WICHITA, KANSAS

**BILL G. YUNG DESIGN**  
4312 E. 29TH STREET NORTH WICHITA, KS 67220 316 683 5567