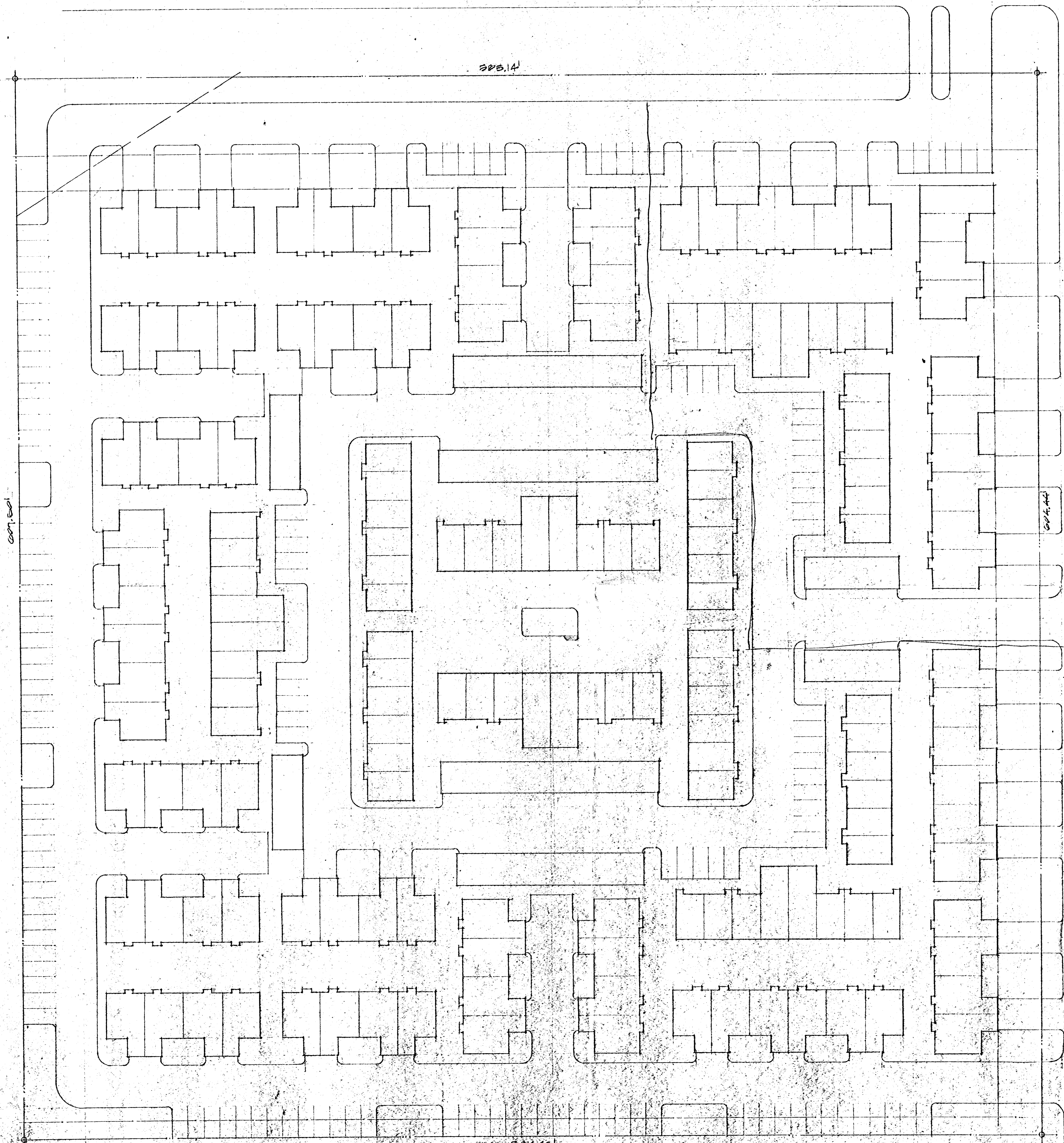


PAWNEE



Don Rossman
@

prints issued

revisions

date drawn
2/17/21



1021-1 east waterman wichita, kansas 67211
(316) 267-8233

TRADITION HOMES INC.
DAVE NIEDENS
722-9150

CONDOMINIUMS AT
PAWNEE KNOLL 7th ADD²
PAWNEE AND CAPRI
WICHITA, KANSAS

sheet title
SITE DEVELOPMENT

sheet

of sheets



SITE DEVELOPMENT PLAN 1/20/21