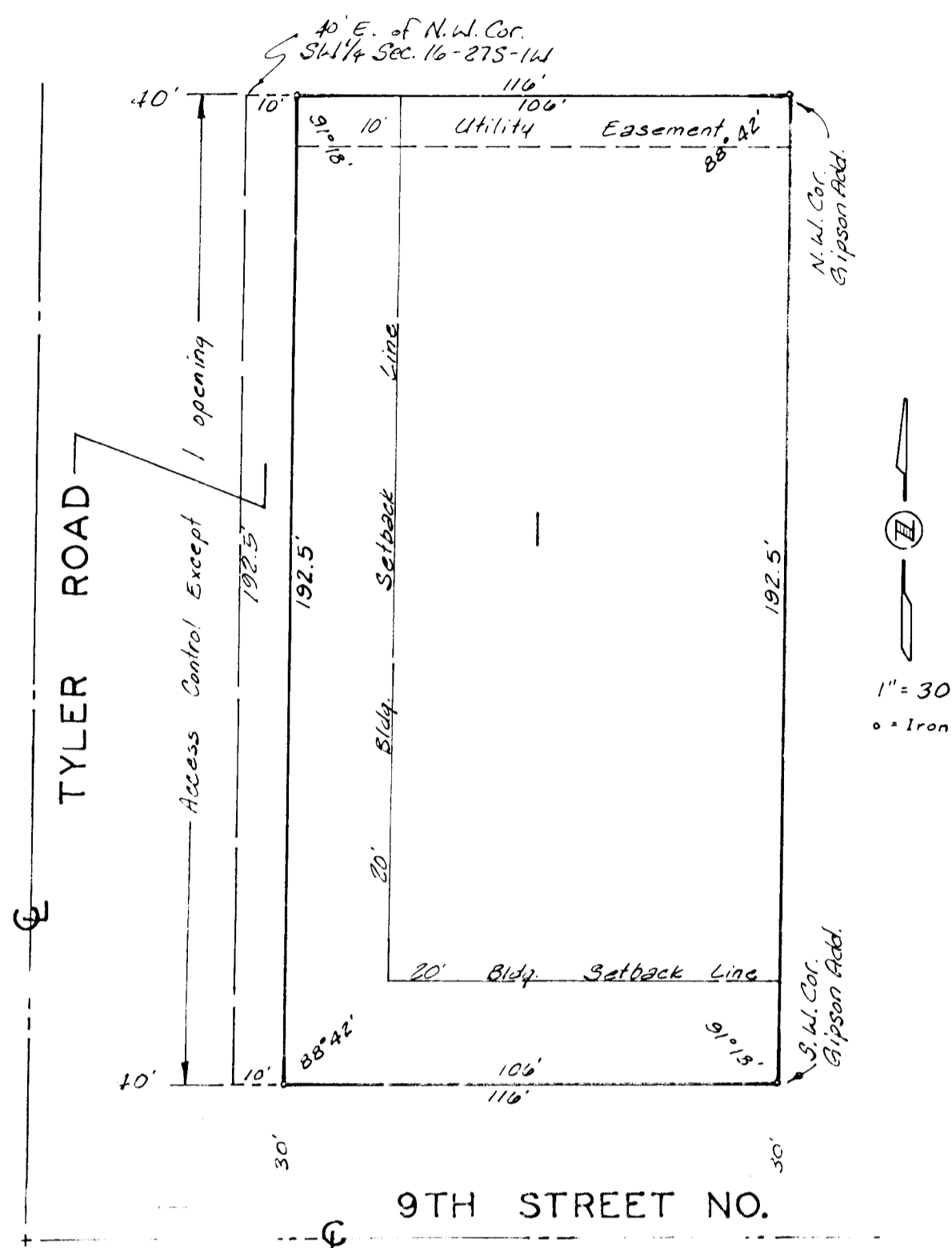


LOEHR ADDITION

WICHITA, KANSAS



State of Kansas }
 Sedgwick County } ss We, Baughman Company, P.A., Surveyors
 in aforesaid county and state do hereby certify that we
 have surveyed and platted "LOEHR ADDITION" Wichita,
 Kansas, and that the accompanying plat is a true and
 correct exhibit of the property surveyed, described as
 beginning at a point 40 feet East of the Northwest
 corner of the North half of the Southwest Quarter (N/2 SW/4)
 of Section 16, Twp 27 South, Range 1 West of the 6th P.M.,
 Sedgwick County, Kansas; thence East along the North
 line of said N/2 SW/4, 116 feet more or less to the Northwest
 corner of Gipson Addition, Wichita, Sedgwick County, Kansas;
 thence South along the West line of said Gipson Addition
 192.5 feet more or less to the Southwest corner thereof;
 thence West along the North line of Ninth Street to a
 point 40 feet East and 192.5 feet more or less South
 of the Northwest corner of the N/2 SW/4; thence North
 192.5 feet more or less to the place of beginning.

23 July 1986
Dated

Baughman Company, P.A.

Mark A. Sawyer Surveyor
Mark A. Sawyer

I know all men by these presents
 that we, the undersigned have caused the land described
 in the surveyors certificate to be platted into a lot and
 street to be known as "LOEHR ADDITION" Wichita,
 Kansas. An easement is hereby granted as indicated
 for the construction and maintenance of all public
 utilities. The street is hereby dedicated to and for
 the use of the public. All abutters rights of access
 to or from Tyler Road over and across the West line
 of lot 1 are hereby granted to the City of Wichita,
 provided however that lot 1 shall have access to
 Tyler Road at one point as shall be approved by the
 City Engineer of Wichita, Kansas.

Jim F. Loehr

Geraldine L. Loehr

This plat of "LOEHR ADDITION"
 Wichita, Kansas, has been submitted to and approved
 by the Wichita-Sedgwick County Metropolitan Area
 Planning Commission, Wichita, Kansas.
 Dated this 23 day of July, 1986
 Wichita-Sedgwick County Metropolitan Area Planning Commission

David Baylath Chairman

Michael E. Lindebak Secretary

This plat approved and all dedications
 shown hereon accepted by the Board of Commissioners
 of the City of Wichita, Kansas, this 23 day of
July, 1986.

Tony Casado Mayor

Donald C. Giszick City Clerk

Entered on transfer record this 23 day of July, 1986.

Don Wright County Clerk

State of Kansas }
 Sedgwick County } ss This is to certify that this plat
 has been filed for record in the office of the
 Register of Deeds this 23 day of July,
 1986, at 10 o'clock AM; and is duly recorded.

Pat Kettler Register of Deeds

Ed Reso Deputy

State of Kansas }
 Sedgwick County } ss The foregoing instrument acknow-
 ledged before me this 17th day of May, 1986
 by Jim F. Loehr and Geraldine L. Loehr, husband and wife

My Appt. Exp. 10-19-89 Notary Public

We, the undersigned holders of a
 mortgage on the above described property do hereby
 consent to the plat of "LOEHR ADDITION" Wichita, Kansas.
 American Savings, a Federal Savings and Loan Association

State of Kansas }
 Sedgwick County } ss The foregoing instrument acknowledged
 before me this 23 day of July, 1986,
 by American Savings of American Savings,
 a Federal Savings and Loan Association on behalf
 of the Association.

My Appt. Exp. _____ Notary Public