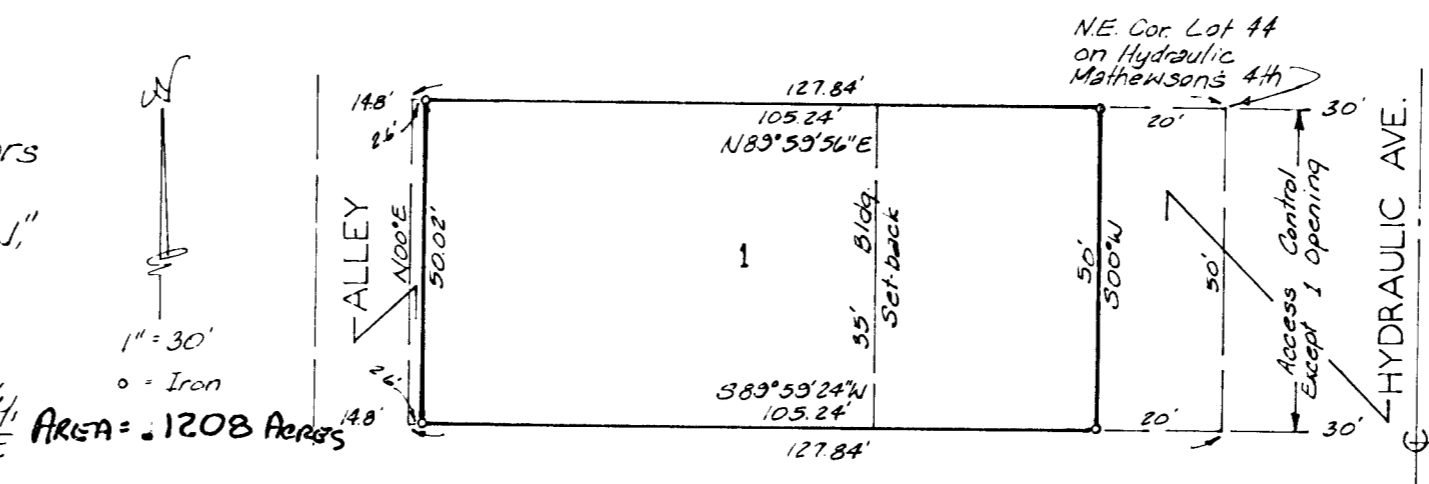


# RICHARD LOFFLAND ADDITION

WICHITA, KANSAS

State of Kansas }  
Sedwick County } S.S. We, Baughman Company, P.A., Surveyors  
in aforesaid county and state do hereby certify that we  
have surveyed and platted "RICHARD LOFFLAND ADDITION,"  
Wichita, Kansas, and that the accompanying plat is a  
true and correct exhibit of the property surveyed, de-  
scribed as and being a replat of Lot 44, on Hydraulic  
Ave., Mathewson's 4th Addition to Wichita, Sedwick County,  
Kansas. Being situated in the NE 1/4 Sec 21, Twp. 27-S, R-1-E  
of the 6th P.M., Sedwick County, Kansas.



12/9/1987  
Date

Baughman Company, P.A.

Colman F. Sullivan Surveyor  
Colman F. Sullivan

This plat of "RICHARD LOFFLAND  
ADDITION," Wichita, Kansas, has been submitted to and  
approved by the Wichita-Sedwick County Metropolitan  
Area Planning Commission, Wichita, Kansas.  
Dated this 11<sup>th</sup> day of June, 1987  
Wichita-Sedwick County Metropolitan Area Planning Commission

\_\_\_\_\_  
John Terry Moore Chairman

\_\_\_\_\_  
Marvin S. Krout Secretary

Know all men by these presents that  
we, the undersigned, have caused the land described in  
the surveyors certificate to be platted into a Lot, Street  
and Alley to be known as "RICHARD LOFFLAND ADDITION,"  
Wichita, Kansas. The Street and Alley are hereby dedicated  
to and for the use of the public. All abutters rights of  
access to or from Hydraulic Ave. over and across the  
east line of Lot 1, are hereby granted to the City of  
Wichita, provided however that Lot 1, shall have access  
to Hydraulic Ave. at one point, as shall be determined  
by the City Engineer of Wichita, Kansas.

This plat approved and all dedications  
shown hereon accepted by the City Council of the City of  
Wichita, Kansas, this \_\_\_\_\_ day of \_\_\_\_\_ 198\_\_

\_\_\_\_\_  
Robert G. Knight Mayor

\_\_\_\_\_  
Dale E. Rea Deputy City Clerk

State of Kansas }  
Sedwick County } S.S. The foregoing instrument acknowledged  
before me this \_\_\_\_\_ day of \_\_\_\_\_ 1987, by  
Richard A. Loffland and Dana Renee Loffland his wife.

Entered on transfer record this  
\_\_\_\_\_ day of \_\_\_\_\_ 198\_\_

\_\_\_\_\_  
Don Wright County Clerk

My Appt Exp 2/3/91  
Mildred E. Franz Notary Public  
Mildred E. Franz

State of Kansas }  
Sedwick County } S.S. This is to certify that this plat has  
been filed for record in the office of the Register of  
Deeds this \_\_\_\_\_ day of \_\_\_\_\_ 198\_\_,  
at \_\_\_\_\_ o'clock \_\_\_\_\_ M., and is duly recorded.

\_\_\_\_\_  
Pat Kettler Register of Deeds

\_\_\_\_\_  
Ed Resa Deputy