

PRELIMINARY PLAT

SAVANNA AT CASTLE ROCK RANCH 6TH ADDITION

OWNER/DEVELOPER:
 CASTLE ROCK RANCH, INC.
 14500 SPORT OF KINGS
 WICHITA, KANSAS 67230

ENGINEER:
 PROFESSIONAL ENGINEERING CONSULTANTS, P.A.
 303 S. TOPEKA
 WICHITA, KANSAS 67202

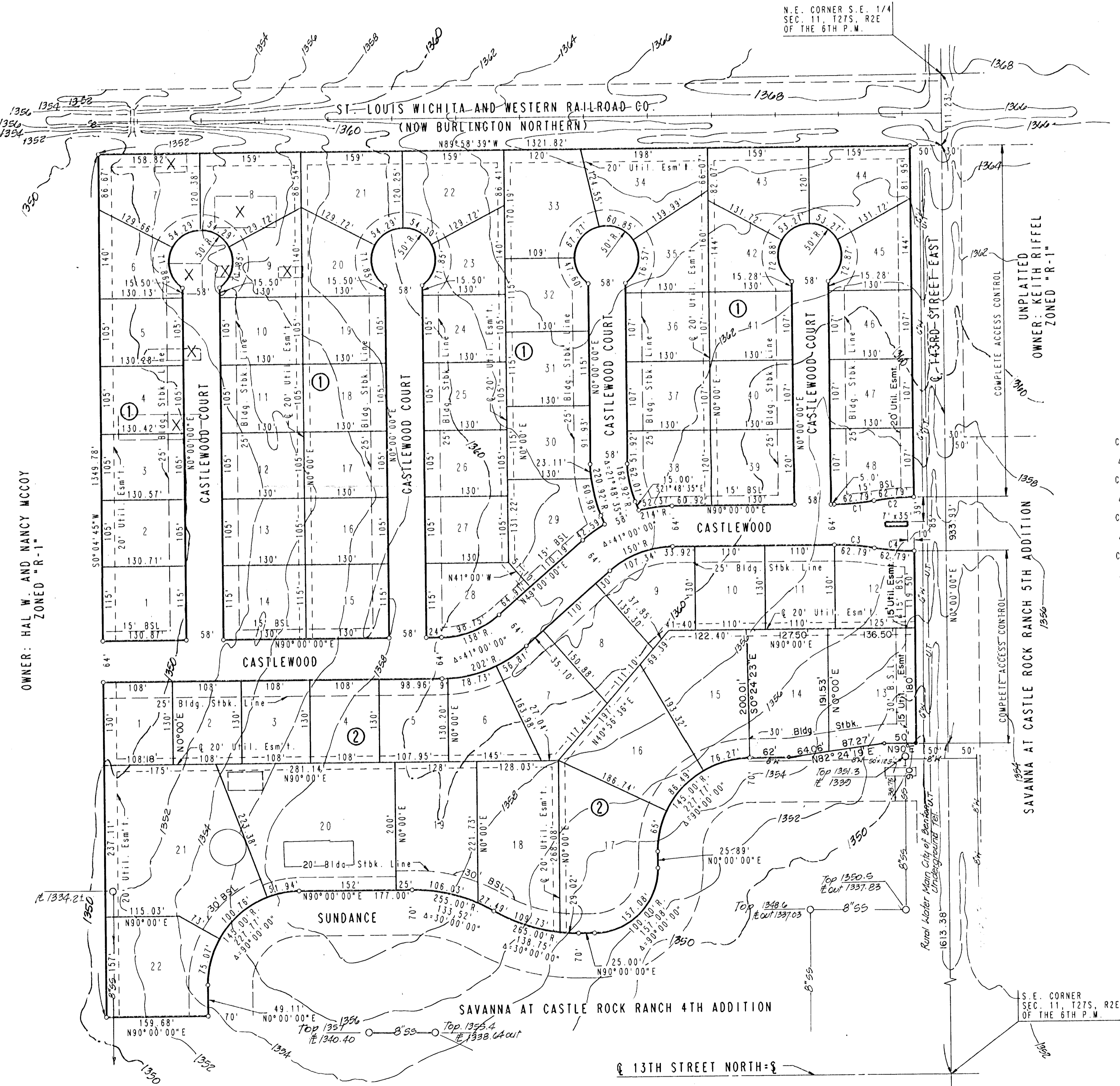


SCALE: 1"=100'
 4-11-94

BSL = BUILDING SETBACK LINE

B.M. - R.R. SPIKE IN H.L.P. 43' S.E. OF
 S.W. CORNER SEC. 12, T27S, R2E.
 ELEV. = 1352.87 M.S.L.
 ELEV. = 165.47 CITY DATUM

X = EXISTING BLDGS.
 TO BE REMOVED



OWNER: HAL W. AND NANCY MCCOY
 ZONED "R-1"

UNPLATTED
 OWNER: KEITH RIFFEL
 ZONED "R-1"

- CURVE NO. 1
 374.65' R.
 Δ=9°36'11"
- CURVE NO. 2
 374.65' R.
 Δ=9°36'11"
- CURVE NO. 3
 374.65' R.
 Δ=9°36'11"
- CURVE NO. 4
 374.65' R.
 Δ=9°36'11"

S.E. CORNER
 SEC. 11, T27S, R2E
 OF THE 6TH P.M.

Q 13TH STREET NORTH-S