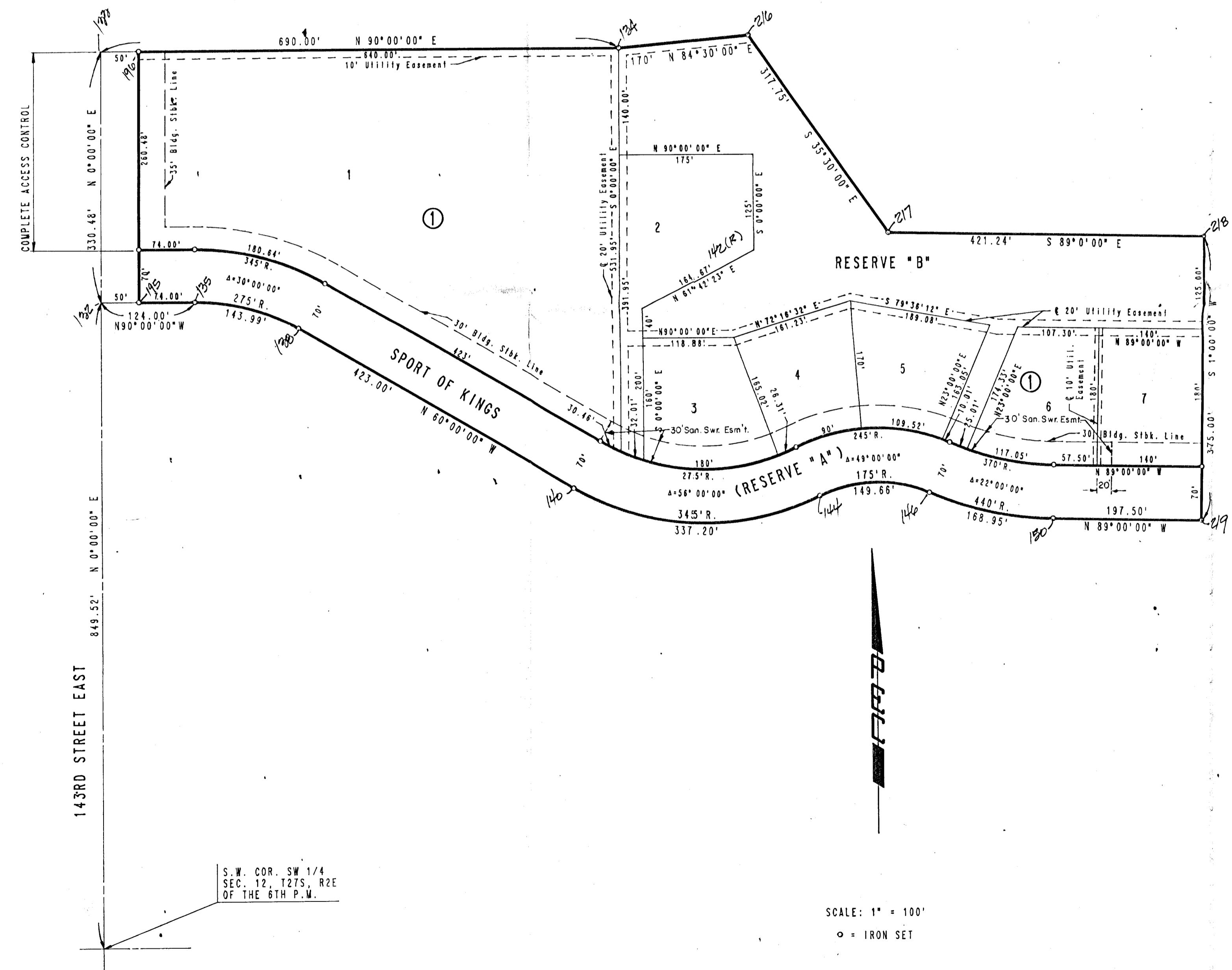


SAVANNA AT CASTLE ROCK RANCH 2ND ADDITION TO SEDGWICK COUNTY, KANSAS

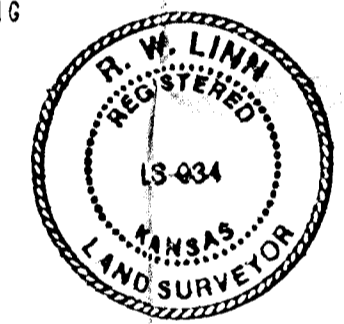


STATE OF KANSAS)
COUNTY OF SEDGWICK) SS

I, R. W. LINN, A REGISTERED LAND SURVEYOR IN AFORESAID STATE AND COUNTY, DO HEREBY CERTIFY THAT ON THIS 8th DAY OF May, 1988, I HAVE BEEN IN RESPONSIBLE CHARGE OF SURVEYING AND PLATTING OF SAVANNA AT CASTLE ROCK RANCH 2ND ADDITION TO SEDGWICK COUNTY, KANSAS, INTO LOTS, A BLOCK, A STREET AND RESERVES THE SAME BEING A COMPLETE REPEAT OF TERRA VUE, AN ADDITION TO SEDGWICK COUNTY, KANSAS TOGETHER WITH AN ADDITIONAL TRACT OF LAND IN THE SW 1/4 OF SECTION 12, T27S, R2E OF THE 6TH P.M.; THE TOTAL SITE DESCRIBED AS:

BEGINNING AT A POINT IN THE WEST LINE AND 849.52 FEET NORTH OF THE S.W. CORNER, SW 1/4 OF SECTION 12, TOWNSHIP 27 SOUTH, RANGE 2 EAST OF THE 6TH P.M.; THENCE BEARING N0°00'00"E ALONG THE WEST LINE OF SAID SW 1/4 A DISTANCE OF 330.48 FEET; THENCE BEARING N90°00'00"E A DISTANCE OF 690.00 FEET; THENCE BEARING N84°30'00"E A DISTANCE OF 170.00 FEET; THENCE BEARING S35°30'00"E A DISTANCE OF 317.75 FEET; THENCE BEARING S89°00'00"E A DISTANCE OF 421.24 FEET; THENCE BEARING S1°00'00"W A DISTANCE OF 375.00 FEET; THENCE BEARING N89°00'00"W A DISTANCE OF 197.50 FEET TO THE P.C. OF A CURVE TO THE RIGHT HAVING A RADIUS OF 440.00 FEET; THENCE ALONG SAID CURVE THROUGH A CENTRAL ANGLE OF 22°00'00" AN ARC DISTANCE OF 168.95 FEET TO THE P.R.C. OF A CURVE TO THE LEFT HAVING A RADIUS OF 175.00 FEET; THENCE ALONG SAID CURVE THROUGH A CENTRAL ANGLE OF 49°00'00" AN ARC DISTANCE OF 149.66 FEET TO THE P.R.C. OF A CURVE TO THE RIGHT HAVING A RADIUS OF 345.00 FEET; THENCE ALONG SAID CURVE THROUGH A CENTRAL ANGLE OF 56°00'00" AN ARC DISTANCE OF 337.20 FEET; THENCE BEARING N60°00'00"W A DISTANCE OF 423.00 FEET TO THE P.C. OF A CURVE TO THE LEFT HAVING A RADIUS OF 275.00 FEET; THENCE ALONG SAID CURVE THROUGH A CENTRAL ANGLE OF 30°00'00" AN ARC DISTANCE OF 143.93 FEET; THENCE BEARING N90°00'00"W A DISTANCE OF 124.00 FEET TO THE POINT OF BEGINNING, CONTAINING 14.83 ACRES MORE OR LESS.

R. W. Linn
R. W. LINN
P.E. #3684, R.L.S. #934
PROFESSIONAL ENGINEERING CONSULTANTS, P.A.



KNOW ALL MEN BY THESE PRESENTS THAT WE, THE UNDERSIGNED PROPERTY OWNERS OF THE LAND, AS ABOVE SET FORTH IN THE ENGINEER'S CERTIFICATE, HAVE CAUSED THE LAND TO BE SURVEYED AND PLATTED INTO LOTS, A BLOCK, A STREET AND RESERVES, THE SAME TO BE KNOWN AS SAVANNA AT CASTLE ROCK RANCH 2ND ADDITION TO SEDGWICK COUNTY, KANSAS, AS INDICATED FOR THE CONSTRUCTION AND MAINTENANCE OF PUBLIC UTILITIES, AND DRAINAGE ARE HEREBY GRANTED. THE STREET IS HEREBY DEDICATED TO AND FOR THE USE OF THE PUBLIC.

RESERVE A IS HEREBY PLATTED FOR PRIVATE STREET, DRAINAGE AND UTILITIES. RESERVE B IS HEREBY PLATTED FOR PEDESTRIAN IMPROVEMENTS, LANDSCAPING, EQUESTRIAN TRAILS, DRAINAGE AND UTILITIES CONFINED WITHIN EASEMENTS.

RESERVES A AND B SHALL BE SUBJECT TO THE RESTRICTIVE COVENANTS ESTABLISHED BY THE DECLARATION OF OWNER'S ASSOCIATION AGREEMENTS AND SHALL BE OWNED AND MAINTAINED BY ONE OR MORE ASSOCIATIONS TO BE FORMED WITH SAVANNA AT CASTLE ROCK RANCH 2ND ADDITION. MINIMUM PAD ELEVATION FOR LOTS 1 THROUGH 7 IN BLOCK ONE (1) SHALL BE M.S.L. + CITY DATUM

ALL ADJUTERS' RIGHT OF ACCESS TO AND FROM 143RD STREET EAST OVER AND ACROSS THE WEST LINE OF LOT 1 IN BLOCK 1 ARE HEREBY GRANTED TO THE APPROPRIATE GOVERNING BODY.

ALL PORTIONS OF TERRA VUE ADDITION TO SEDGWICK COUNTY, KANSAS ARE HEREBY VACATED AND REPLATTED BY VIRTUE OF K.S.A. 12-512 (B) AMENDED.

OWNERS: THE KYLE MARTIN STEPHENSON TRUST AND THE LINDA LUCILE STEPHENSON TRUST

BY *Natalie Stephenson* TRUSTEE
NATALIE STEPHENSON

STATE OF KANSAS)
COUNTY OF SEDGWICK) SS

BE IT REMEMBERED THAT ON THIS 8th DAY OF May, 1988, BEFORE ME, A NOTARY PUBLIC IN AFORESAID STATE AND COUNTY, CAME NATALIE STEPHENSON, TRUSTEE OF THE KYLE MARTIN STEPHENSON TRUST AND THE LINDA LUCILE STEPHENSON TRUST TO ME PERSONALLY KNOWN TO BE THE SAME PERSON WHO EXECUTED THE FOREGOING INSTRUMENT OF WRITING AND DULY ACKNOWLEDGED THE EXECUTION OF SAME FOR AND ON BEHALF AND AS THE VOLUNTARY ACT AND DEED OF SAID TRUSTS. IN TESTIMONY WHEREOF I HAVE HERETO SET MY HAND AND AFFIXED MY NOTARIAL SEAL THE DAY AND YEAR ABOVE WRITTEN.



Charlene A. Stilwell, NOTARY PUBLIC

MY COMMISSION EXPIRES 11/30/91

WE, THE FIRST NATIONAL BANK IN WICHITA, KANSAS, HOLDER OF A MORTGAGE ON PART OF THE ABOVE DESCRIBED PROPERTY, DO HEREBY CONSENT TO THE PLATTING OF SAVANNA AT CASTLE ROCK RANCH 2ND ADDITION, SEDGWICK COUNTY, KANSAS.

BY *Gail A. Johnson*, VICE PRESIDENT
GAIL A. JOHNSON

STATE OF KANSAS)
COUNTY OF SEDGWICK) SS

BE IT REMEMBERED THAT ON THIS _____ DAY OF _____, 1988, BEFORE ME, A NOTARY PUBLIC IN AFORESAID STATE AND COUNTY, CAME _____ OF THE FIRST NATIONAL BANK IN WICHITA, KANSAS, TO ME PERSONALLY KNOWN TO BE THE SAME PERSON WHO EXECUTED THE FOREGOING INSTRUMENT OF WRITING AND DULY ACKNOWLEDGED THE EXECUTION OF SAME FOR AND ON BEHALF AND AS THE VOLUNTARY ACT AND DEED OF SAID BANK. IN TESTIMONY WHEREOF I HAVE HERETO SET MY HAND AND AFFIXED MY NOTARIAL SEAL THE DAY AND YEAR ABOVE WRITTEN.

_____, NOTARY PUBLIC

MY APPOINTMENT EXPIRES _____

THIS PLAT HAS BEEN SUBMITTED TO AND APPROVED BY THE WICHITA-SEGWICK COUNTY METROPOLITAN AREA PLANNING COMMISSION, WICHITA, KANSAS, DATED THIS _____ DAY OF _____, 1988.

_____, CHAIRMAN
ELTON PARSONS

_____, SECRETARY
WARVIN S. KROUT

THIS PLAT APPROVED AND ALL DEDICATIONS SHOWN HEREON ARE ACCEPTED BY THE CITY COUNCIL OF THE CITY OF WICHITA, KANSAS, DATED THIS _____ DAY OF _____, 1988.

_____, MAYOR
SHELDON KAMEN

_____, DEPUTY CITY CLERK
DALE E. REA

THIS PLAT APPROVED AND ALL DEDICATIONS SHOWN HEREON, IF ANY, ACCEPTED BY THE BOARD OF COUNTY COMMISSIONERS OF SEDGWICK COUNTY, KANSAS, THIS _____ DAY OF _____, 1988.

_____, CHAIRMAN
MARK F. SCHROEDER

_____, PRO-TEM CHAIRMAN
BILLY Q. MCCRAY

_____, COMMISSIONER
DAVID BAYOUTH

_____, COMMISSIONER
TOM SCOTT

_____, COMMISSIONER
BERNARD A. HENTZEN

ATTEST

_____, COUNTY CLERK
DON WRIGHT

ENTERED ON TRANSFER RECORD, THIS _____ DAY OF _____, 1988.

_____, COUNTY CLERK
DON WRIGHT

THIS IS TO CERTIFY THAT THIS INSTRUMENT WAS FILED FOR RECORD IN THE REGISTER OF DEEDS OFFICE AT _____, MO., ON THIS _____ DAY OF _____, 1988.

_____, REGISTER OF DEEDS
PAT KETTLER

_____, DEPUTY
ED RESA

B.M. - RR SPIKE IN H.L.P. 43' SE OF SW COR. SEC. 12, T27S, R2E
ELEV. -1152.87 M.S.L.
ELEV. -165.47 CITY DATUM