

DRAINAGE PLAN DATE 8-3-92

SAVANNA AT CASTLE ROCK RANCH 3RD ADDITION

DEVELOPER

SAVANNA, INC.
14010 E, 13TH STREET NORTH
WICHITA, KANSAS 67230

ENGINEER

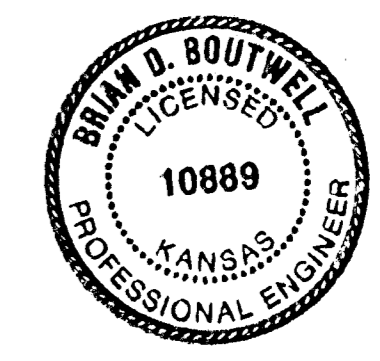
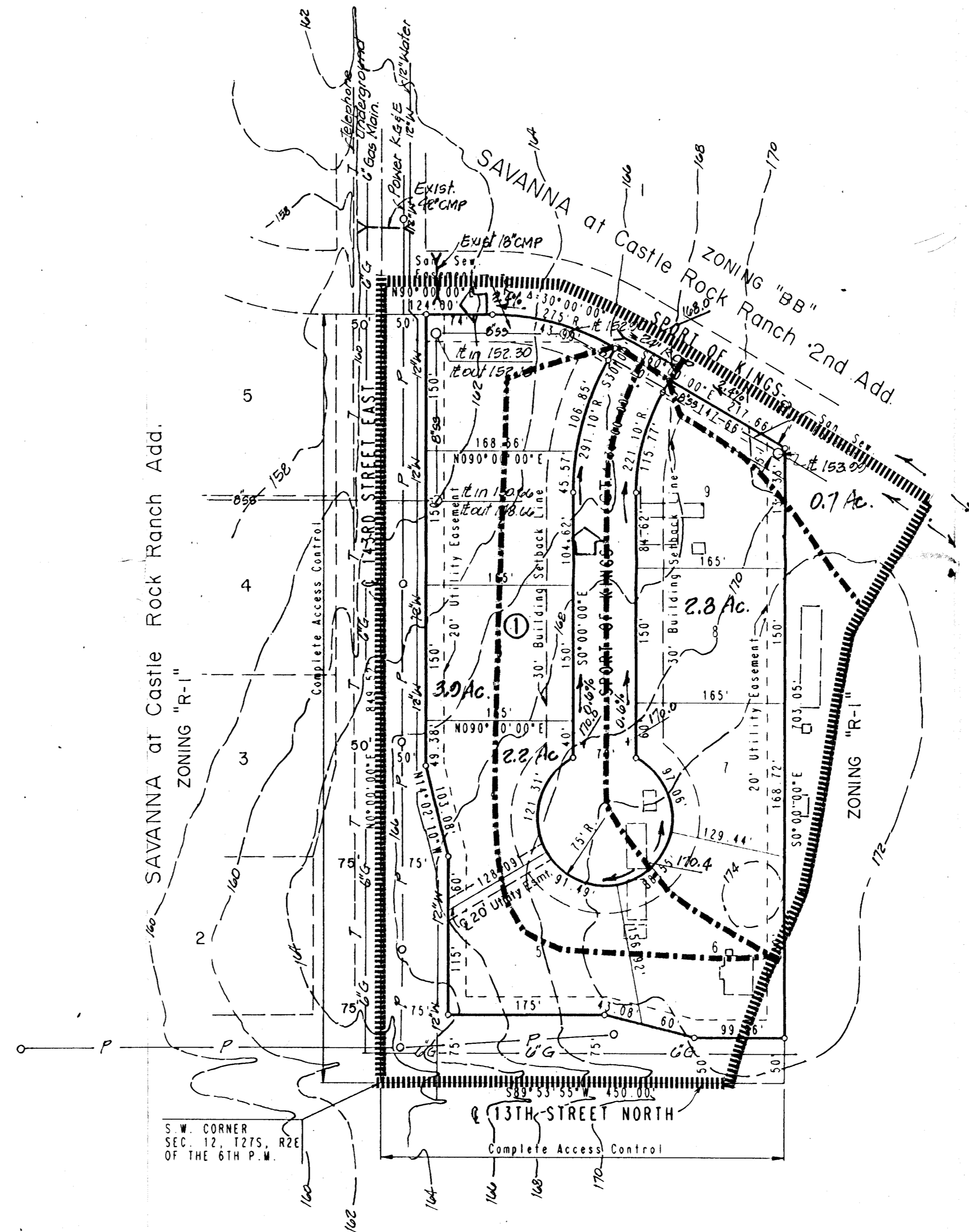
PROFESSIONAL ENGINEERING CONSULTANTS, P.A.
303 S. TOPEKA
WICHITA, KANSAS 67202



SCALE: 1"=100'
B.M. R.R. SPIKE IN L.P. 43' S.E. OF
S.W. COR. SEC. 12, T27S, R2E.
ELEV. 1352.87 M.S.L.
ELEV. 165.47 CITY DATUM
TOPO. 1988
DATE AUG. 3, 1992.

LEGEND

- Drainage Basin Boundary
- Drainage Sub-Basin Boundary
- Drainage Direction - Minor Storm
- Drainage Direction - Major Storm
- Estimated Future Top Curb Elev.



JUL 31 1992