

# STEVE KELLEY 4TH ADDITION

## WICHITA, SEDGWICK COUNTY, KANSAS

State of Kansas) SS We, Baughman Company, P.A., Surveyors in  
Sedgwick County) and State do hereby certify that we have surveyed  
and plotted "STEVE KELLEY 4TH ADDITION", to Wichita, Sedgwick County,  
Kansas and that the accompanying plat is a true and correct exhibit  
of the property surveyed, described as and being a replat of the South  
168' of the East 270' of Lot 11, together with the North 132' of the  
East 270' of Lot 12, R.A. Morris Tracts Addition, Sedgwick County, Kansas.

All being situated in the NW1/4 of Sec. 14, Twp. 27-S,  
R-1-E of the 6th P.M., Sedgwick County, Kansas.

Baughman Company, P.A.

Gregory F. Severns  
Surveyor

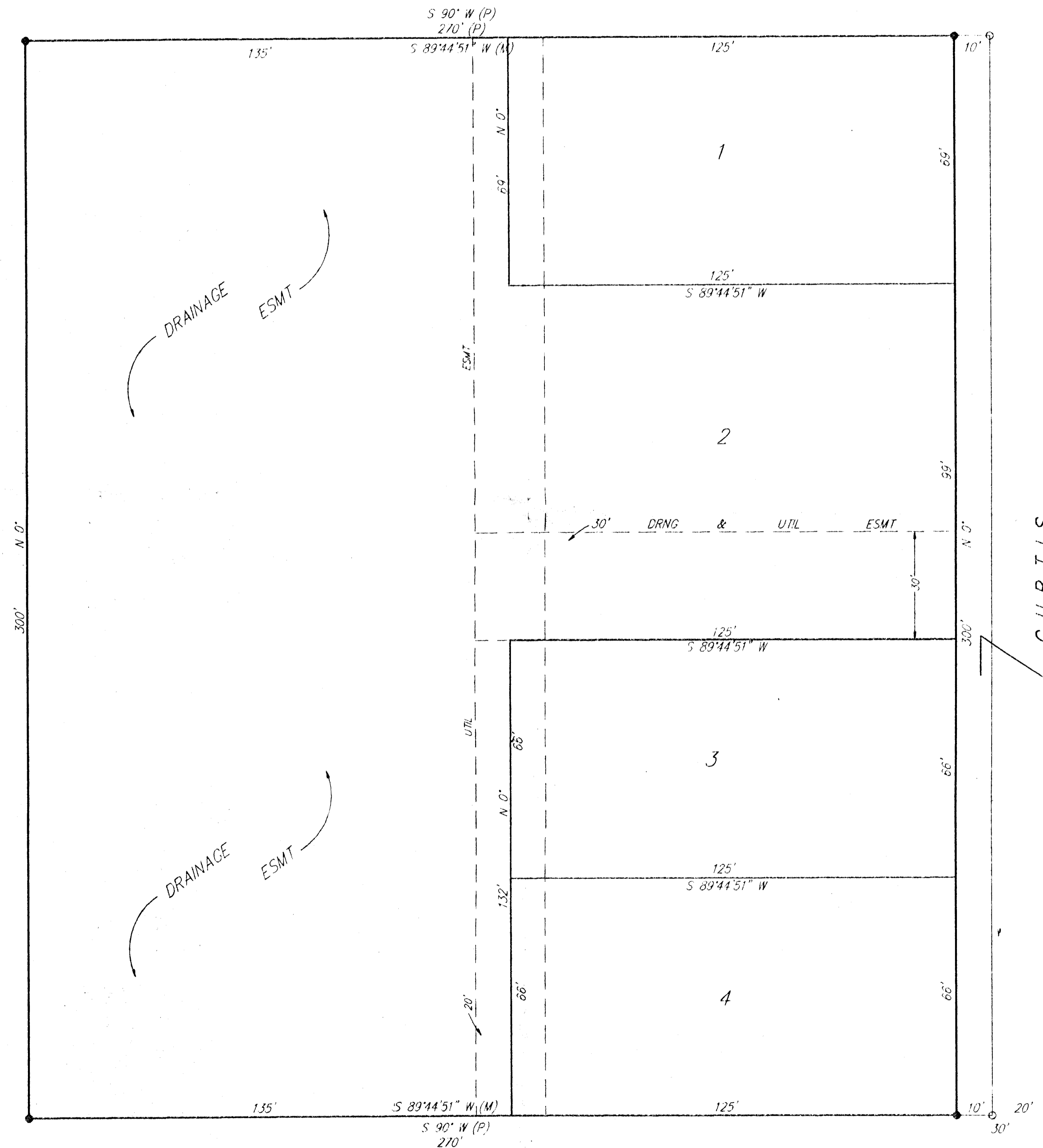
This plat of "STEVE KELLEY 4TH ADDITION",  
to Wichita, Sedgwick County, Kansas has been submitted to and  
approved by the Wichita-Sedgwick County Metropolitan Area Planning  
Commission, Wichita, Kansas.  
Dated this \_\_\_\_\_ day of \_\_\_\_\_, 1994.  
Wichita-Sedgwick County Metropolitan Area Planning Commission

James D. Miner  
Chairman

Marvin S. Krout  
Secretary



SCALE:  
1" = 20'  
● = Rebar



Know all men by these presents that we,  
the undersigned, have caused the land in the surveyors certificate to  
be platted into Lots and a Street to be known as "STEVE KELLEY 4TH  
ADDITION", Wichita, Sedgwick County, Kansas. The utility easements  
are hereby granted as indicated for the construction and maintenance  
of all public utilities. The drainage easements are hereby granted for  
drainage purposes. The drainage and utility easements are hereby  
granted as indicated for drainage purposes and for the construction  
and maintenance of all public utilities. The streets are hereby  
dedicated to and for the use of the public.

This plat approved and all dedications  
shown hereon accepted by the City Council of the City of Wichita,  
Kansas, this \_\_\_\_\_ day of \_\_\_\_\_, 1994.

Elma Broadfoot  
Mayor

Pat Burnett  
City Clerk

Stephen R. Kelley

Etta V. Kelley

Entered on transfer record this \_\_\_\_\_ day  
of \_\_\_\_\_, 1994.

Susan E. Crockett-Spoon  
County Clerk

State of Kansas) SS The foregoing instrument acknowledged be-  
fore me, this \_\_\_\_\_ day of \_\_\_\_\_, 1994, by Stephen R. Kelley  
and Etta V. Kelley, husband and wife.

Notary Public

My App't. Exp. \_\_\_\_\_

State of Kansas) SS This is to certify that this plat has been  
Sedgwick County) filed for record in the office of the Register of Deeds, this \_\_\_\_\_ day  
of \_\_\_\_\_, 1994, at \_\_\_\_\_ o'clock \_\_\_\_\_ M., and is duly recorded.

Pat Kettler  
Register of Deeds

Ed Resa  
Deputy