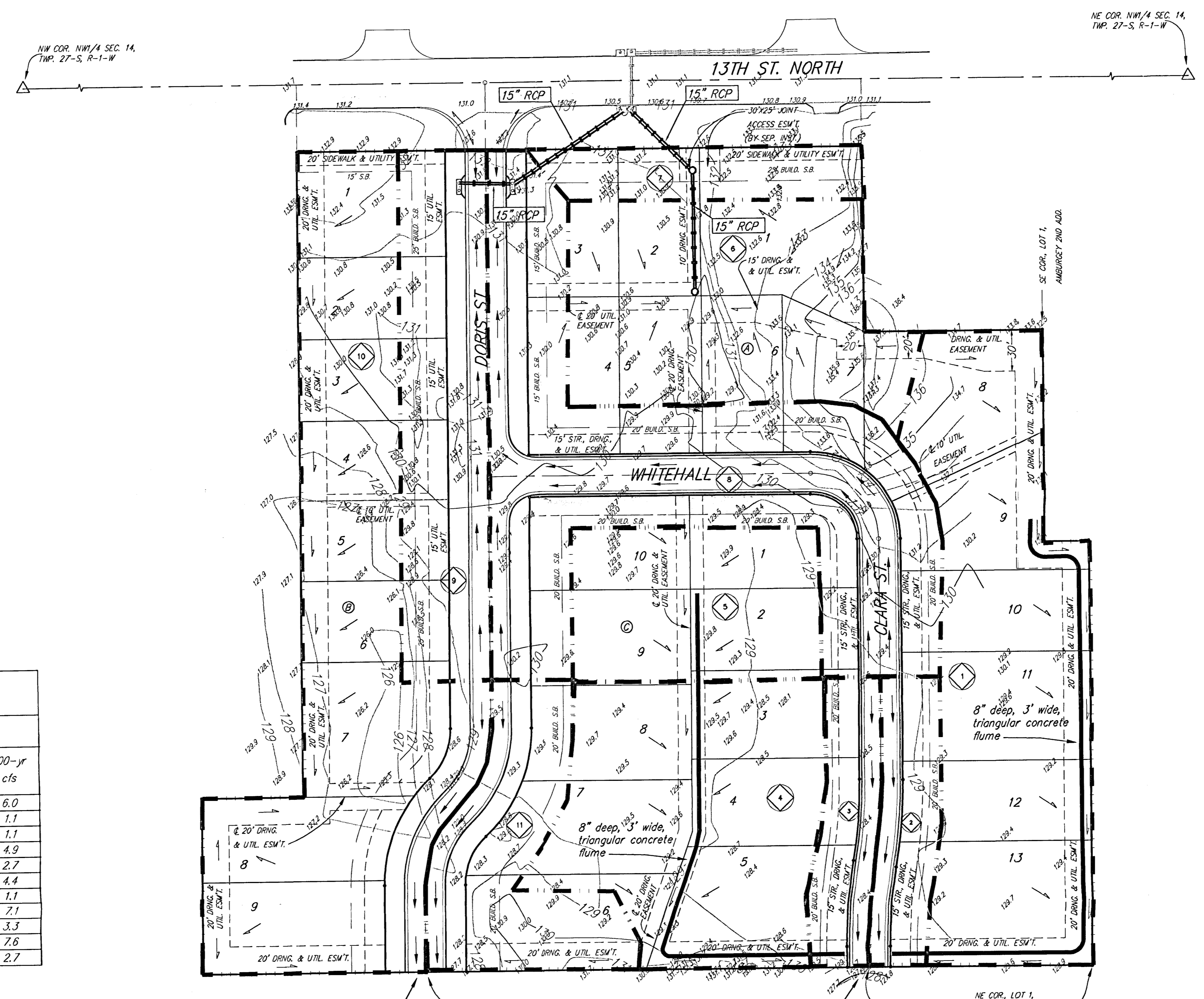


- LEGEND
- = #4 REBAR W/ "BAUGHMAN" CAP (SET)
  - △ = SECTION CORNER
  - = AREA INLET
  - ▭ = CATCH BASIN
  - = DRAINAGE PIPE
  - = CONCRETE DRAINAGE FLUME
  - ⊕ = DRAINAGE AREA IDENTIFIER
  - = WATERSHED BOUNDARY



STEVE KELLEY 5TH ADDITION: STORMWATER FLOWS

BASIN ID #	BASIN AREA (acres)	Time of Concentration (15 minute minimum)	RUNOFF COEFFICIENTS			PEAK FLOWRATE		
			2-yr C	5-yr C	100-yr C	2-yr cfs	5-yr cfs	100-yr cfs
1	1.1	15	0.48	0.52	0.74	2.0	2.6	6.0
2	0.2	15	0.48	0.52	0.74	0.4	0.5	1.1
3	0.2	15	0.48	0.52	0.74	0.4	0.5	1.1
4	0.9	15	0.48	0.52	0.74	1.7	2.1	4.9
5	0.5	15	0.48	0.52	0.74	0.9	1.2	2.7
6	0.8	15	0.48	0.52	0.74	1.5	1.9	4.4
7	0.2	15	0.48	0.52	0.74	0.4	0.5	1.1
8	1.3	15	0.48	0.52	0.74	2.4	3.1	7.1
9	0.6	15	0.48	0.52	0.74	1.1	1.4	3.3
10	1.4	15	0.48	0.52	0.74	2.6	3.3	7.6
11	0.5	15	0.48	0.52	0.74	0.9	1.2	2.7

Flow will be directed in paved channel (@ 0.32% slope) to existing street curb & gutter flow approximately 330 feet to the south.

New road will tie into existing road at the property line. Flow will be directed to existing curb & gutter system.

NOTE: Add 100 to finish grade elevations indicated to achieve city datum elevation. Existing grade elevations are in city datum.



STEVE KELLEY 5TH ADDITION  
**DRAINAGE PLAN**  
 CITY OF WICHITA, KANSAS

**BAUGHMAN COMPANY P.A.**  
 ENGINEERING, SURVEYING, & PLANNING  
 318-262-7271 • 315 ELLIS • WICHITA, KANSAS 67211

PROJECT NUMBER: **1**

DESIGN JUD	DRAWN JUD	APPROVED	DATE 10/03	SCALE Noted
---------------	--------------	----------	---------------	----------------