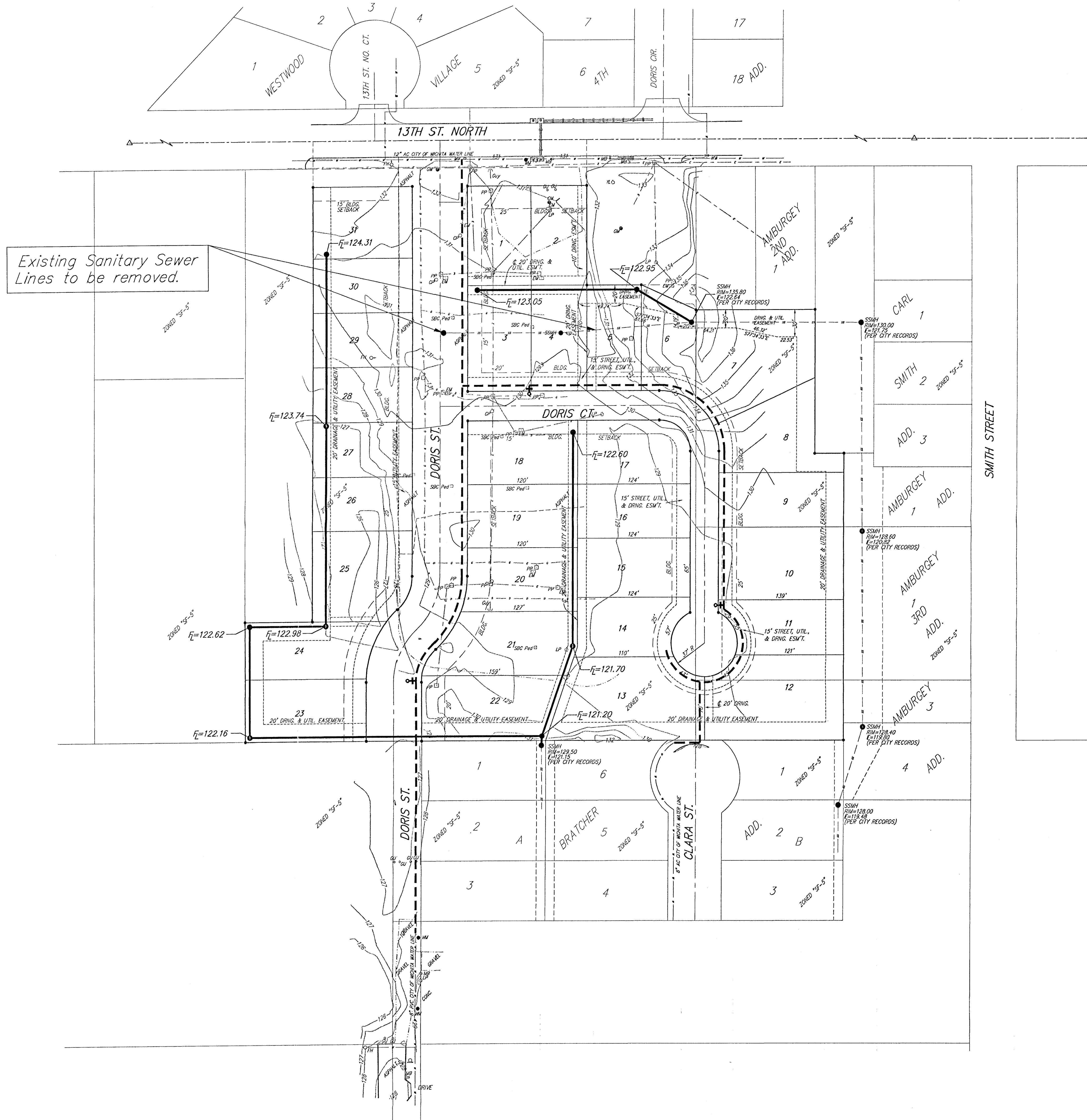


UTILITY CONCEPT
STEVE KELLEY 5TH ADDITION
 WICHITA, SEDGWICK COUNTY, KANSAS



Existing Sanitary Sewer Lines to be removed.

- 0 50 100
- DATE OF PREPARATION: JULY 02, 2003
 DATE OF TOPOGRAPHY: JUNE 27, 2003
 CONTOUR INTERVALS = 1'00"
- CB = Catch Basin
 - CP = Catcher Pedestal
 - EB = Electric Box
 - FH = Fire Hydrant
 - GM = Gas Meter
 - GP = Guard Post (Ballard)
 - GA = Guy Anchor
 - LP = Light Pole
 - MB = Mail Box
 - EM = Electric Meter
 - YL = Yard Light
 - PP = Power Pole
 - SSMH = Sanitary Sewer Manhole
 - SBC Ped = Southwestern Bell Pedestal
 - WM = Water Meter
 - WV = Water Valve
 - T = Tree
 - Sign = Sign
- = #4 REBAR W/ "BAUGHMAN" CAP (FOUND)
 - = #4 REBAR W/ "BAUGHMAN" CAP (SET)
 - = #4 REBAR W/ "TILTS" CAP (FOUND)
 - ⊗ = 1" IRON (FOUND)
 - ⊙ = 1/2" IRON (FOUND)
 - ⊕ = P-N NAIL & SHINER IN STUMP (FOUND)
 - ⊠ = SECTION CORNER
 - ⊙ = RAILROAD SPIKE (FOUND)
 - ⊗ = #4 REBAR (FOUND)

LEGEND

- Proposed Water Line
(8" Unless Noted Otherwise)
- Proposed Sanitary Sewer Line
(8" Unless Noted Otherwise)
- Proposed Sanitary Sewer Manhole
- ♀ Proposed Fire Hydrant
- XXX.XX Proposed Flow