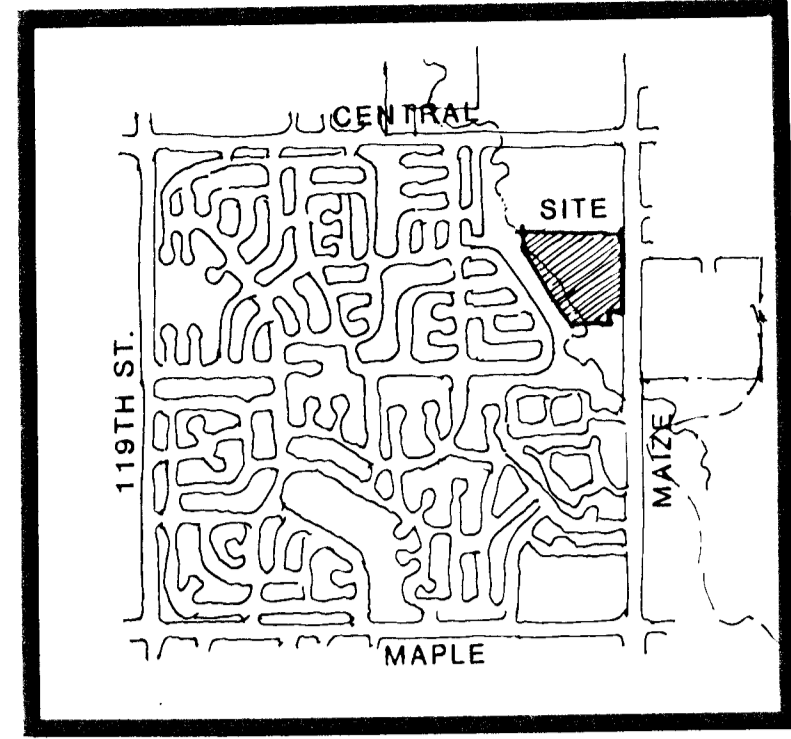
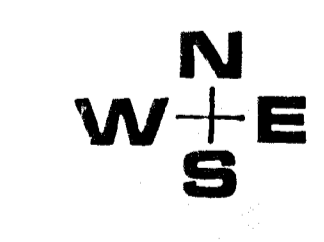
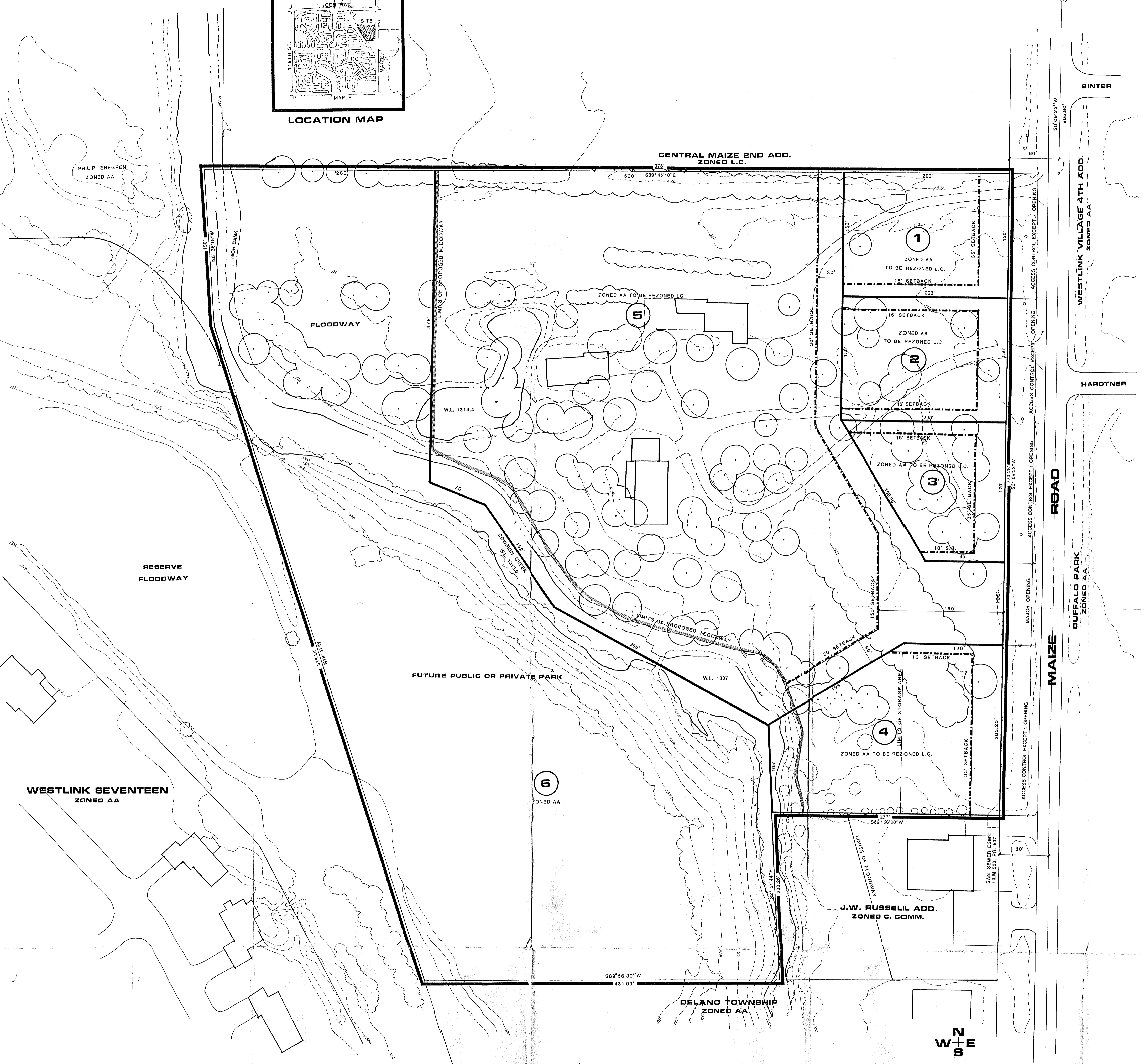


GENERAL PROVISIONS

N.E. COR. N.E. 1/4 SEC. 19, T27S, R1W



LOCATION MAP

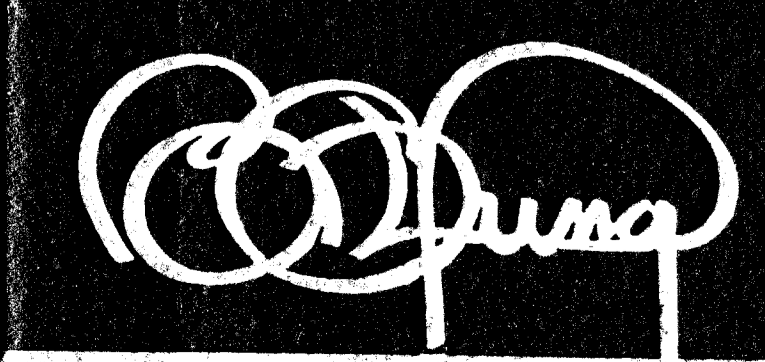
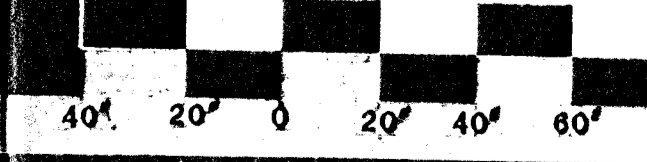


SCALE: 1"=40'

COMMUNITY UNIT PLAN
LIBERTY PLAZA

OWNER: J.W. RUSSELL 443 N. MAIZE ROAD, WICHITA, KANSAS 67212 PH. 722-2417

REV. JULY 23, 1998 DATE: JUNE 17, 1998



BILL G. YUNG DESIGN
4912 E. 29TH STREET NORTH WICHITA, KS 67220 316-683-5567